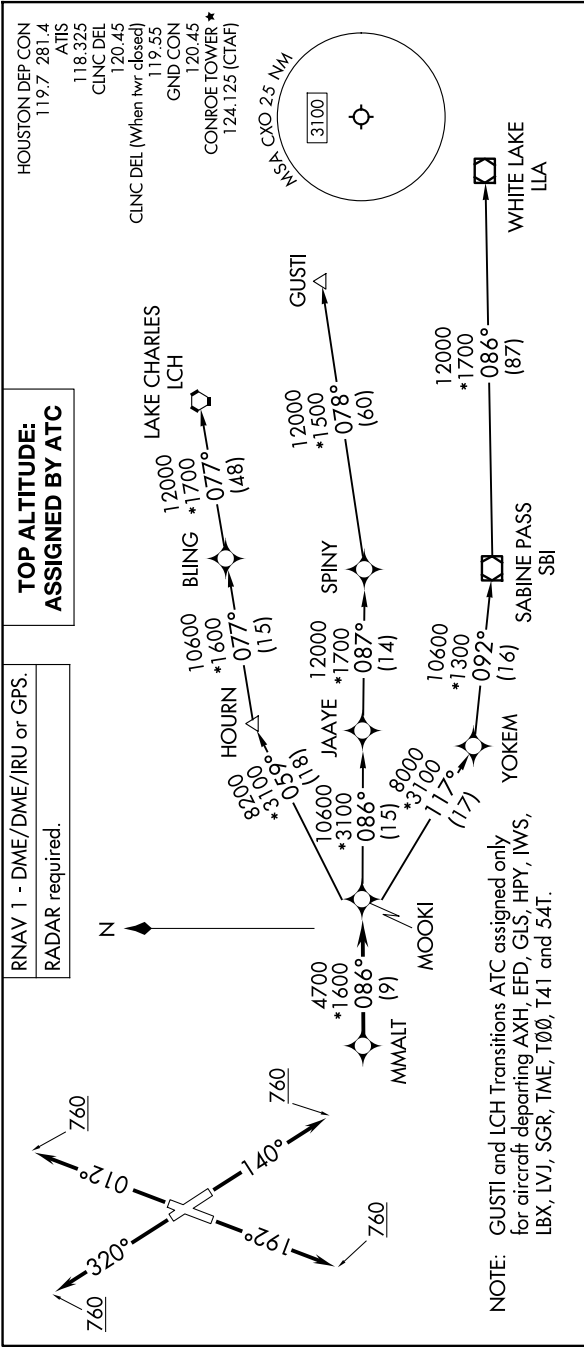


# MMALT SEVEN DEPARTURE (RNAV)

HOUSTON, TEXAS

SC-5, 20 FEB 2025 to 20 MAR 2025



HOUSTON DEP CON  
119.7 281.4  
ATIS  
118.325  
CINC DEL  
120.45  
CINC DEL (When twr closed)  
119.55  
GND CON  
120.45  
CONROE TOWER\*  
124.125 (CTAF)

**TOP ALTITUDE:  
ASSIGNED BY ATC**

RNAV 1 - DME/DME/IRU or GPS.  
RADAR required.

### DEPARTURE ROUTE DESCRIPTION

**TAKEOFF RUNWAY 1:** Climb on heading 012° to 760, for RADAR vectors to MMALT, thence. . . .  
**TAKEOFF RUNWAY 14:** Climb on heading 140° to 760, for RADAR vectors to MMALT, thence. . . .  
**TAKEOFF RUNWAY 19:** Climb on heading 192° to 760, for RADAR vectors to MMALT, thence. . . .  
**TAKEOFF RUNWAY 32:** Climb on heading 320° to 760, for RADAR vectors to MMALT, thence. . . .

. . . on track 086° to MOOKI, then on (transition). Maintain ATC assigned altitude.  
 Expect filed altitude 10 minutes after departure.

GUSTI TRANSITION (MMALT7.GUSTI)  
LAKE CHARLES TRANSITION (MMALT7.LCH)  
WHITE LAKE TRANSITION (MMALT7.LLA)

**TAKEOFF MINIMUMS**  
 Rwys 1, 14, 19, 32: Standard with  
 minimum climb of 500'/NM to 760.

NOTE: Chart not to scale.

# MMALT SEVEN DEPARTURE (RNAV)

SC-5, 20 FEB 2025 to 20 MAR 2025