

WAAS CH 86719	APP CRS 012°	Rwy Idg TDZE Apt Elev	5000 237 245
W01A			

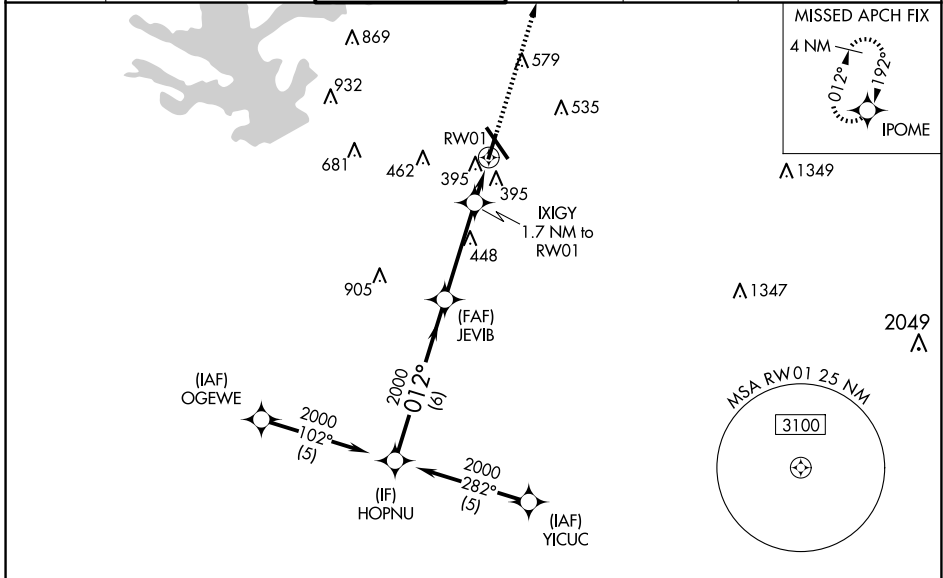
RNAV (GPS) RWY 1

CONROE/NORTH HOUSTON RGNL (C̄X̄O)

⚠ For uncompensated Baro-VNAV systems, LNAV/VNAV NA below -15°C (5°F) or above 48°C (118°F). DME/DME RNP-0.3 NA. Rwy 1 helicopter visibility reduction below ¾ SM NA.

MISSED APPROACH: Climb to 2000 direct IPOME and hold.

ATIS 118.325	HOUSTON APP CON 119.7 281.4	CONROE TOWER ★ 124.125 (CTAF) 0	GND CON 120.45	CLNC DEL 120.45	CLNC DEL 119.55 (When twr closed)
------------------------	---------------------------------------	-------------------------------------------	--------------------------	---------------------------	------------------------------------------------



SC-5, 20 FEB 2025 to 20 MAR 2025

SC-5, 20 FEB 2025 to 20 MAR 2025

ELEV	245	D	TDZE	237
------	-----	----------	------	-----

	HOPNU	JEVIB	IXIGY	RWY 1
	2000	2000	1.7 NM to RWY 1	
	012°			
	GP 3.00°			
	TCH 49			
	6 NM	3.6 NM	1.7 NM	
CATEGORY	A	B	C	D
LPV DA		521-1	284 (300-1)	
LNAV/VNAV DA		651-1½	414 (500-1½)	
LNAV MDA	660-1	423 (500-1)	660-1¼	423 (500-1¼)
C CIRCLING	700-1	455 (500-1)	880-1¾	960-2¼
			635 (700-1¾)	715 (800-2¼)

