

WAAS CH 62819 W32A	APP CRS 321°	Rwy Idg TDZE Apt Elev	7501 245 245
--	------------------------	-----------------------------	---

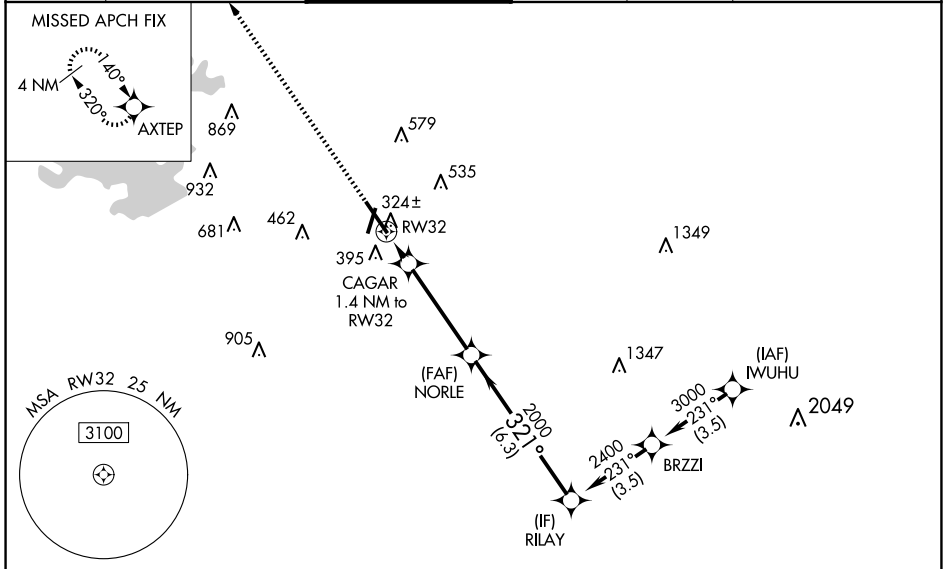
RNAV (GPS) RWY 32

CONROE/NORTH HOUSTON RGNL (CXXO)

▼ For uncompensated Baro-VNAV systems, LNAV/VNAV NA below -6°C (-22°F) or above 54°C (130°F). DME/DME RNP-0,3 NA.
▲ Rwy 32 helicopter visibility reduction below ¾ SM NA.

MISSED APPROACH: Climb to 2100 direct AXTEP and hold.

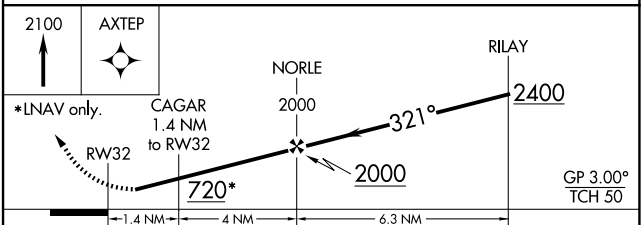
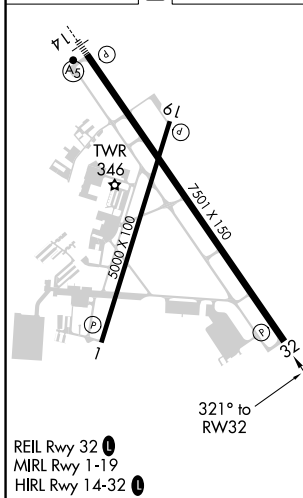
ATIS 118.325	HOUSTON APP CON 119.7 281.4	CONROE TOWER * 124.125 (CTAF) 0	GND CON 120.45	CLNC DEL 120.45	CLNC DEL 119.55 (When twr closed)
------------------------	---------------------------------------	---	--------------------------	---------------------------	--



SC-5, 20 FEB 2025 to 20 MAR 2025

SC-5, 20 FEB 2025 to 20 MAR 2025

ELEV 245	D	TDZE 245
----------	----------	----------



CATEGORY	A	B	C	D
LPV DA		495-¾	250 (300-¾)	
LNAV/VNAV DA		505-⅞	260 (300-⅞)	
LNAV MDA		580-1	335 (400-1)	
C CIRCLING	700-1	455 (500-1)	880-1¾ 635 (700-1¾)	960-2¼ 715 (800-2¼)