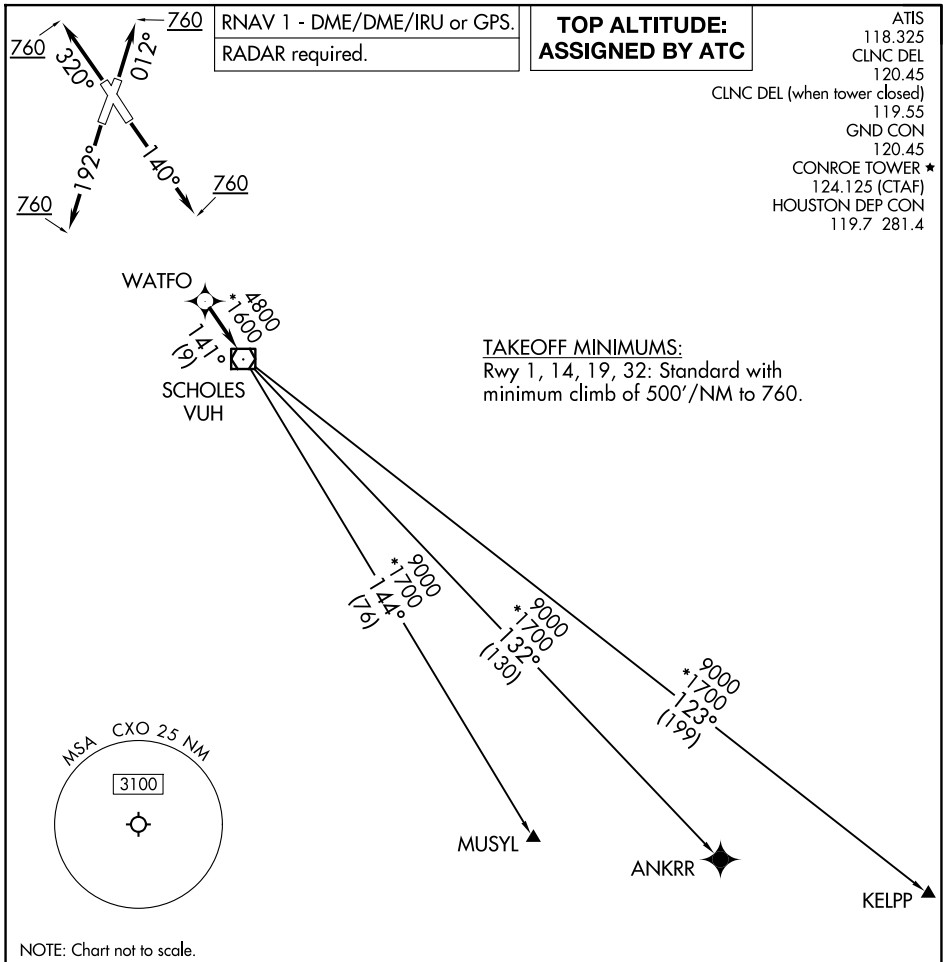


WATFO SIX DEPARTURE (RNAV)



RNAV 1 - DME/DME/IRU or GPS.
RADAR required.

**TOP ALTITUDE:
ASSIGNED BY ATC**

ATIS
118.325
CLNC DEL
120.45
CLNC DEL (when tower closed)
119.55
GND CON
120.45
CONROE TOWER ★
124.125 (CTAF)
HOUSTON DEP CON
119.7 281.4

TAKEOFF MINIMUMS:
Rwy 1, 14, 19, 32: Standard with
minimum climb of 500'/NM to 760.

NOTE: Chart not to scale.

DEPARTURE ROUTE DESCRIPTION

TAKEOFF RUNWAY 1: Climb on heading 012° to 760, for RADAR vectors to WATFO, thence. . . .
TAKEOFF RUNWAY 14: Climb on heading 140° to 760, for RADAR vectors to WATFO, thence. . . .
TAKEOFF RUNWAY 19: Climb on heading 192° to 760, for RADAR vectors to WATFO, thence. . . .
TAKEOFF RUNWAY 32: Climb on heading 320° to 760, for RADAR vectors to WATFO, thence. . . .
 . . . on track 141° to VUH VOR/DME, then on (transition). Maintain ATC assigned altitude.
 Expect filed altitude 10 minutes after departure.

ANKRR TRANSITION (WATFO6.ANKRR)
KELPP TRANSITION (WATFO6.KELPP)
MUSYL TRANSITION (WATFO6.MUSYL)

SC-5, 20 FEB 2025 to 20 MAR 2025

SC-5, 20 FEB 2025 to 20 MAR 2025