

WAAS CH 48816 W26A	APP CRS 257°	Rwy Idg TDZE Apt Elev	5205 2586 2591
--	------------------------	-----------------------------	---

RNAV (GPS) RWY 26

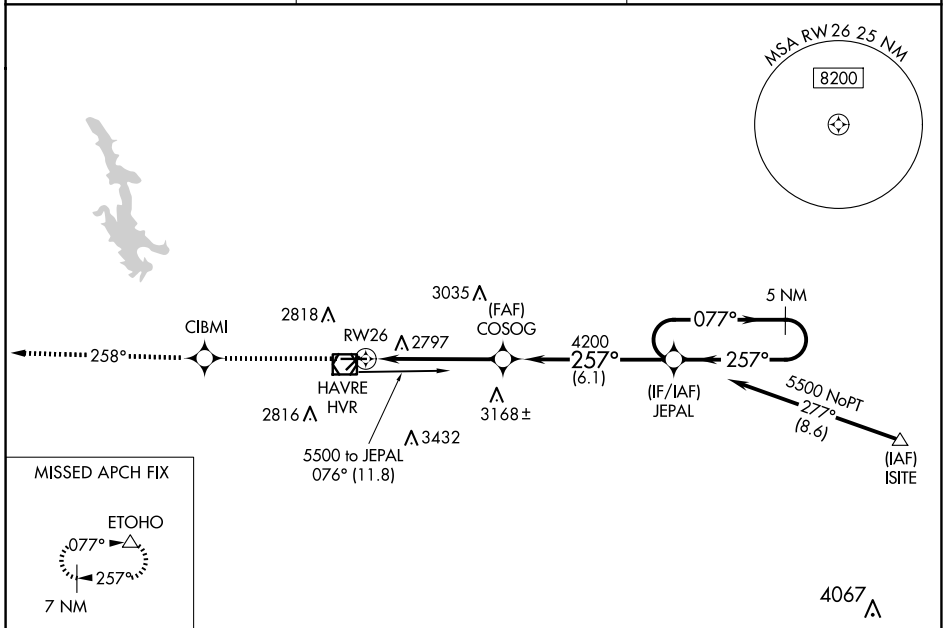
HAVRE CITY-COUNTY (HVR)

RNP APCH-GPS.

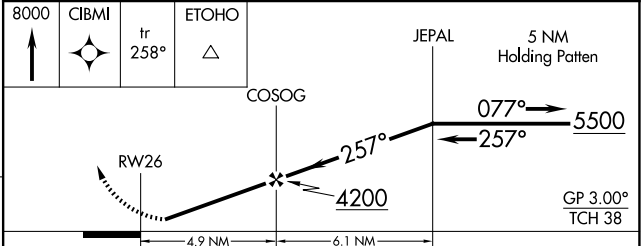
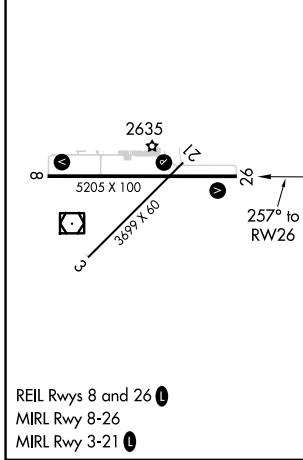
⚠ For uncompensated Baro-VNAV systems,
LNAV/VNAV NA below -20°C or above 54°C.

MISSED APPROACH: Climb to 8000 direct CIBMI and on track 258° to ETOHO and hold, continue climb-in-hold to 8000.

ASOS 135.225	SALT LAKE CENTER 133.4 285.4	UNICOM 122.8 (CTAF) 0
------------------------	--	---------------------------------



ELEV 2591	D	TDZE 2586
-----------	----------	-----------



CATEGORY	A	B	C	D
LPV DA	2836-3/4		250 (300-3/4)	
LNAV/ VNAV DA	3097-1 3/4		511 (600-1 3/4)	
LNAV MDA	3060-1	474 (500-1)	3060-1 1/4 474 (500-1 1/4)	3060-1 1/2 474 (500-1 1/2)
CIRCLING	3080-1 489 (500-1)	3120-1 529 (600-1)	3360-2 1/4 769 (800-2 1/4)	3740-3 1149 (1200-3)

NW-1, 20 FEB 2025 to 20 MAR 2025

NW-1, 20 FEB 2025 to 20 MAR 2025