

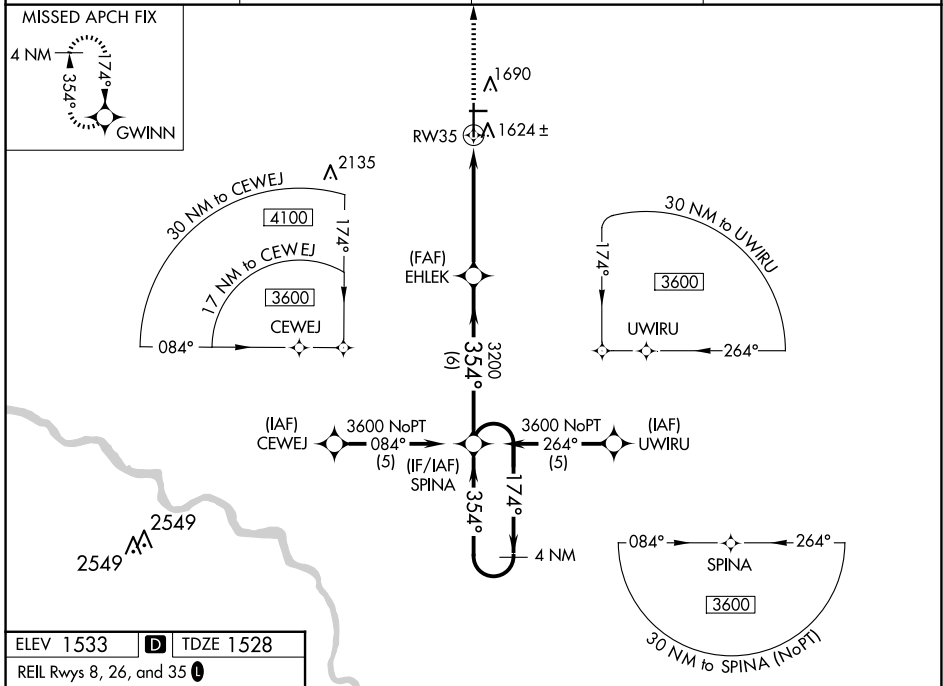
WAAS CH 56229 W35A	APP CRS 354°	Rwy Idg 7003 TDZE 1528 Apt Elev 1533
--	------------------------	---

RNAV (GPS) RWY 35

NEWTON-CITY-COUNTY (E WK)

RNP APCH	<p>When local altimeter setting not received, use Wichita Dwight D Eisenhower Ntl altimeter setting: increase LPV DA to 1878 feet and visibility ¼ SM; increase all MDAs 100 feet and visibility LNAV Cat C ¾ SM and LNAV Cat D ½ SM. VDP NA when using Wichita Dwight D Eisenhower Ntl altimeter setting. Circling Rwy 8, 26 NA at night.</p>	MISSED APPROACH: Climb to 3200 direct GWINN and hold.
----------	--	--

AWOS-3PT 123.875	WICHITA APP CON 125.5 306.2	CLNC DEL 126.55	UNICOM 123.0 (CTAF) 0
----------------------------	---------------------------------------	---------------------------	---------------------------------

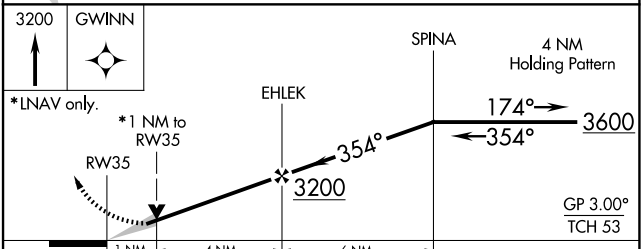
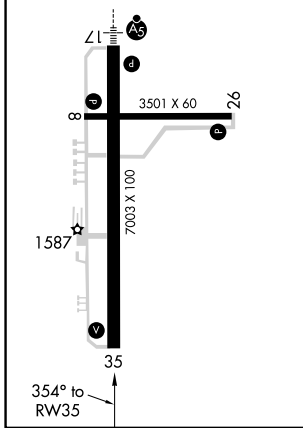


ELEV 1533	D	TDZE 1528
-----------	----------	-----------

REIL Rws 8, 26, and 35 **1**

HIRL Rwy 17-35 **1**

MIRL Rwy 8-26



CATEGORY	A	B	C	D
LPV DA	1778-¾ 250 (300-¾)			
LNAV/VNAV DA	NA			
LNAV MDA	1880-1 352 (400-1)			1880-1½ 352 (400-1½)
CIRCLING	2000-1 467 (500-1)		2000-1½ 467 (500-1½)	
			2100-2 567 (600-2)	

NC-2, 20 FEB 2025 to 20 MAR 2025

NC-2, 20 FEB 2025 to 20 MAR 2025