

WAAS CH 97423 W06A	APP CRS 064°	Rwy Idg TDZE Apt Elev	5301 822 823
--	------------------------	-----------------------------	---

RNAV (GPS) RWY 6

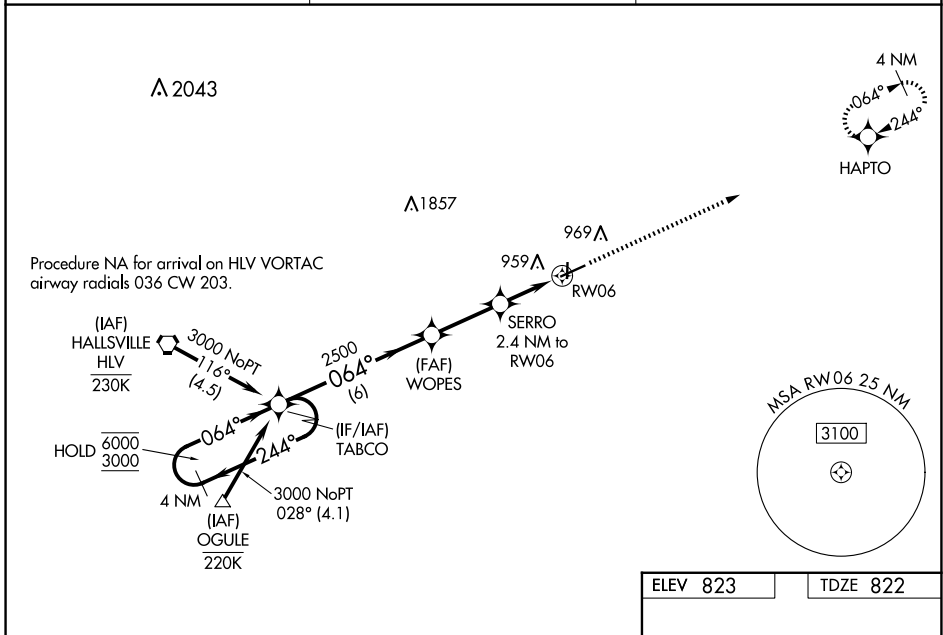
MEXICO MEML (MYJ)

RNP APCH - GPS.

NA Baro-VNAV and VDP NA when using Columbia altimeter setting. For uncompensated Baro-VNAV systems, LNAV/VNAV NA below -16°C or above 54°C. When local altimeter setting not received, use Columbia altimeter setting; increase LPV DA to 1146 feet and visibilities ¼ SM; increase LNAV/VNAV DA to 1167 feet and visibilities ½ SM; increase all MDAs 80 feet and LNAV visibility Cat C ¾ SM and Circling visibility Cat C ½ SM.

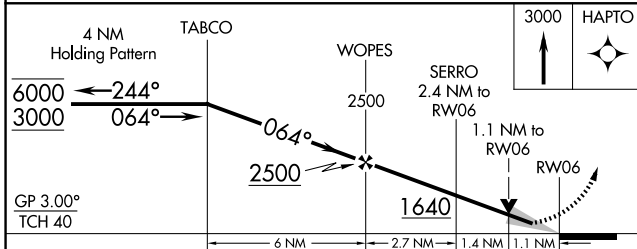
MISSED APPROACH: Climb to 3000 direct HAPTO and hold.

AWOS-3PT 120.575	MIZU APP CON 124.375	CTAF 122.90
----------------------------	--------------------------------	-----------------------

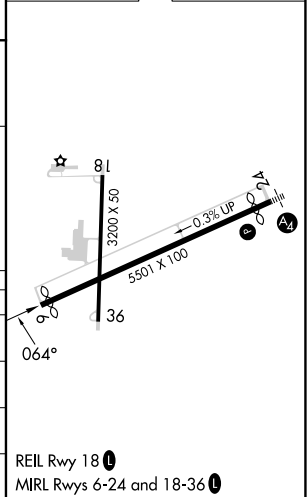


NC-3, 20 FEB 2025 to 20 MAR 2025

NC-3, 20 FEB 2025 to 20 MAR 2025



ELEV 823	TDZE 822
----------	----------



CATEGORY	A	B	C	D
LPV DA	1072-¾	250 (300-¾)		NA
LNAV/VNAV DA	1093-⅞	271 (300-⅞)		NA
LNAV MDA	1200-1	378 (400-1)		NA
CIRCLING	1280-1	457 (500-1)	1420-1½ 597 (600-1½)	NA