

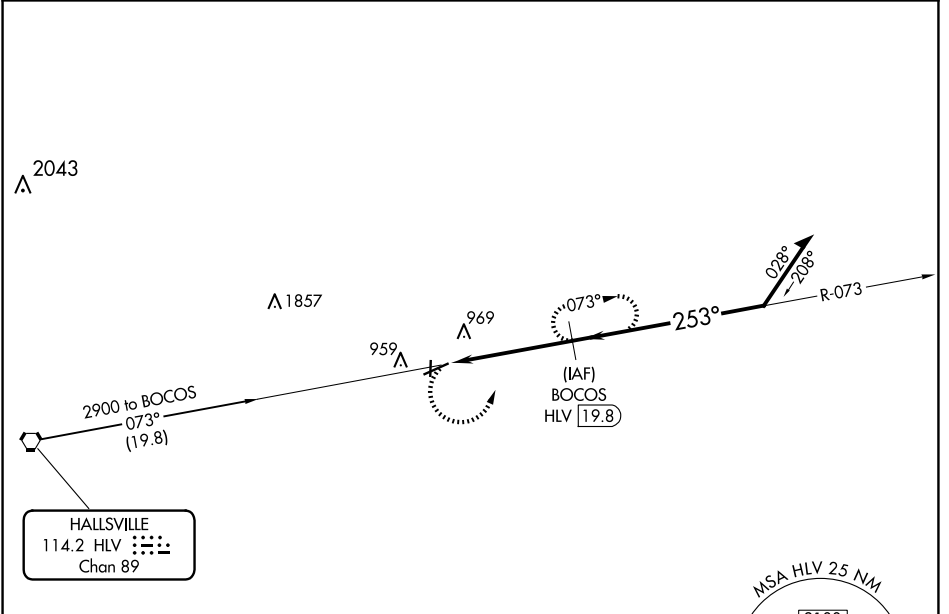


VORTAC HLV 114.2 Chan 89	APP CRS 253°	Rwy Idg TDZE Apt Elev	5130 817 823
--	------------------------	-----------------------------	---

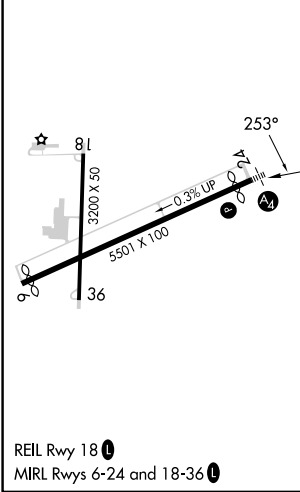
VOR/DME RWY 24

MEXICO MEML (MYJ)

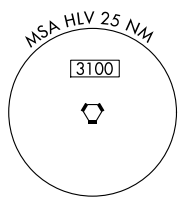
<p>⚠ NA Helicopter visibility reduction below ¾ SM NA. When local altimeter setting not received, use Columbia Rgnl altimeter setting and increase all MDAs 80 feet, increase S-24 visibility Cat C ½ SM and Circling visibility Cat C ½ SM. Inop table does not apply.</p>	<p>MALS </p> <p>MISSED APPROACH: Climbing left turn to 2300 via HLV R-073 to BOCOS/19.8 DME and hold.</p>	
AWOS-3PT 120.575	MIZZU APP CON 124.375	CTAF 122.9 



ELEV 823	TDZE 817
-----------------	-----------------



<p>2300</p> <p>HLV R-073</p> <p>BOCOS HLV 19.8</p> <p>BOCOS HLV 19.8</p> <p>Remain within 10 NM</p> <p>073°</p> <p>2300</p> <p>253°</p> <p>2300</p> <p>≤ 3.00° TCH 40</p> <p>4.6 NM</p>															
<table border="1"> <thead> <tr> <th>CATEGORY</th> <th>A</th> <th>B</th> <th>C</th> <th>D</th> </tr> </thead> <tbody> <tr> <td>S-24</td> <td>1220-1</td> <td>403 (400-1)</td> <td>1220-1¼ 403 (400-1¼)</td> <td>NA</td> </tr> <tr> <td>CIRCLING</td> <td>1280-1</td> <td>457 (500-1)</td> <td>1420-1½ 597 (600-1½)</td> <td>NA</td> </tr> </tbody> </table>	CATEGORY	A	B	C	D	S-24	1220-1	403 (400-1)	1220-1¼ 403 (400-1¼)	NA	CIRCLING	1280-1	457 (500-1)	1420-1½ 597 (600-1½)	NA
CATEGORY	A	B	C	D											
S-24	1220-1	403 (400-1)	1220-1¼ 403 (400-1¼)	NA											
CIRCLING	1280-1	457 (500-1)	1420-1½ 597 (600-1½)	NA											



NC-3, 20 FEB 2025 to 20 MAR 2025

NC-3, 20 FEB 2025 to 20 MAR 2025