

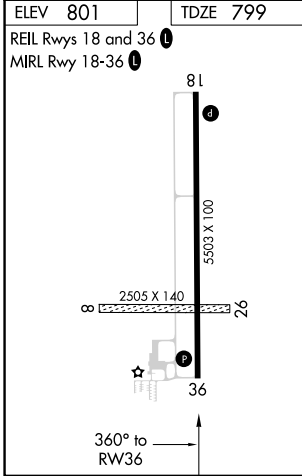
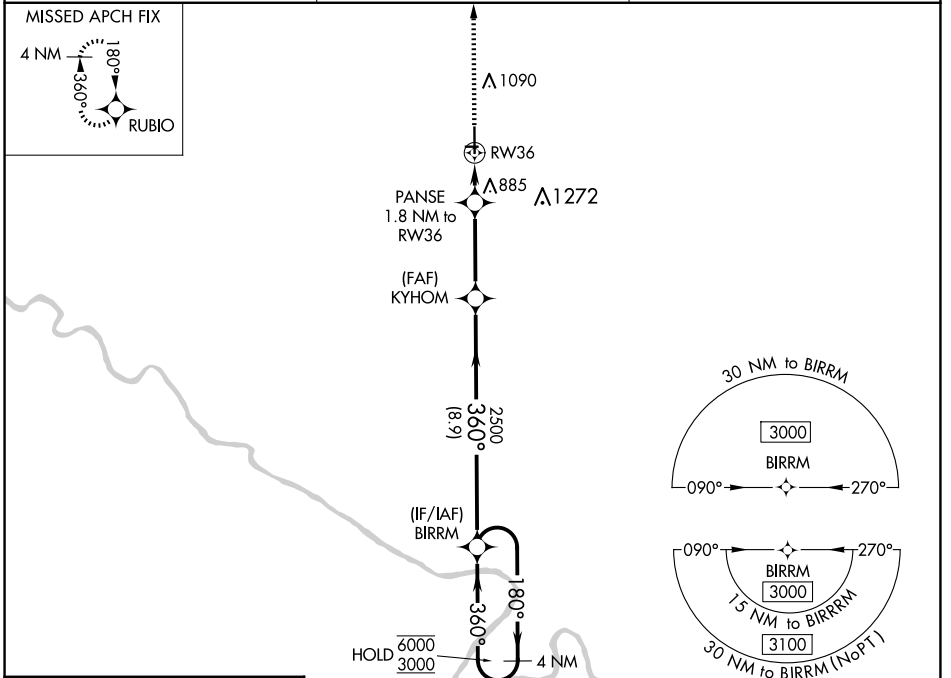
WAAS CH <b>72804</b> <b>W36A</b>	APP CRS <b>360°</b>	Rwy Idg TDZE Apt Elev	<b>5503</b> <b>799</b> <b>801</b>
--	------------------------	-----------------------------	---

# RNAV (GPS) RWY 36

FAIRFIELD MUNI (F'FL)

RNP APCH.	MISSED APPROACH: Climb to 3000 direct RUBIO and hold.
<p>⚠ Circling NA to Rwy 8 and 26. For uncompensated Baro-VNAV systems, LNAV/VNAV NA below -16°C or above 54°C.</p>	

AWOS-3 <b>132.025</b>	CHICAGO CENTER <b>118.15 335.575</b>	UNICOM <b>122.7 (CTAF)</b>
--------------------------	---	-------------------------------



ELEV 801	TDZE 799	<p>REIL Rwy 18 and 36</p> <p>MIRL Rwy 18-36</p>			
<p>3000 RUBIO</p> <p>*LNAV only</p> <p>PANSE 1.8 NM to RW36</p> <p>*1 NM to RW36</p> <p>RW36</p> <p>1 NM 0.8 3.4 NM 8.9 NM</p>		<p>BIRRM</p> <p>4 NM Holding Pattern</p> <p>180° → 6000</p> <p>← 360° 3000</p> <p>GP 3.00° TCH 40</p>			
CATEGORY	A	B	C	D	
LPV DA	999- <sup>3</sup> / <sub>4</sub>		200 (200- <sup>3</sup> / <sub>4</sub> )	NA	
LNAV/VNAV DA	1049- <sup>3</sup> / <sub>4</sub>		250 (300- <sup>3</sup> / <sub>4</sub> )	NA	
LNAV MDA	1140-1		341 (400-1)	NA	
<b>C</b> CIRCLING	1200-1 399 (400-1)	1440-1 639 (700-1)	1440-1 <sup>3</sup> / <sub>4</sub> 639 (700-1 <sup>3</sup> / <sub>4</sub> )	NA	

NC-3, 20 FEB 2025 to 20 MAR 2025

NC-3, 20 FEB 2025 to 20 MAR 2025