

LOC/DME	I-OTI	APP CRS	Rwy Idg	2999
108.5		219°	TDZE	172
Chan 22			Apt Elev	172

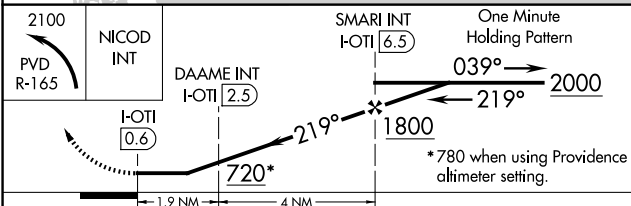
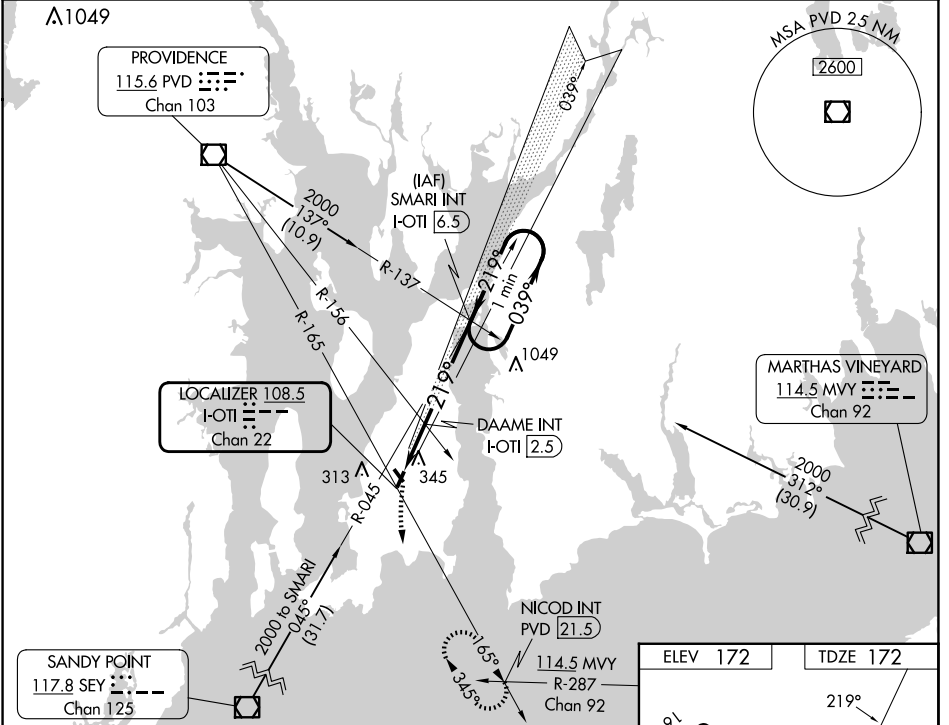
# LOC RWY 22

NEWPORT STATE (UUU)

**NA** When local altimeter setting not received, use Providence altimeter setting and increase all MDA 60 feet. Straight-in Rwy 22 NA at night, Circling Rwy 4, 22, 34 NA at night.

MISSED APPROACH: Climbing left turn to 2100 via PVD VOR/DME R-165 to NICOD INT/21.5 DME and hold.

ASOS	PROVIDENCE APP CON*	CLNC DEL	UNICOM
132.075	128.7 269.525	127.25	123.05 (CTAF) <b>0</b>



CATEGORY	A	B	C	D
S-22	720-1	548 (600-1)	720-1 <sup>5</sup> / <sub>8</sub> 548 (600-1 <sup>5</sup> / <sub>8</sub> )	NA
CIRCLING	760-1	588 (600-1)	780-1 <sup>3</sup> / <sub>4</sub> 608 (700-1 <sup>3</sup> / <sub>4</sub> )	NA
DAAME FIX MINIMUMS (DUAL VOR RECEIVERS OR DME REQUIRED)				
S-22	640-1	468 (500-1)	640-1 <sup>1</sup> / <sub>4</sub> 468 (500-1 <sup>1</sup> / <sub>4</sub> )	NA
CIRCLING	760-1	588 (600-1)	780-1 <sup>3</sup> / <sub>4</sub> 608 (700-1 <sup>3</sup> / <sub>4</sub> )	NA

ELEV 172	TDZE 172
----------	----------

Runway 22 diagram showing dimensions: 2623 x 75. Taxiway width: 2999 x 75. Holding pattern: 0.88 NM UP. Runway width: 210±. A note indicates: REIL Rwy 22 **0**, MIRL Rws 4-22 and 16-34 **0**. FAF to MAP 5.9 NM.

Knots	60	90	120	150	180
Min:Sec	5:54	3:56	2:57	2:22	1:58

NE-1, 20 FEB 2025 to 20 MAR 2025

NE-1, 20 FEB 2025 to 20 MAR 2025