

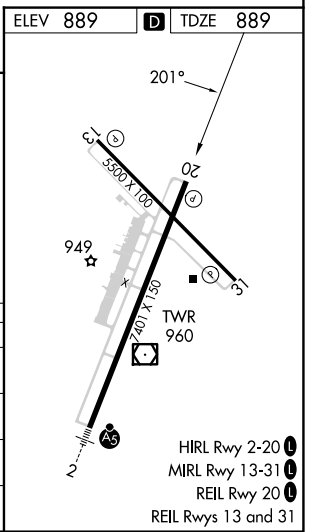
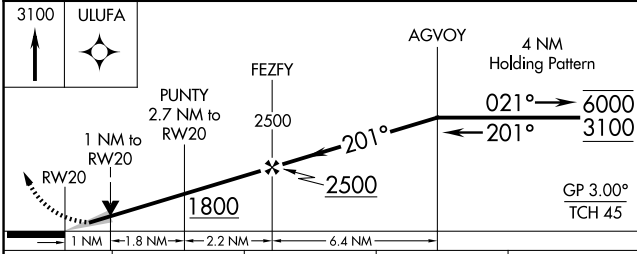
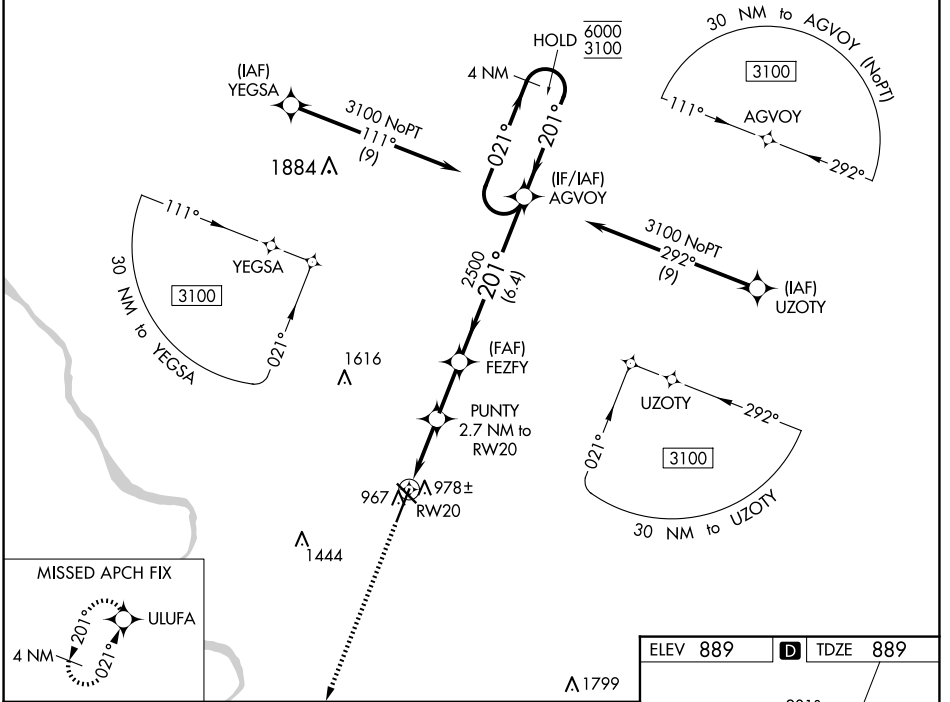
WAAS CH 93599 W20A	APP CRS 201°	Rwy Idg TDZE Apt Elev	7401 889 889
--	------------------------	-----------------------------	---

RNAV (GPS) RWY 20

COLUMBIA RGNL (COU)

RNP APCH - GPS.		COLUMBIA TOWER ★		GND CON	UNICOM
Circling NA for Cat D west of Rwy 2 and 13. For uncompensated Baro-VNAV systems, LNAV/VNAV NA below -16°C or above 54°C.		119.3 (CTAF) 363.25		121.6	122.95
ATIS	MIZZO APP CON				
128.45	124.375 353.925				

MISSED APPROACH: Climb to 3100 direct ULUFA and hold.



CATEGORY	A	B	C	D
LPV DA		1139-¾	250 (300-¾)	
LNAV/VNAV DA		1139-¾	250 (300-¾)	
LNAV MDA		1240-1	351 (400-1)	
CIRCLING	1280-1 391 (400-1)	1340-1 451 (500-1)	1360-1½ 471 (500-1½)	1440-2 551 (600-2)

- HIRL Rwy 2-20
- MIRL Rwy 13-31
- REIL Rwy 20
- REIL Rws 13 and 31

NC-3, 20 FEB 2025 to 20 MAR 2025

NC-3, 20 FEB 2025 to 20 MAR 2025