

VOR/DME COU <b>110.2</b> Chan <b>39</b>	APP CRS <b>153°</b>	Rwy Idg <b>5500</b> TDZE <b>888</b> Apt Elev <b>889</b>
---	------------------------	---

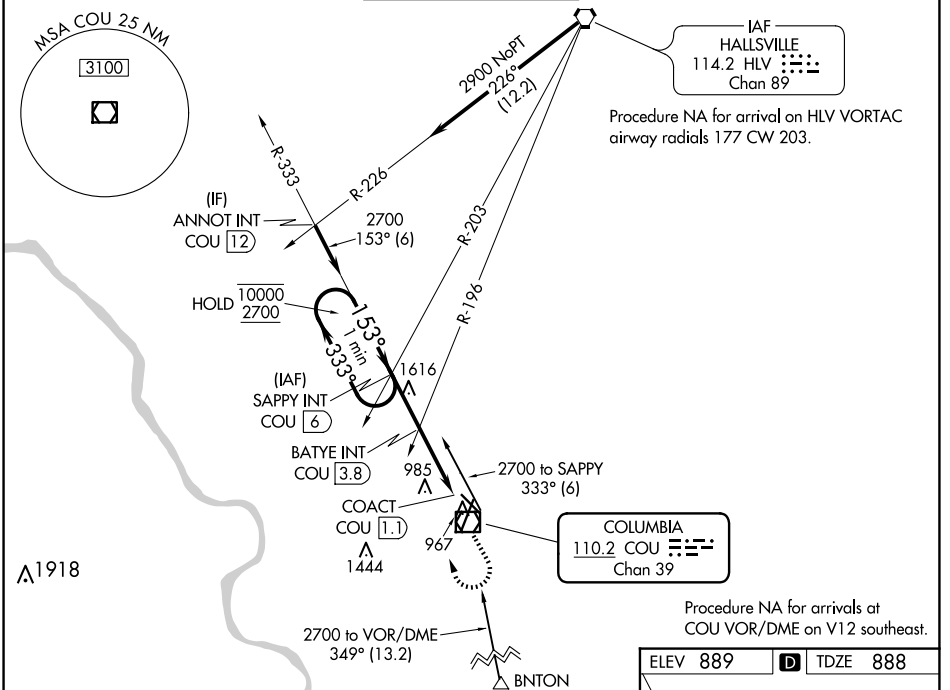
# VOR RWY 13

COLUMBIA RGNL (COU)

**⚠** Circling NA for Cat D west of Rwy 2 and 13.  
**⚠** Circling Rwy 20 NA at night.

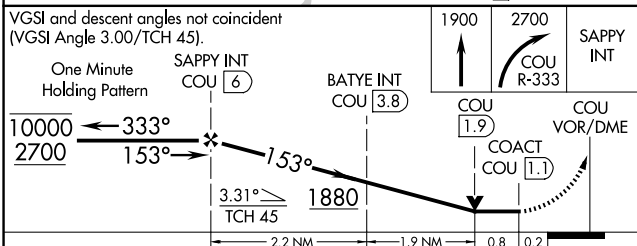
**⚠** MISSED APPROACH: Climb to 1900 then dimbing right turn to 2700 on COU VOR/DME R-333 to SAPPY INT/COU 6 DME and hold.

ATIS <b>128.45</b>	MIZU APP CON <b>124.375 353.925</b>	<b>COLUMBIA TOWER *</b> <b>119.3 (CTAF) 363.25</b>	GND CON <b>121.6</b>	UNICOM <b>122.95</b>
-----------------------	--	---	-------------------------	-------------------------

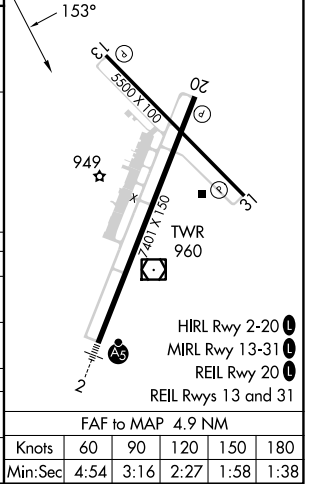


NC-3, 20 FEB 2025 to 20 MAR 2025

NC-3, 20 FEB 2025 to 20 MAR 2025



ELEV 889 **D** TDZE 888



CATEGORY	A	B	C	D
S-13	1880-1¼ 991 (1000-1¼)	1880-1½ 991 (1000-1½)	1880-3	991 (1000-3)
<b>C</b> CIRCLING	1880-1¼ 991 (1000-1¼)	1880-1½ 991 (1000-1½)	1880-3	991 (1000-3)
<b>BATYE FIX MINIMUMS</b>				
S-13	1240-1 351 (400-1)			
<b>C</b> CIRCLING	1300-1 411 (500-1)	1340-1 451 (500-1)	1360-1½ 471 (500-1½)	1440-2 551 (600-2)

FAF to MAP 4.9 NM					
Knots	60	90	120	150	180
Min:Sec	4:54	3:16	2:27	1:58	1:38