

VOR RWY 26R

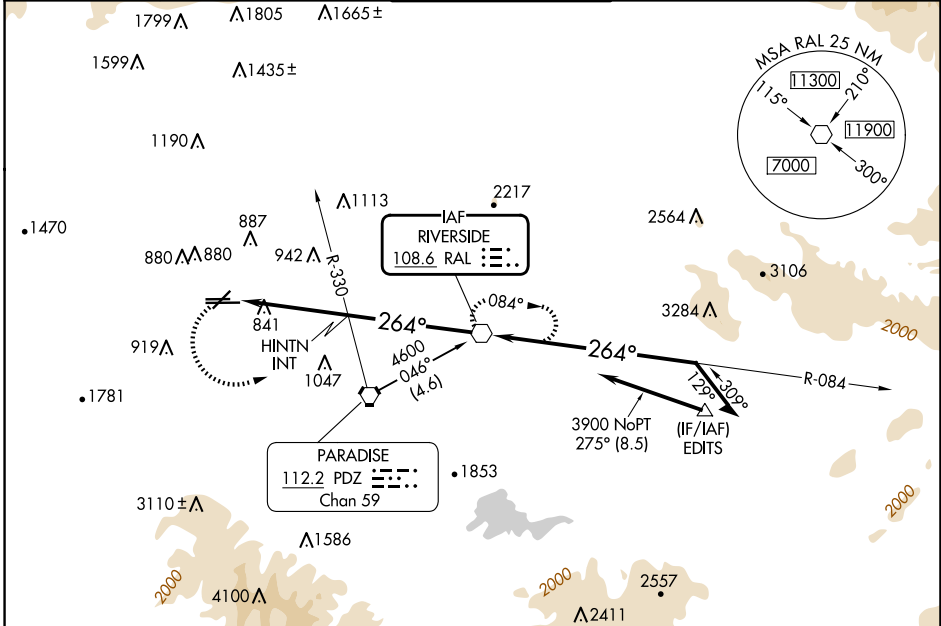
CHINO (CNO)

VOR RAL 108.6	APP CRS 264°	Rwy Idg 4858
		TDZE 636
		Apt Elev 650

NA Rwy 26R helicopter visibility reduction below 3/4 SM NA.
When local altimeter setting not received, use Ontario altimeter setting and increase all MDAs 60 feet; increase HINTN fix minimums visibility S-26R and Circling Cat B, C, and D 1/4 SM.

MISSED APPROACH: Climbing left turn to 4500 direct RAL VOR and hold, continue climb-in-hold to 4500.

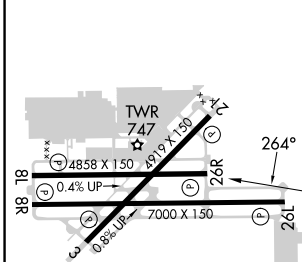
ATIS 125.85	SOCAL APP CON 135.4 377.125	CHINO TOWER * 118.5 (CTAF)	GND CON 121.6	UNICOM 122.95
-----------------------	---------------------------------------	--------------------------------------	-------------------------	-------------------------



SW-3, 20 FEB 2025 to 20 MAR 2025

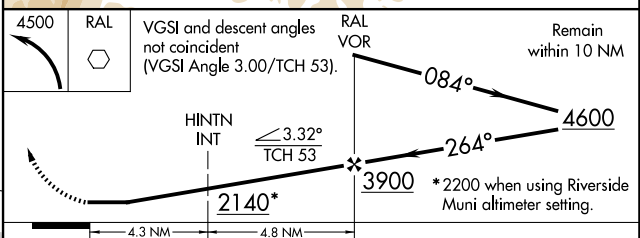
SW-3, 20 FEB 2025 to 20 MAR 2025

ELEV 650	TDZE 636
----------	----------



REIL Rws 3 and 21
MIRL Rws 3-21 and 8R-26L
HIRL Rwy 8L-26R

FAF to MAP 9.1 NM					
Knots	60	90	120	150	180
Min:Sec	9:06	6:04	4:33	3:38	3:02



CATEGORY	A	B	C	D
S-26R	2140-1¼ 1504 (1500-1¼)	2140-1½ 1504 (1500-1½)	2140-3	1504 (1500-3)
CIRCLING	2140-1¼ 1490 (1500-1¼)	2140-1½ 1490 (1500-1½)	2140-3	1490 (1500-3)
HINTN FIX MINIMUMS				
S-26R	1320-1	684 (700-1)	1320-2 684 (700-2)	1320-2¼ 684 (700-2¼)
CIRCLING	1320-1	670 (700-1)	1320-2 670 (700-2)	1340-2¼ 690 (700-2¼)