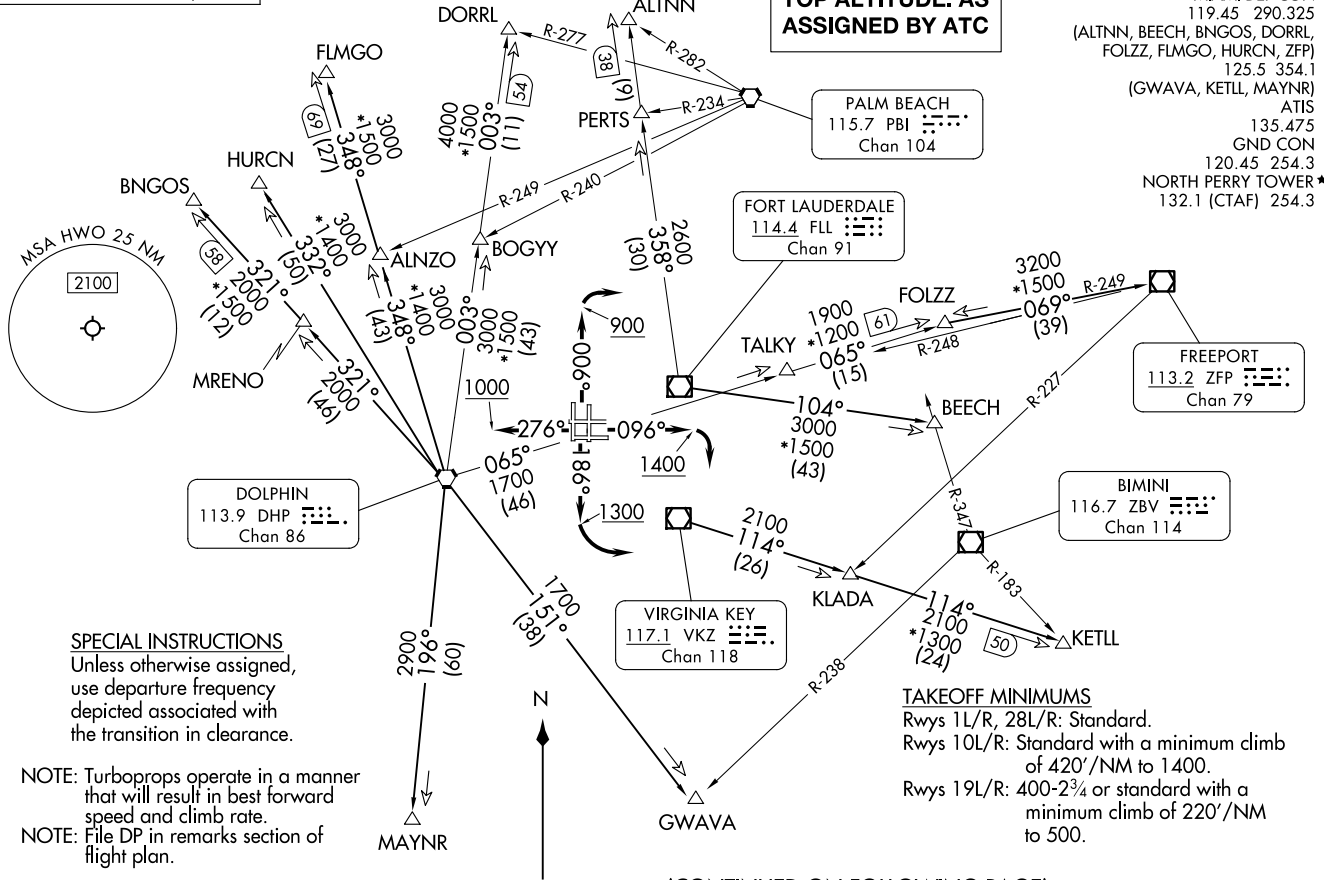


MIAMI TWO DEPARTURE  
HOLLYWOOD, FLORIDA  
NORTH PERRY (HTWO)  
(MIA2.MIA) 26DEC24

RADAR and DME required.

**TOP ALTITUDE: AS  
ASSIGNED BY ATC**

MIAMI DEP CON  
119.45 290.325  
(ALTNN, BEECH, BNGOS, DORRL,  
FOLZZ, FLMGO, HURCN, ZFP)  
125.5 354.1  
(GWAVA, KETLL, MAYNR)  
ATIS  
135.475  
GND CON  
120.45 254.3  
NORTH PERRY TOWER\*  
132.1 (CTAF) 254.3



**SPECIAL INSTRUCTIONS**  
Unless otherwise assigned,  
use departure frequency  
depicted associated with  
the transition in clearance.

NOTE: Turboprops operate in a manner  
that will result in best forward  
speed and climb rate.  
NOTE: File DP in remarks section of  
flight plan.

NOTE: Chart not to scale.

**TAKEOFF MINIMUMS**  
Rwys 1L/R, 28L/R: Standard.  
Rwys 10L/R: Standard with a minimum climb  
of 420'/NM to 1400.  
Rwys 19L/R: 400-2¾ or standard with a  
minimum climb of 220'/NM  
to 500.

(CONTINUED ON FOLLOWING PAGE)

(MIA2.MIA) 24361  
MIAMI TWO DEPARTURE  
AL-5606 (FAA)  
NORTH PERRY (HTWO)  
HOLLYWOOD, FLORIDA

# MIAMI TWO DEPARTURE



## DEPARTURE ROUTE DESCRIPTION

TAKEOFF RUNWAYS 1L/R: Climb on heading 006° to 900 before turning right, thence...  
TAKEOFF RUNWAYS 10L/R: Climb on heading 096° to 1400 before turning right, thence...  
TAKEOFF RUNWAYS 19L/R: Climb on heading 186° to 1300 before turning left, thence...  
TAKEOFF RUNWAYS 28L/R: Climb on heading 276° to 1000, thence...

... on transition, maintain ATC assigned altitude. Expect filed altitude 10 minutes after departure.

ALTNN TRANSITION (MIA2.ALTNN): From over FLL VOR/DME on FLL R-358 to ALTNN.

BEECH TRANSITION (MIA2.BEECH): From over FLL VOR/DME on FLL R-104 to BEECH.

BNGOS TRANSITION (MIA2.BNGOS): From over DHP VORTAC on DHP R-321 to BNGOS.

DORRL TRANSITION (MIA2.DORRL): From over DHP VORTAC on DHP R-003 to DORRL.

FLMGO TRANSITION (MIA2.FLMGO): From over DHP VORTAC on DHP R-348 to FLMGO.

FOLZZ TRANSITION (MIA2.FOLZZ): From over DHP VORTAC on DHP R-065 to FOLZZ.

FREEPORT TRANSITION (MIA2.ZFP): From over DHP VORTAC on DHP R-065 to FOLZZ then on ZFP R-249 to ZFP VOR/DME.

GWAVA TRANSITION (MIA2.GWAVA): From over DHP VORTAC on DHP R-151 to GWAVA.

HURCN TRANSITION (MIA2.HURCN): From over DHP VORTAC on DHP R-332 to HURCN.

KETLL TRANSITION (MIA2.KETLL): From over VKZ VOR/DME on VKZ R-114 to KETLL.

MAYNR TRANSITION (MIA2.MAYNR): From over DHP VORTAC on DHP R-196 to MAYNR.

SE-3, 20 FEB 2025 to 20 MAR 2025

SE-3, 20 FEB 2025 to 20 MAR 2025