

WAAS CH 99302 W01A	APP CRS 010°	Rwy Idg TDZE 1255 Apt Elev 1255	5001
--	------------------------	---	-------------

RNAV (GPS) RWY 1

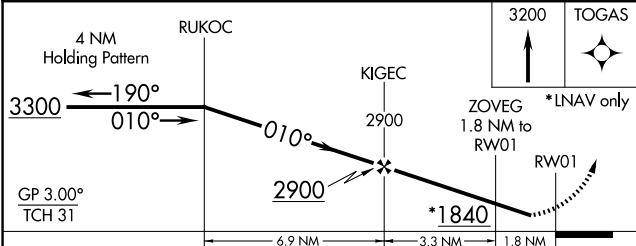
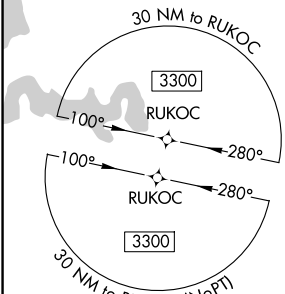
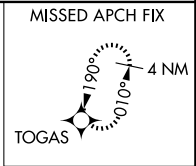
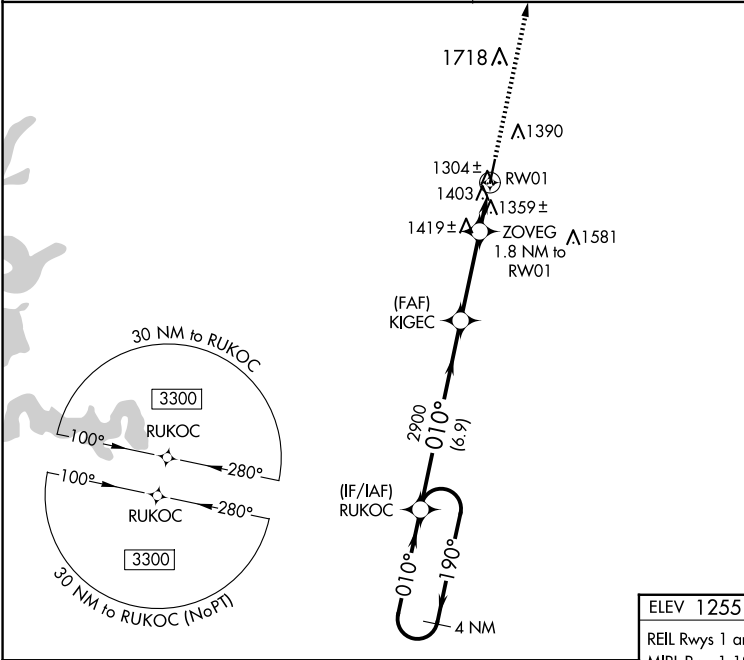
NEOSHO HUGH ROBINSON (E/O/S)

⚠ Baro-VNAV NA when using Joplin altimeter setting. For uncompensated Baro-VNAV systems, LNAV/VNAV NA below -17°C (2°F) or above 54°C (130°F). DME/DME RNP-0.3 NA.
⚠ Visibility reduction by helicopters NA. When local altimeter setting not received, use Joplin altimeter setting and increase all DA 87 feet and all MDA 100 feet; increase LPV all Cats visibility 1/8 mile, LNAV/VNAV all Cats visibility 3/8 mile, and LNAV Cat C visibility 1/4 mile. When VGSI inop, Straight-in/Circling to Rwy 1 NA at night.

MISSED APPROACH:
Climb to 3200 direct TOGAS and hold.

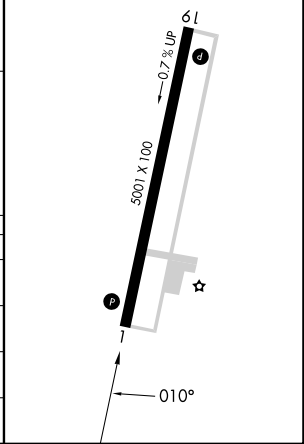
KANSAS CITY CENTER
128.6 282.325

AUNICOM
122.8 (CTAF)



ELEV 1255 | TDZE 1255

REIL Rwys 1 and 19
MIRL Rwy 1-19



CATEGORY	A	B	C	D
LPV DA	1505-1 250 (300-1)			NA
LNAV/VNAV DA	1658-1 3/8 403 (500-1 3/8)			NA
LNAV MDA	1680-1 425 (500-1)		1680-1 1/4 425 (500-1 1/4)	NA
CIRCLING	1720-1 465 (500-1)	1740-1 485 (500-1)	1740-1 1/2 485 (500-1 1/2)	NA

NC-3, 20 FEB 2025 to 20 MAR 2025

NC-3, 20 FEB 2025 to 20 MAR 2025