

PLAINS ONE DEPARTURE
(PLAIN1.DEN) 30/AN20

PLAINS ONE DEPARTURE
23334

AI-5612 (FAA)

ROCKY MOUNTAIN METRO (BJC)
DENVER, COLORADO

DENVER DEP CON
125.12 263.02
ATIS
126.25
CLNC DEL
132.6

**TOP ALTITUDE:
ASSIGNED BY ATC**

AKRON
114.4 AKO
Chan 91

HAYES CENTER
117.7 HCT
Chan 124

MC COOK
115.3 MCK
Chan 100

THURMAN
112.9 TXC
Chan 76

GOODLAND
115.1 GLD
Chan 98

GARDEN CITY
113.3 GCK
Chan 80

DENVER
117.9 DEN
Chan 126

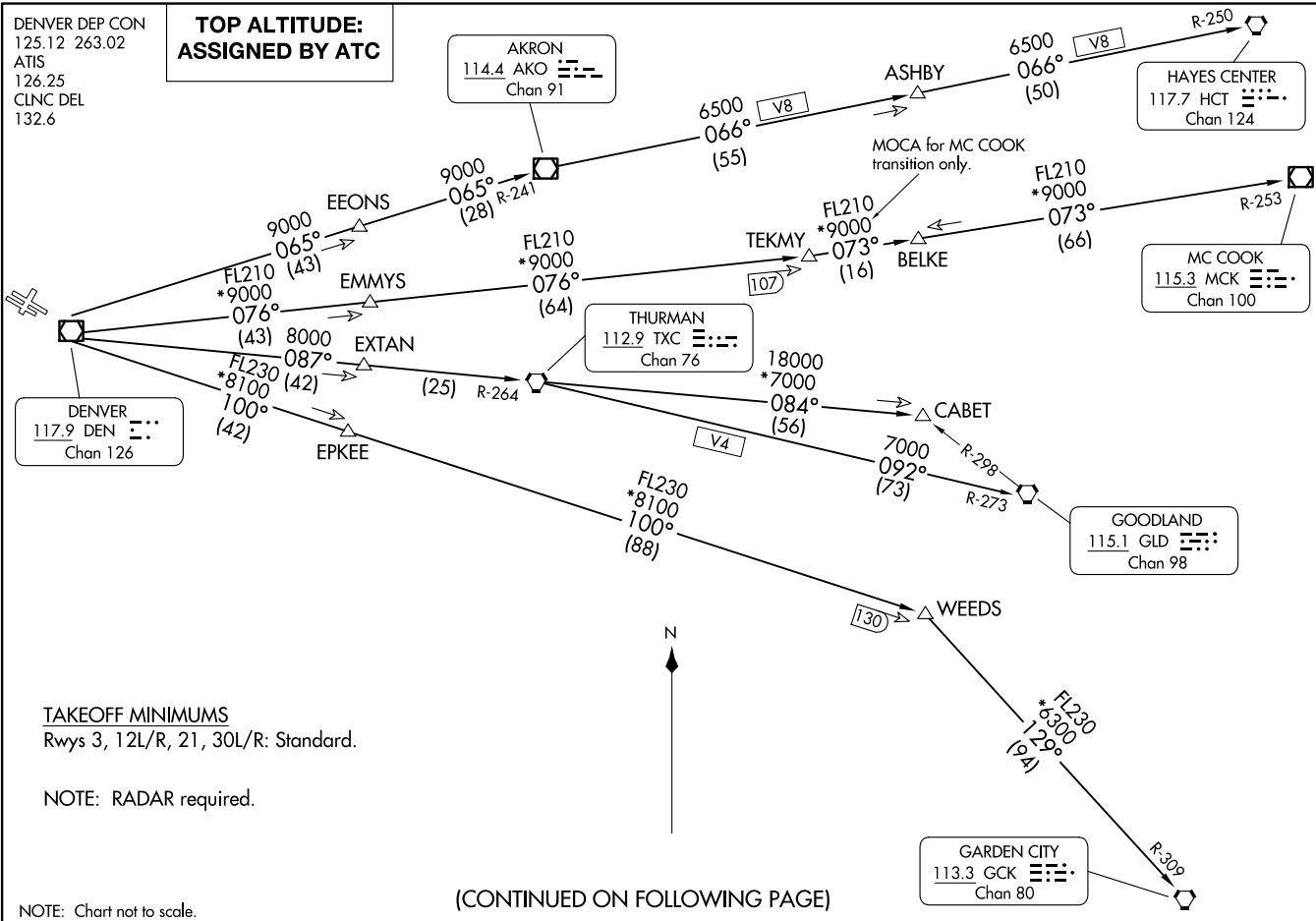
TAKEOFF MINIMUMS
Rwys 3, 12L/R, 21, 30L/R: Standard.

NOTE: RADAR required.

NOTE: Chart not to scale.

(CONTINUED ON FOLLOWING PAGE)

DENVER, COLORADO
ROCKY MOUNTAIN METRO (BJC)





DEPARTURE ROUTE DESCRIPTION

TAKEOFF RUNWAY 3: Climb to assigned altitude and heading between 350° CW 150° from DER, Thence. . . .

TAKEOFF RUNWAYS 12L/R: Climb to assigned altitude and heading between 150° CCW 350° from DER. Thence. . . .

TAKEOFF RUNWAY 21: Climbing left turn to assigned altitude and heading between 150° CCW to 024° from DER. Thence. . . .

TAKEOFF RUNWAYS 30L/R: Climbing right turn to assigned altitude and heading between 350° CW 113° from DER. Thence. . . .

. . . .RADAR vectors to assigned route. Expect filed altitude 10 minutes after departure.

LOST COMMUNICATIONS: If no transmissions are received within one minute after departure, maintain assigned heading until 7000 feet, then climb to filed altitude via direct DEN VOR/DME, thence via assigned transition. If filed altitude is above 10000 feet, cross DEN VOR/DME at or above 11000 feet.

AKRON TRANSITION (PLAIN1.AKO): From over DEN VOR/DME on DEN R-065 and AKO R-241 to AKO VOR/DME.

ASHBY TRANSITION (PLAIN1.ASHBY): From over DEN VOR/DME on DEN R-065 and AKO R-241 to AKO VOR/DME, then on AKO R-066 and HCT R-250 to ASHBY.

BELKE TRANSITION (PLAIN1.BELKE): From over DEN VOR/DME on DEN R-076 and MCK R-253 to BELKE INT.

CABET TRANSITION (PLAIN1.CABET): From over DEN VOR/DME on DEN R-087 and TXC R-264 to TXC VORTAC, then on TXC R-084 to CABET.

GARDEN CITY TRANSITION (PLAIN1.GCK): From over DEN VOR/DME on DEN R-100 and GCK R-309 to GCK VORTAC.

GOODLAND TRANSITION (PLAIN1.GLD): From over DEN VOR/DME on DEN R-087 and TXC R-264 to TXC VORTAC, then on TXC R-092 and GLD R-273 to GLD VORTAC.

HAYES CENTER TRANSITION (PLAIN1.HCT): From over DEN VOR/DME on DEN R-065 and AKO R-241 to AKO VOR/DME, then on AKO R-066 and HCT R-250 to HCT VORTAC.

MCCOOK TRANSITION (PLAIN1.MCK): From over DEN VOR/DME on DEN R-076 to TEKMY, then on MCK R-253 to MCK VOR/DME.

THURMAN TRANSITION (PLAIN1.TXC): From over DEN VOR/DME on DEN R-087 and TXC R-264 to TXC VORTAC.

WEEDS TRANSITION (PLAIN1.WEEDS): From over DEN VOR/DME on DEN R-100 to WEEDS.

SW-1, 20 FEB 2025 to 20 MAR 2025

SW-1, 20 FEB 2025 to 20 MAR 2025