

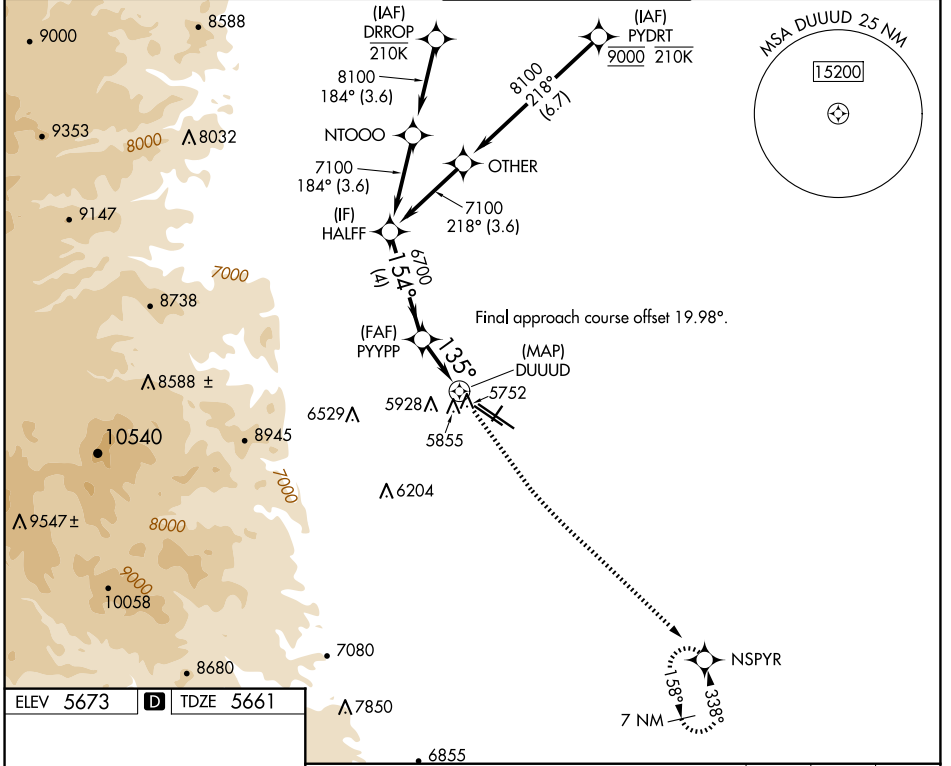
WAAS CH 77938 W12A	APP CRS 135°	Rwy Idg TDZE Apt Elev	9000 5661 5673
--	------------------------	-----------------------------	---

RNAV (GPS) RWY 12L

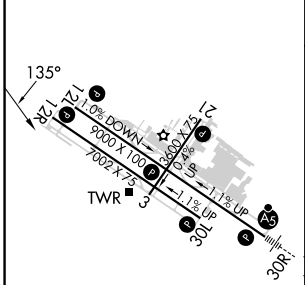
ROCKY MOUNTAIN METRO (B.JC)

RNP APCH.	MISSED APPROACH: Climb to 6200 then climbing left turn to 8400 direct NSPYR and hold.		
	Circling NA for Cat D southwest of Rwy 12R-30L		

ATIS 126.25	DENVER APP CON 125.12 263.02	METRO TOWER ★ 118.6 (CTAF) 233.7	GND CON 121.7	CLNC DEL 132.6
-----------------------	--	--	-------------------------	--------------------------



ELEV 5673	D	TDZE 5661
-----------	----------	-----------



HALFF	7100	154°	PYPPP	6700	135°	DUUUD	0.8
		4 NM			2.3 NM		
CATEGORY	A	B	C	D			
LP MDA	6020-1 359 (400-1)						
LNAV MDA	6120-1 459 (500-1)		6120-1 3/8 459 (500-1 3/8)				
C CIRCLING	6180-1 507 (600-1)	6240-1 567 (600-1)	6360-2 687 (700-2)	6360-2 1/4 687 (700-2 1/4)			

SW-1, 20 FEB 2025 to 20 MAR 2025

SW-1, 20 FEB 2025 to 20 MAR 2025