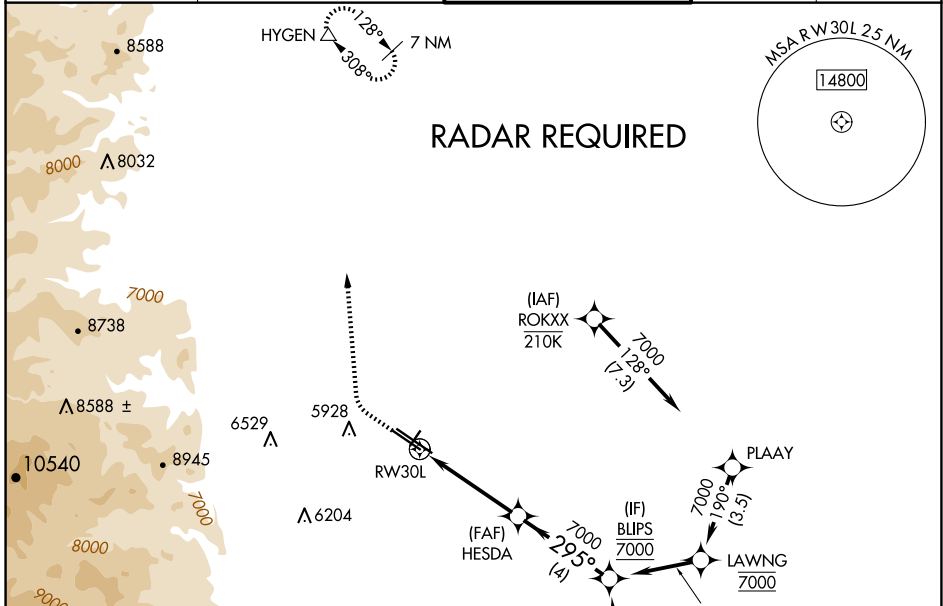


WAAS CH <b>42508</b> <b>W30A</b>	APP CRS <b>295°</b>	Rwy Idg <b>7002</b> TDZE <b>5628</b> Apt Elev <b>5673</b>
--	------------------------	---

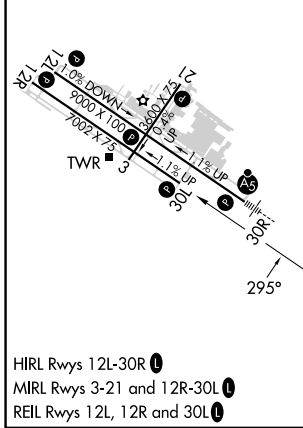
# RNAV (GPS) RWY 30L

ROCKY MOUNTAIN METRO (B.JC)

<p><b>NA</b> Baro-VNAV and VDP NA when using Denver Intl altimeter setting. For uncompensated Baro-VNAV systems, LNAV/VNAV NA below -26°C (-14°F) or above 47°C (116°F). DME/DME RNP-0.3 NA. When local altimeter setting not received, use Denver Intl altimeter setting and increase all DA 82 feet and all MDA 100 feet. Increase LPV all Cats, LNAV/VNAV all Cats, LNAV Cats C/D and Circling Cat C visibility ¼ mile.</p>	<p><b>MISSED APPROACH:</b> Climb to 6300 then climbing right turn to 10300 direct HYGEM and hold, continue climb-in-hold to 10300.</p>			
	ATIS <b>126.25</b>	DENVER APP CON <b>125.12 263.02</b>	METRO TOWER ★ <b>118.6 (CTAF) 233.7</b>	GND CON <b>121.7</b>



ELEV <b>5673</b>	<b>D</b>	TDZE <b>5628</b>
------------------	----------	------------------



	6300	10300	HYGEM	HESDA	BLIPS
	↑	↷	△	7000	7000
	*LNAV only.		*1 NM to RWY30L	295°	7000
	RWY30L		1 NM	3.3 NM	4 NM
CATEGORY	A		B	C	D
LPV DA	5828-3/4		200 (200-3/4)		
LNAV/VNAV DA	5926-1/8		298 (300-1/8)		
LNAV MDA	5960-1		332 (300-1)		
<b>C</b> CIRCLING	6180-1 507 (600-1)	6240-1 567 (600-1)	6360-2 687 (700-2)	6860-3 1187 (1200-3)	

SW-1, 20 FEB 2025 to 20 MAR 2025

SW-1, 20 FEB 2025 to 20 MAR 2025