

WAAS CH <b>82707</b> W30B	APP CRS <b>295°</b>	Rwy Idg TDZE <b>9000</b> 5599 Apt Elev <b>5673</b>
---------------------------------	------------------------	---

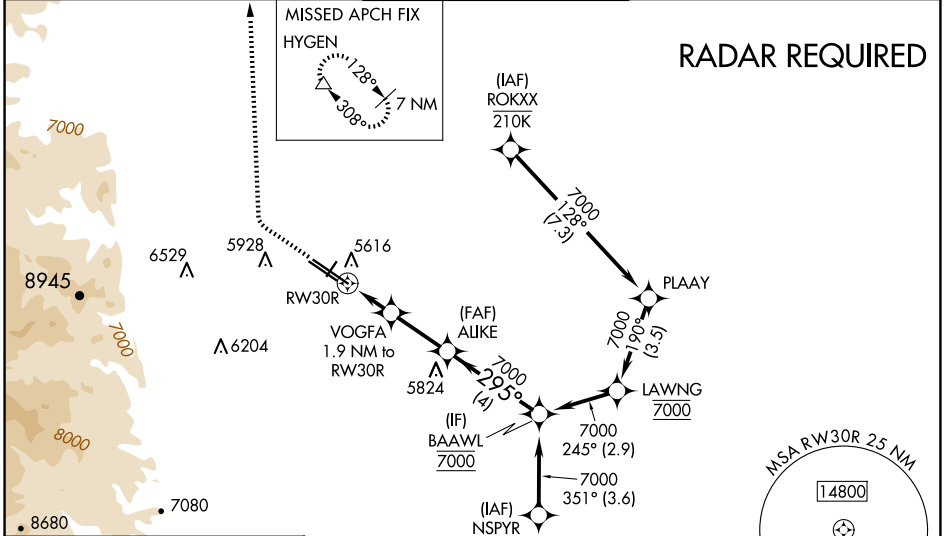
# RNAV (GPS) RWY 30R

ROCKY MOUNTAIN METRO (BJC)

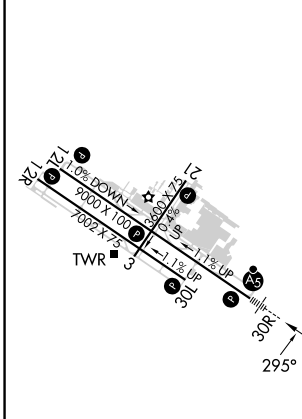
**NA** Baro-VNAV and VDP NA when using Denver Intl altimeter setting. For uncompensated Baro-VNAV systems, LNAV/VNAV NA below -26°C (-14°F) or above 47°C (116°F). DME/DME RNP-0.3 NA. When local altimeter setting not received, use Denver Intl altimeter setting and increase all DA 82 feet and all MDA 100 feet, increase LNAV/VNAV all Cats, LNAV Cat C/D and Circling Cat C visibility 1/4 mile. For inoperative MALS, increase LNAV/VNAV all Cats visibility to 1 1/8 mile and LNAV Cat C/D visibility to 1 mile. For inoperative MALS, when using Denver Intl altimeter setting, increase LPV all Cats visibility to 1 mile, LNAV/VNAV all Cats visibility to 1 1/8 mile and LNAV Cat A/B visibility to 1 mile and Cat C/D visibility to 1 1/8 mile.

**MALS** MISSED APPROACH: Climb to 6300 then climbing right turn to 10300 direct HYGEN and hold, continue climb-in-hold to 10300.

ATIS <b>126.25</b>	DENVER APP CON <b>125.12 263.02</b>	METRO TOWER ★ <b>118.6 (CTAF) 233.7</b>	GND CON <b>121.7</b>	CLNC DEL <b>132.6</b>
-----------------------	--	--	-------------------------	--------------------------



ELEV 5673	<b>D</b>	TDZE 5599
-----------	----------	-----------



HIRL Rwy 12L-30R **1**  
MIRL Rwy 3-21 and 12R-30L **1**  
REIL Rwy 12L, 12R and 30L **1**

6300	10300	HYGEN	ALIJE	BAOWL
↑	↷	△	7000	7000
*LNAV only.		VOGFA 1.9 NM to RWY 30R	7000	7000
RWY 30R		*1 NM to RWY 30R	295°	7000
6220*		7000	7000	GP 3.00° TCH 52
-1 NM		-0.9	2.4 NM	4 NM

CATEGORY	A	B	C	D
LPV DA		5799-1/2	200 (200-1/2)	
LNAV/VNAV DA		5900-5/8	301 (300-5/8)	
LNAV MDA	5940-1/2	341 (300-1/2)	5940-5/8	341 (300-5/8)
<b>C</b> CIRCLING	6180-1 507 (600-1)	6240-1 567 (600-1)	6360-2 687 (700-2)	6860-3 1187 (1200-3)

SW-1, 20 FEB 2025 to 20 MAR 2025

SW-1, 20 FEB 2025 to 20 MAR 2025