

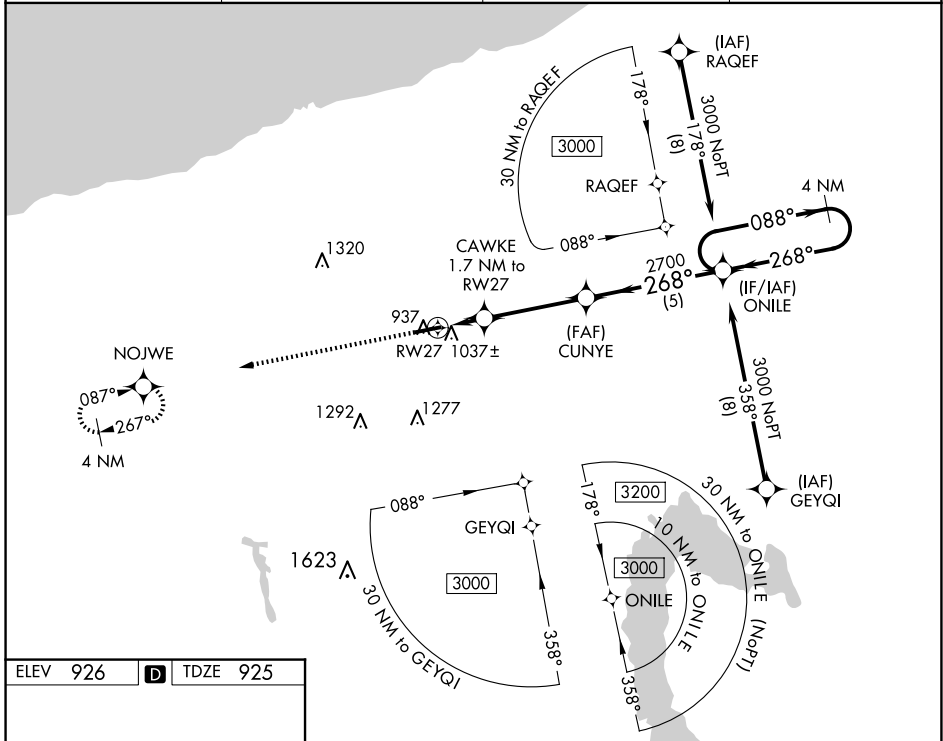
WAAS CH 72713 W27A	APP CRS 268°	Rwy Idg TDZE Apt Elev	5100 925 926
--	------------------------	-----------------------------	---

RNAV (GPS) RWY 27

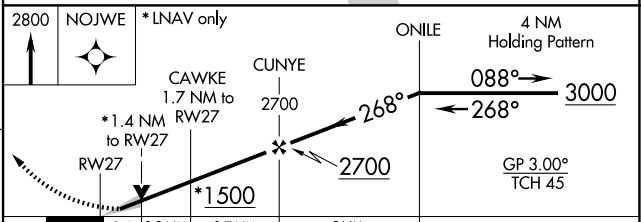
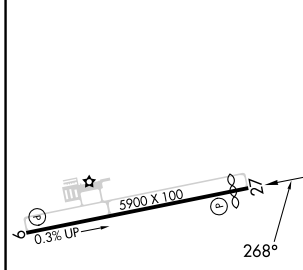
NORTHEAST OHIO RGNL (HZY)

▼ For uncompensated Baro-VNAV systems, LNAV/VNAV NA below -21°C (-5°F) or above 54°C (130°F). DME/DME RNP-0.3 NA. MISSED APPROACH: Climb to 2800 direct NOJWE and hold.

ASOS 118.325	BUFFALO APP CON * 121.0	UNICOM 122.8 (CTAF)	123.3 0
------------------------	-----------------------------------	-------------------------------	-----------------------



ELEV 926	D	TDZE 925
----------	----------	----------



CATEGORY	A	B	C	D
LPV DA		1184-7/8	259 (300-7/8)	
LNAV/VNAV DA		1198-7/8	273 (300-7/8)	
LNAV MDA		1300-1	375 (400-1)	
CIRCLING	1340-1 414 (500-1)	1380-1 454 (500-1)	1500-1½ 574 (600-1½)	1580-2 654 (700-2)

EC-2, 20 FEB 2025 to 20 MAR 2025

EC-2, 20 FEB 2025 to 20 MAR 2025