

LOC/DME I-PSG 110.5 Chan 42	APP CRS 164°	Rwy ldg TDZE Apt Elev 113	N/A N/A 113
-------------------------------------------------	------------------------	-------------------------------------------	----------------------------------------

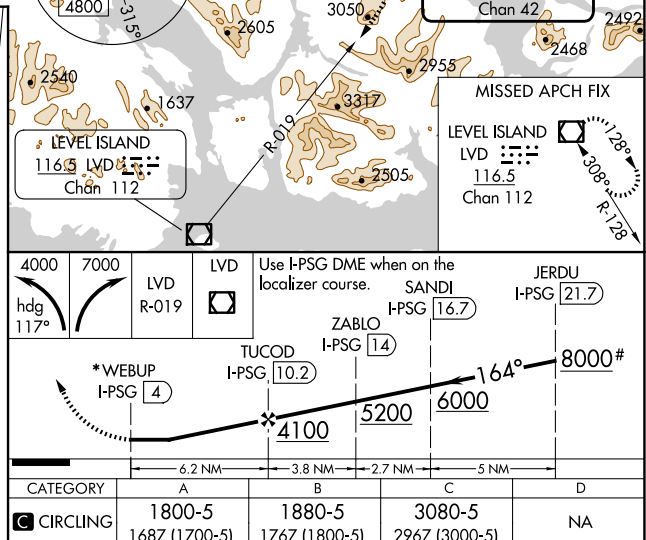
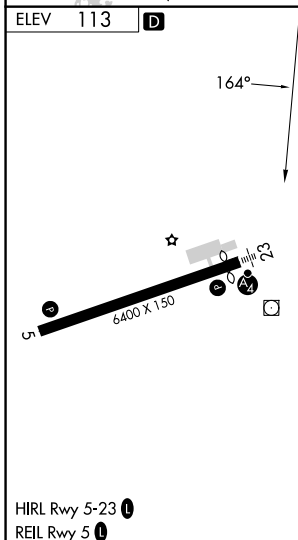
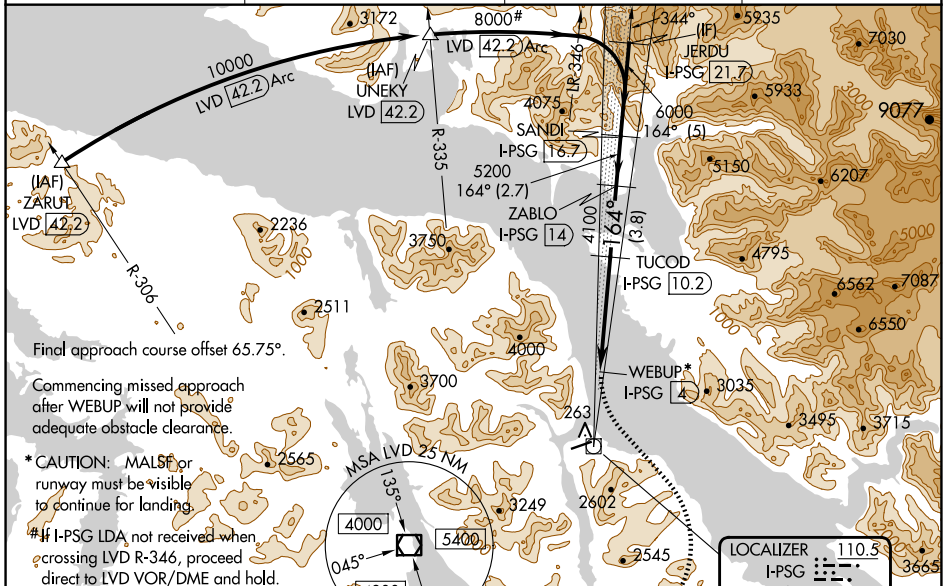
LDA-D
PETERSBURG JAMES A JOHNSON (PSG) (PAPG)

DME required.

V Circling NA southeast of Rwy 5-23. Inop table does not apply.
A Circling Rwy 5 NA at night. When local altimeter setting not received, use PSG/PAPG altimeter setting and increase all MDAs 80 feet.
38 -10°C

MISSED APPROACH: Climbing left turn to 4000 on heading 117° then climbing right turn to 7000 on LVD VOR/DME R-019 to LVD VOR/DME and hold, continue climb-in-hold to 7000.

AWOS-3P 125.8	ANCHORAGE CENTER 118.0	SITKA RADIO 122.35	CTAF 122.5
-------------------------	----------------------------------	------------------------------	----------------------



AK, 20 FEB 2025 to 17 APR 2025

AK, 20 FEB 2025 to 17 APR 2025