

APP CRS <b>166°</b>	Rwy ldg TDZE Apt Elev	<b>N/A</b> <b>N/A</b> <b>113</b>
------------------------	-----------------------------	--

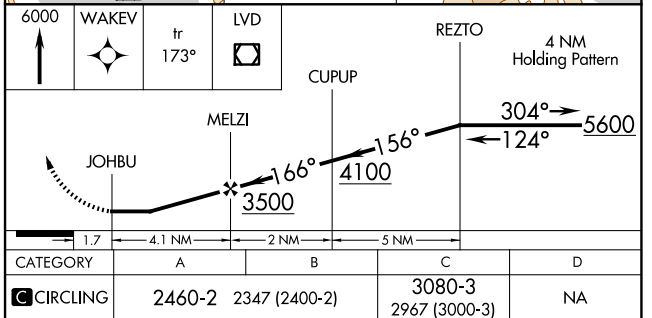
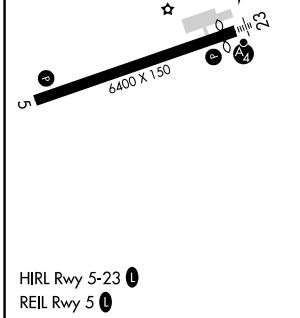
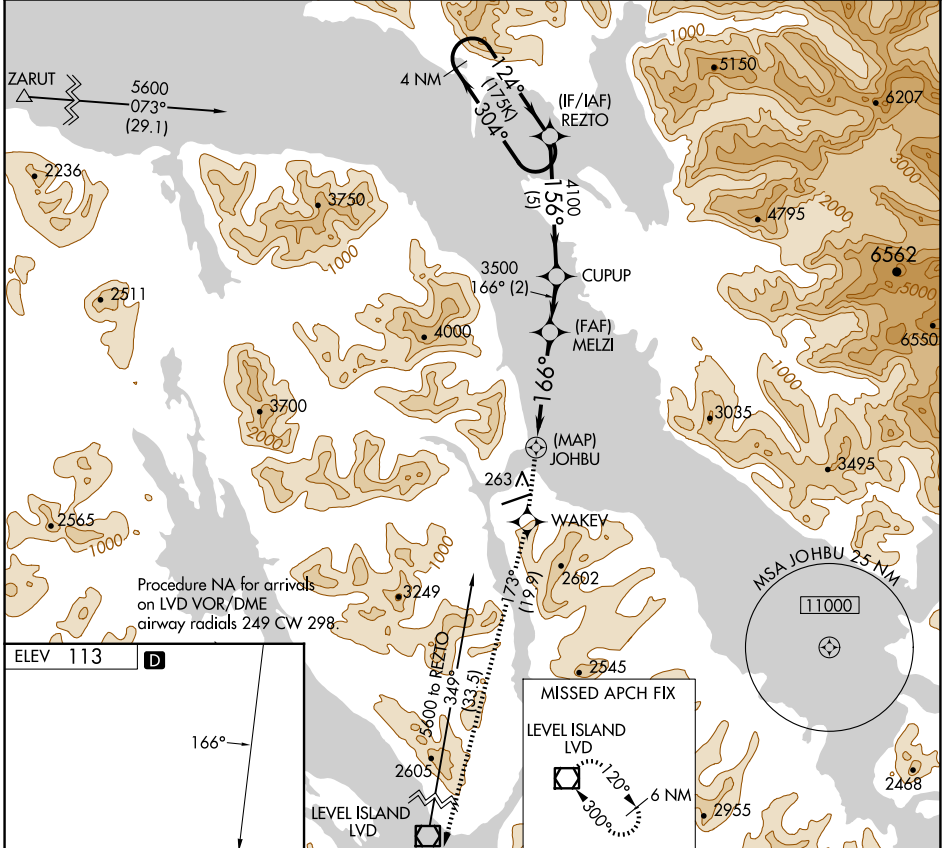
# RNAV (GPS)-B

## PETERSBURG JAMES A JOHNSON (PSG) (PAPG)

**⚠** When local altimeter setting not received, use Wrangell altimeter setting and increase all MDA 80 feet. Circling **-10°C** NA southeast of Rwy 5-23. DME/DME RNP-0.3 NA.

**MISSSED APPROACH:** Climb to 6000 direct WAKEV and on track 173° to LVD VOR/DME and hold, continue climb-in-hold to 6000.

AWOS-3P <b>125.8</b>	ANCHORAGE CENTER <b>118.0</b>	SITKA RADIO <b>122.35</b>	CTAF <b>122.5</b>
-------------------------	----------------------------------	------------------------------	----------------------



HIRL Rwy 5-23	PETERSBURG JAMES A JOHNSON (PSG) (PAPG)		
REIL Rwy 5	56°48'N-132°57'W		
	<b>RNAV (GPS)-B</b>		

AK, 20 FEB 2025 to 17 APR 2025

AK, 20 FEB 2025 to 17 APR 2025