

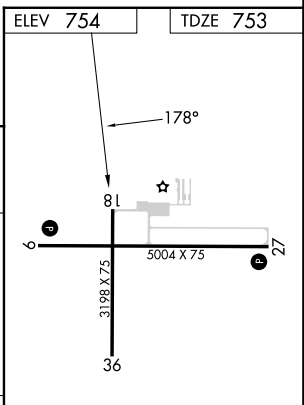
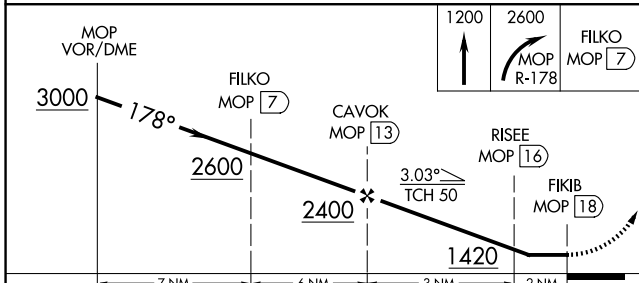
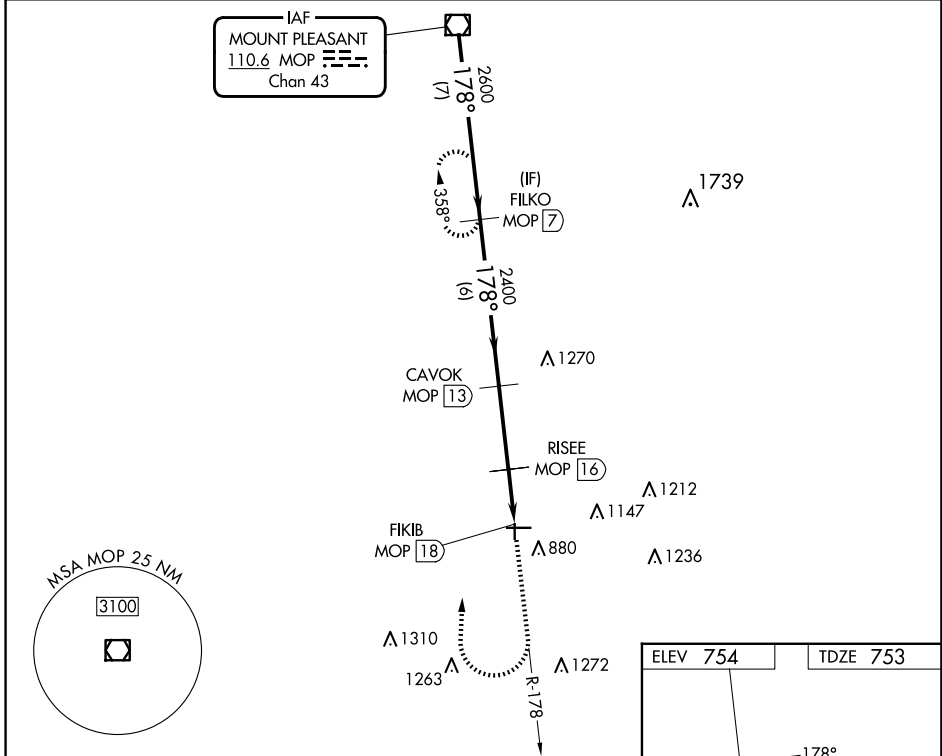
VOR/DME MOP <b>110.6</b> Chan <b>43</b>	APP CRS <b>178°</b>	Rwy ldg <b>3198</b> TDZE <b>753</b> Apt Elev <b>754</b>
-----------------------------------------------	------------------------	---------------------------------------------------------------

**VOR RWY 18**  
GRATIOT COMMUNITY (AMN)

**⚠ NA** Night landing: Rwy 18, 36 NA. DME required.  
Straight-in Rwy 18 NA at night, Circling Rwy 18, 36 NA at night. Rwy 18 helicopter visibility reduction below 1 SM NA.

**MISSED APPROACH:** Climb to 1200 then climbing right turn to 2600 on MOP VOR/DME R-178 direct FILKO/MOP VOR/DME 7 DME and hold.

AWOS-3P <b>124.175</b>	GREAT LAKES APP CON* <b>126.45 235.625</b>	UNICOM <b>122.8 (CTAF) 0</b>
---------------------------	-----------------------------------------------	---------------------------------



CATEGORY	A	B	C	D
S-18	1140-1	387 (400-1)	1140-1¼ 387 (400-1¼)	NA
CIRCLING	1180-1 426 (500-1)	1220-1 466 (500-1)	1460-2 706 (800-2)	NA

REIL Rwy 9 and 27 0  
MRL Rwy 9-27 and 18-36 0

EC-1, 20 FEB 2025 to 20 MAR 2025

EC-1, 20 FEB 2025 to 20 MAR 2025