

WAAS CH 56399 W36A	APP CRS 001°	Rwy Idg 4718 TDZE 330 Apt Elev 331
--	------------------------	---

RNAV (GPS) RWY 36

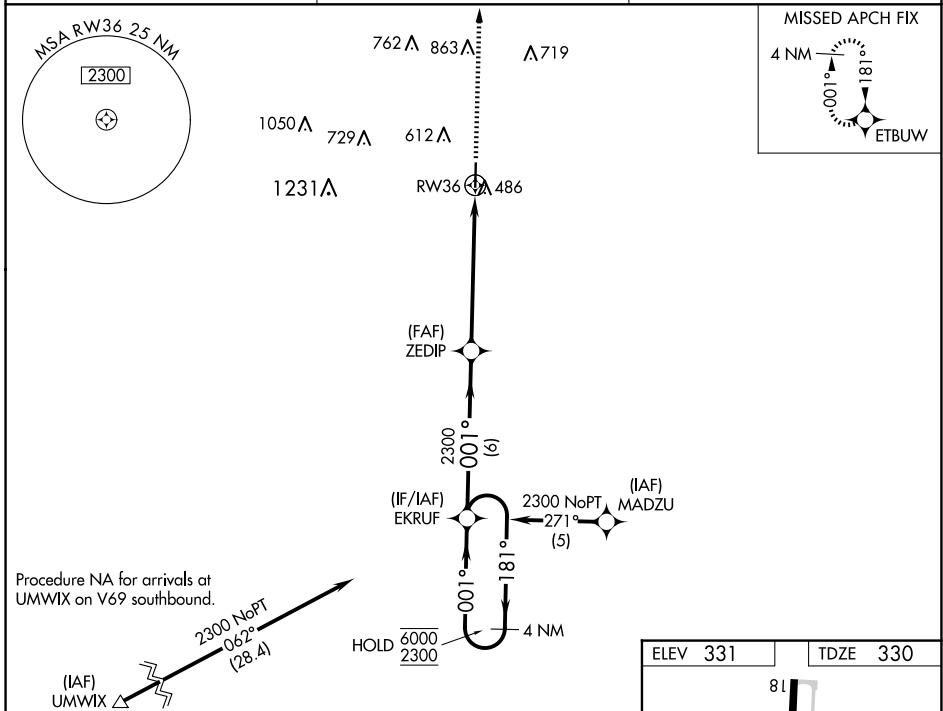
POPLAR BLUFF RGNL BUSINESS (POB)

RNP APCH-GPS.

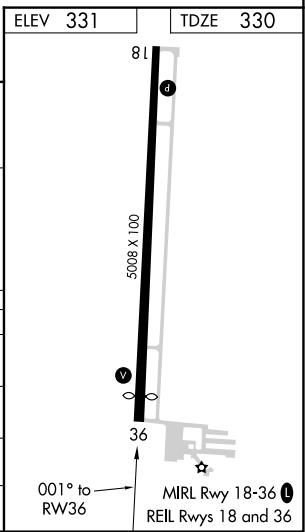
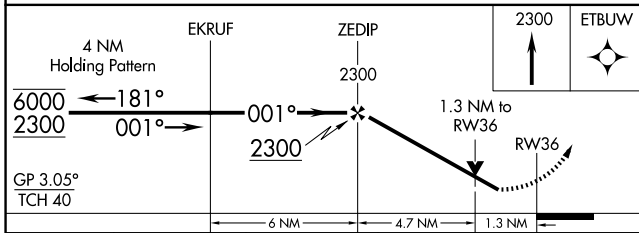
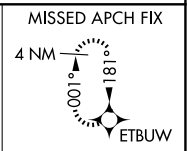
▼ Rwy 36 helicopter visibility reduction below 3/4 SM NA.
▲ For uncompensated Baro-VNAV systems, LNAV/VNAV NA below -23°C or above 54°C.

MISSED APPROACH: Climb to 2300 direct ETBUW and hold.

ASOS 124.225	MEMPHIS CENTER 120.075 289.4	UNICOM 123.0 (CTAF) 0
------------------------	--	---------------------------------



Procedure NA for arrivals at UMWIX on V69 southbound.



CATEGORY	A	B	C	D
LPV DA		669-1	339 (400-1)	
LNAV/VNAV DA		773-1 3/8	443 (500-1 3/8)	
LNAV MDA	780-1	450 (500-1)	780-1 3/8	450 (500-1 3/8)
CIRCLING	840-1 509 (600-1)	920-1 589 (600-1)	920-1 1/2 589 (600-1 1/2)	980-2 649 (700-2)

NC-3, 20 FEB 2025 to 20 MAR 2025

NC-3, 20 FEB 2025 to 20 MAR 2025