

WAAS CH <b>93733</b> <b>W06A</b>	APP CRS <b>063°</b>	Rwy Idg <b>5835</b> TDZE <b>81</b> Apt Elev <b>86</b>
--	------------------------	---

# RNAV (GPS) RWY 6

OCEAN COUNTY (MJX)

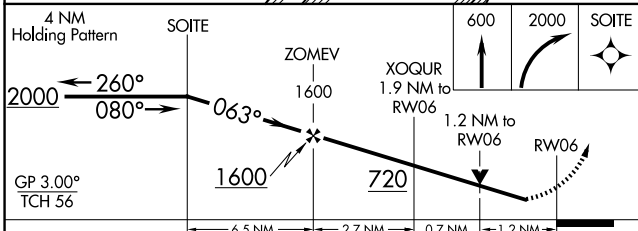
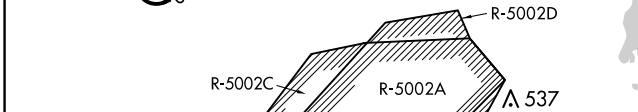
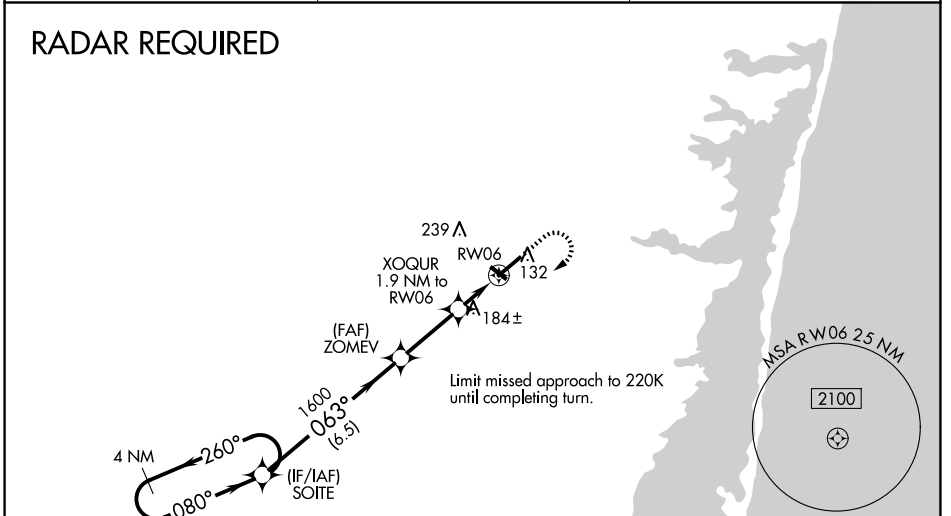
RNP APCH - GPS.

**NA** Circling Rwy 14, 32 NA at night. For uncompensated Baro-VNAV systems, LNAV/VNAV NA below -15°C or above 54°C. Inop table does not apply to LPV. For inop ALS, increase LNAV/VNAV all Cats and LNAV Cats A/B visibility to 1. When local altimeter setting not received, use Mc Guire Fld (Joint Base Mc Guire Dix Lakehurst) altimeter setting and increase all DA 41 feet and all MDA 60 feet; increase LNAV Cats C/D visibility 1/8 mile and Circling Cat D visibility 1/4 mile. For inop ALS when using Mc Guire Fld (Joint Base Mc Guire Dix Lakehurst) altimeter setting, increase LPV all Cats visibility to 7/8, LNAV/VNAV all Cats visibility to 1 1/8, LNAV Cats A/B visibility to 1, and LNAV Cats C/D visibility to 1 3/8. Rwy 6 helicopter visibility reduction below 3/4 SM NA. VDP and Baro-VNAV NA when using Mc Guire Fld (Joint Base Mc Guire Dix Lakehurst) altimeter setting.

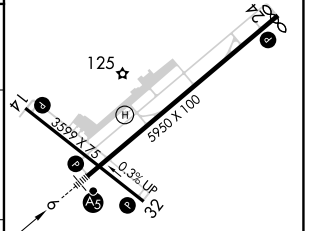
**MALS**

**MISSED APPROACH:** Climb to 600 then climbing right turn to 2000 direct SOITE and hold.

AWOS-3PT <b>119.875</b>	MC GUIRE APP CON <b>126.475 363.8</b>	UNICOM <b>122.7 (CTAF) 1</b>
----------------------------	--	---------------------------------



ELEV 86	<b>D</b>	TDZE 81
---------	----------	---------



CATEGORY	A	B	C	D
LPV DA	331-3/4		250 (300-3/4)	
LNAV/VNAV DA	405-3/4		324 (400-3/4)	
LNAV MDA	520-3/4 439 (500-3/4)		520-7/8 439 (500-7/8)	
<b>C</b> CIRCLING	540-1 454 (500-1)	560-1 474 (500-1)	580-1 1/2 494 (500-1 1/2)	700-2 614 (700-2)

MIRL Rwy 14-32 **1**  
HIRL Rwy 6-24 **1**  
REIL Rws 14, 24 and 32 **1**

NE-2, 20 FEB 2025 to 20 MAR 2025

NE-2, 20 FEB 2025 to 20 MAR 2025