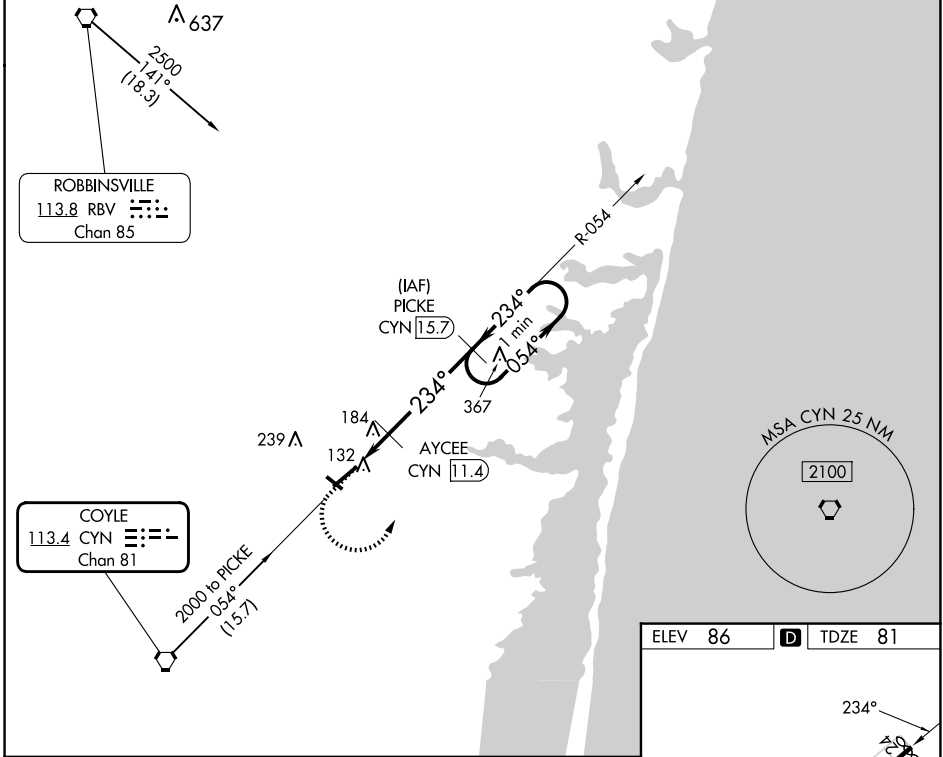


VORTAC CYN <b>113.4</b> Chan <b>81</b>	APP CRS <b>234°</b>	Rwy Idg TDZE <b>81</b> Apt Elev <b>86</b>	<b>5835</b>
----------------------------------------------	------------------------	----------------------------------------------------	-------------

# VOR RWY 24

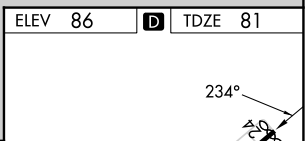
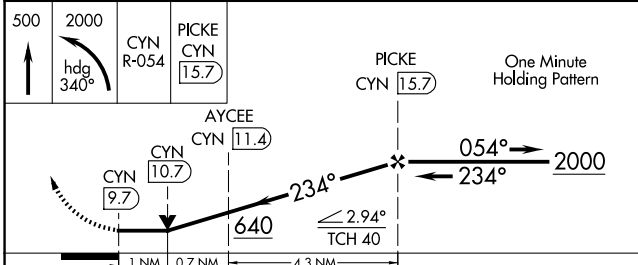
OCEAN COUNTY (MJX)

DME required for procedure entry. DME required.		MISSED APPROACH: Climb to 500 then climbing left turn to 2000 on heading 340° and on CYN VORTAC R-054 to PICKE/CYN 15.7 DME and hold.
Rwy 24 helicopter visibility reduction below 3/4 SM NA. Circling Rwy 14, 32 NA at night.		
AWOS-3PT <b>119.875</b>	MC GUIRE APP CON <b>126.475 363.8</b>	UNICOM <b>122.7 (CTAF) 0</b>



NE-2, 20 FEB 2025 to 20 MAR 2025

NE-2, 20 FEB 2025 to 20 MAR 2025



ELEV 86	<b>D</b> TDZE 81			
500	2000	CYN R-054	PICKE CYN 15.7	One Minute Holding Pattern
hdg 340°				
		AYCEE CYN 11.4		
		CYN 9.7	CYN 10.7	
		234°	054°	2000
		640	234°	
		≤ 2.94%	TCH 40	
CATEGORY	A	B	C	D
S-24		440-1	359 (400-1)	
<b>C</b> CIRCLING	540-1 454 (500-1)	560-1 474 (500-1)	580-1½ 494 (500-1½)	700-2 614 (700-2)

MIRL Rwy 14-32
HIRL Rwy 6-24
REIL Rws 14, 24 and 32