

WAAS CH 62823 W21A	APP CRS 206°	Rwy Idg 5502
		TDZE 315
		Apt Elev 315

RNAV (GPS) RWY 21

SIKESTON MEML MUNI (SIK)

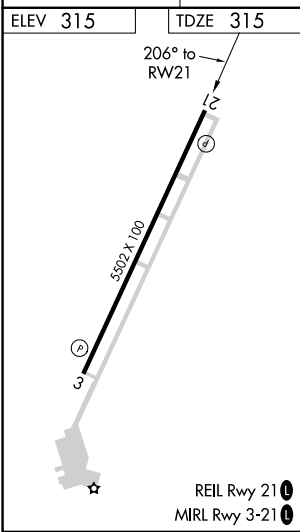
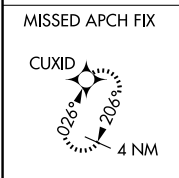
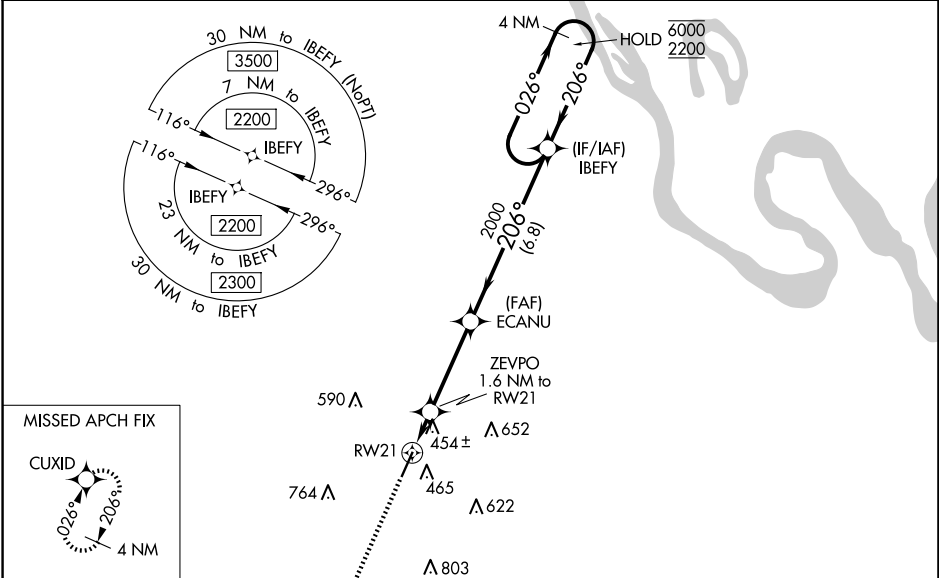
RNP APCH.

▽ Rwy 21 helicopter visibility reduction below ¼ SM NA. Baro-VNAV NA when using Cape Girardeau altimeter setting. For uncompensated Baro-VNAV systems, LNAV/VNAV NA below -15°C or above 54°C. When local altimeter setting not received, use Cape Girardeau altimeter setting and increase all DA 49 feet and all MDA 60 feet. Increase LNAV and Circling Cat C/D visibility ¼ SM.

△NA

MISSED APPROACH: Climb to 2000 direct CUXID and hold.

AWOS-3 119.175	MEMPHIS CENTER 133.65 292.15	UNICOM 122.8 (CTAF) 0
--------------------------	--	---------------------------------



ELEV 315	TDZE 315	CUXID		IBEFY	4 NM Holding Pattern
*LNAV only		ZEVPO 1.6 NM to RWY 21	ECANU 2000	2000	6000 / 2200
RWY 21		860*	206°	206°	GP 3.00° TCH 45
CATEGORY		A	B	C	D
LPV DA	565-1 250 (300-1)				
LNAV/VNAV DA	761-1 3/8 446 (500-1 3/8)				
LNAV MDA	720-1 405 (500-1)		720-1 1/8 405 (500-1 1/8)		
CIRCLING	840-1 525 (600-1)	860-1 545 (600-1)	1080-2 1/4 765 (800-2 1/4)	1160-2 3/4 845 (900-2 3/4)	

NC-3, 20 FEB 2025 to 20 MAR 2025

NC-3, 20 FEB 2025 to 20 MAR 2025