

WAAS CH 70427 W27A	APP CRS 274°	Rwy Idg TDZE Apt Elev	4003 1312 1312
--	------------------------	-----------------------------	---

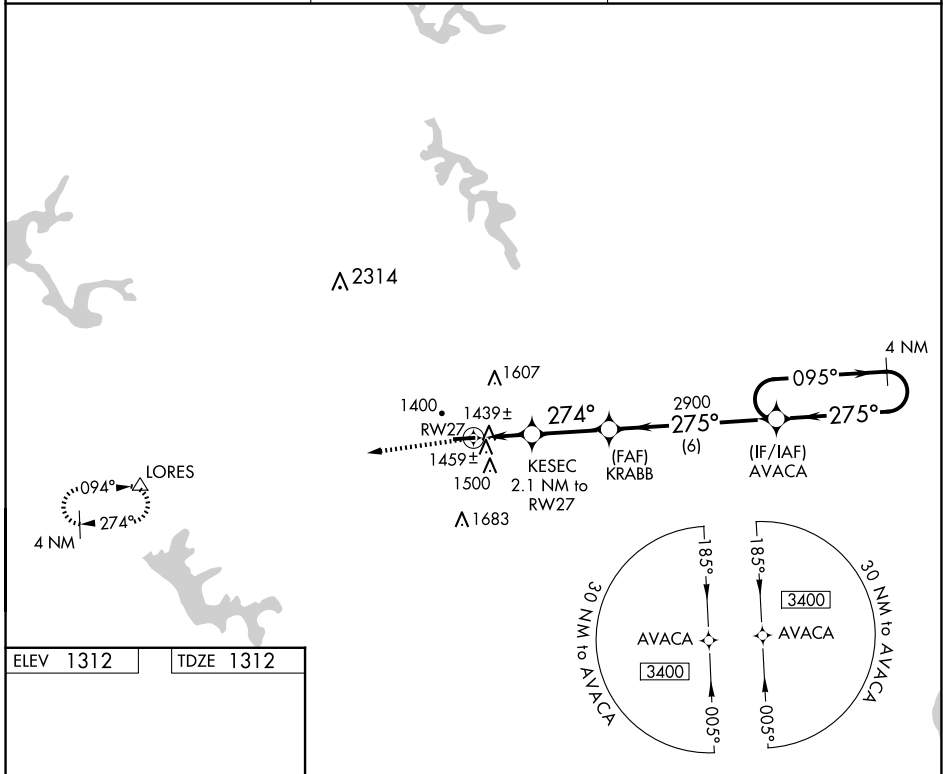
RNAV (GPS) RWY 27

BARNESVILLE/BRADFIELD (6G5)

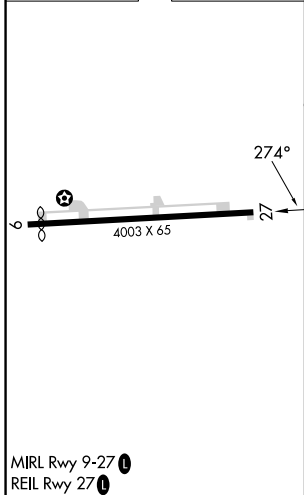
NA DME/DME RNP-0.3 NA. Procedure NA at night. Visibility reduction by helicopters NA. Use Wheeling, WV altimeter setting; When not received use Washington, PA altimeter setting and increase all MDA 40 feet.

MISSED APPROACH: Climbing left turn to 3000 direct LORES and hold.

HLG ASOS 127.375	CLEVELAND CENTER 126.95 239.30	UNICOM 123.0 (CTAF)
----------------------------	--	-------------------------------



ELEV 1312	TDZE 1312
------------------	------------------



3000	LORES	AVACA	4 NM Holding Pattern
274°	△		
274°	KESEEC	KRABB	AVACA
2.1 NM to RWY 27	≤ 3.00° TCH 40	2900	3400
2020	274°	275°	095°
2.1 NM	2.8 NM	6 NM	← 275°
CATEGORY	A	B	C
LP MDA	1780-1	468 (500-1)	NA
LNAV MDA	1800-1	488 (500-1)	NA
CIRCLING	1880-1 568 (600-1)	1940-1 628 (700-1)	NA

MIRL Rwy 9-27
REIL Rwy 27

EC-2, 20 FEB 2025 to 20 MAR 2025

EC-2, 20 FEB 2025 to 20 MAR 2025