

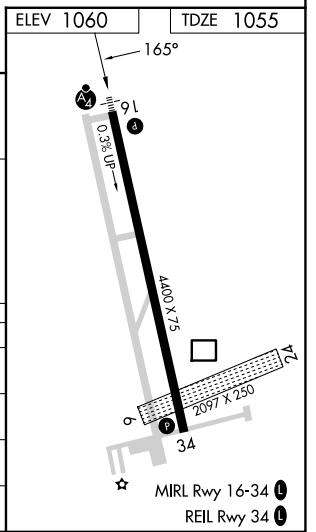
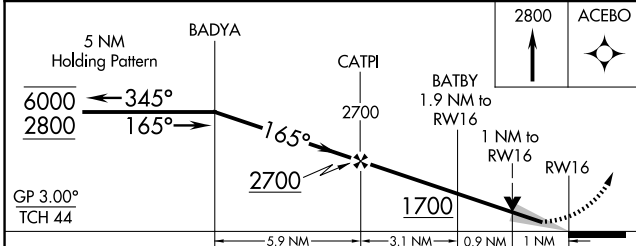
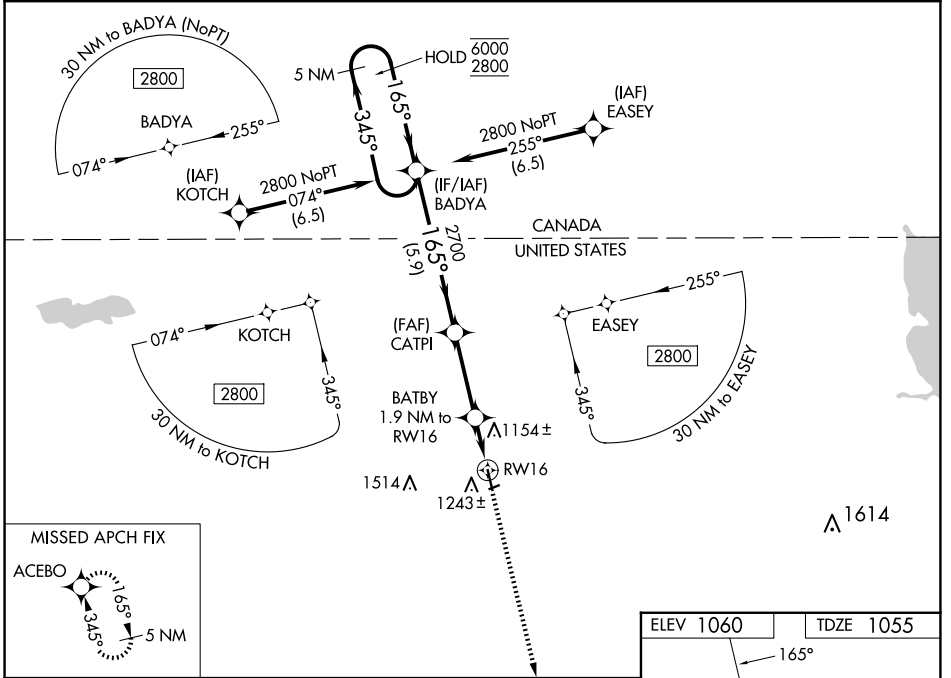
WAAS CH 56304 W16A	APP CRS 165°	Rwy Idg TDZE Apt Elev	4400 1055 1060
----------------------------------------	------------------------	-----------------------------	-------------------------------------------

RNAV (GPS) RWY 16

ROSEAU MUNI/RUDY BILLBERG FLD (R.O.X)

RNP APCH - GPS.	MALSF	MISSED APPROACH: Climb to 2800 direct ACEBO and hold.
<p>⚠ Circling NA to Rwy 6 and 24. For uncompensated Baro-VNAV systems, LNAV/VNAV NA below -17°C or above 54°C. For inop ALS, increase LNAV/VNAV visibility to 7/8 SM. Inop table does not apply to LPV all Cats.</p>		

AWOS-3 118.075	MINNEAPOLIS CENTER 134.75 251.1	UNICOM 122.8 (CTAF)
--------------------------	-------------------------------------------	-------------------------------



CATEGORY	A	B	C	D
LPV DA		1255-3/4	200 (200-3/4)	
LNAV/VNAV DA		1330-3/4	275 (300-3/4)	
LNAV MDA		1420-3/4	365 (400-3/4)	
C CIRCLING	1600-1	540 (600-1)	1840-2 1/4 780 (800-2 1/4)	1840-2 1/2 780 (800-2 1/2)

NC-1, 20 FEB 2025 to 20 MAR 2025

NC-1, 20 FEB 2025 to 20 MAR 2025