

ROSEAU, MINNESOTA

AL-5635 (FAA)

23334

WAAS CH <b>99404</b> <b>W34A</b>	APP CRS <b>345°</b>	Rwy Idg TDZE Apt Elev	<b>4400</b> <b>1060</b> <b>1060</b>
--	------------------------	-----------------------------	---

# RNAV (GPS) RWY 34

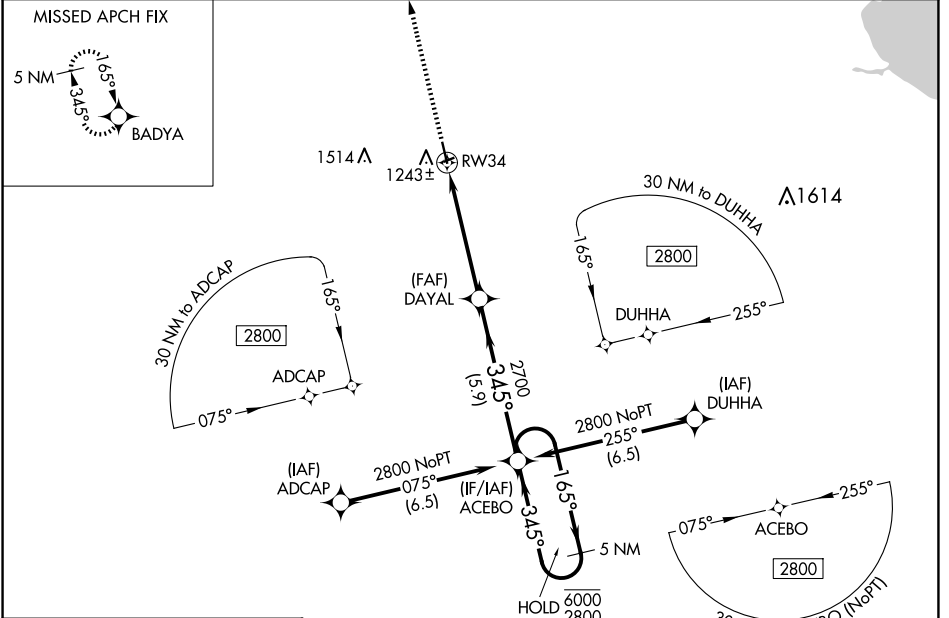
ROSEAU MUNI/RUDY BILLBERG FLD (R.O.X)

RNP APCH - GPS.

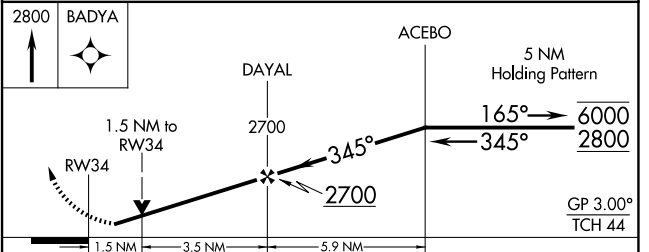
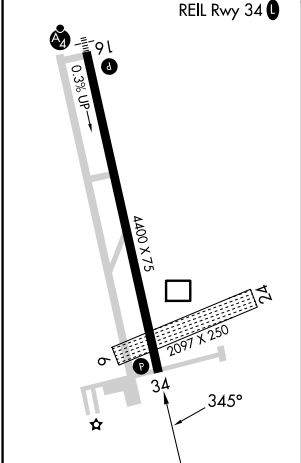
**⚠** Circling NA to Rwys 6 and 24. Rwy 34 helicopter visibility reduction below  $\frac{3}{4}$  SM NA. For uncompensated Baro-VNAV systems, LNAV/VNAV NA below -17°C or above 54°C.

MISSED APPROACH: Climb to 2800 direct BADYA and hold.

AWOS-3 <b>118.075</b>	MINNEAPOLIS CENTER <b>134.75 251.1</b>	UNICOM <b>122.8</b> (CTAF) <b>📻</b>
--------------------------	---	--



ELEV 1060	TDZE 1060
-----------	-----------



CATEGORY	A	B	C	D
LPV DA	1310- $\frac{3}{4}$ 250 (300- $\frac{3}{4}$ )			
LNAV/VNAV DA	1457-1 $\frac{1}{8}$ 397 (400-1 $\frac{1}{8}$ )			
LNAV MDA	1580-1	520 (600-1)	1580-1 $\frac{3}{8}$	520 (600-1 $\frac{3}{8}$ )
<b>📻</b> CIRCLING	1600-1	540 (600-1)	1840-2 $\frac{1}{4}$ 780 (800-2 $\frac{1}{4}$ )	1840-2 $\frac{1}{2}$ 780 (800-2 $\frac{1}{2}$ )

ROSEAU, MINNESOTA  
Amdt 1 03NOV22

48°51'N-95°42'W

# RNAV (GPS) RWY 34

NC-1, 20 FEB 2025 to 20 MAR 2025

NC-1, 20 FEB 2025 to 20 MAR 2025