

|             |          |             |
|-------------|----------|-------------|
| APP CRS     | Rwy Idg  | <b>3889</b> |
| <b>167°</b> | TDZE     | <b>1165</b> |
|             | Apt Elev | <b>1165</b> |

# RNAV (GPS) RWY 15

BRIDGEWATER AIR PARK (VBW)

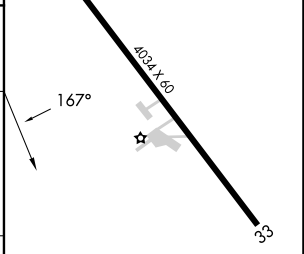
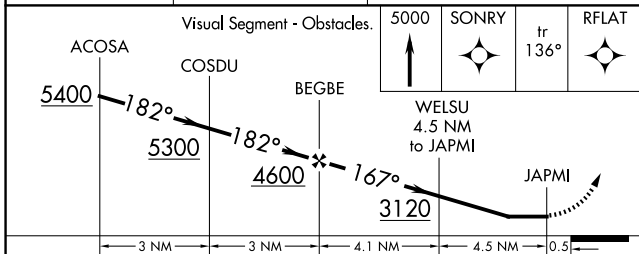
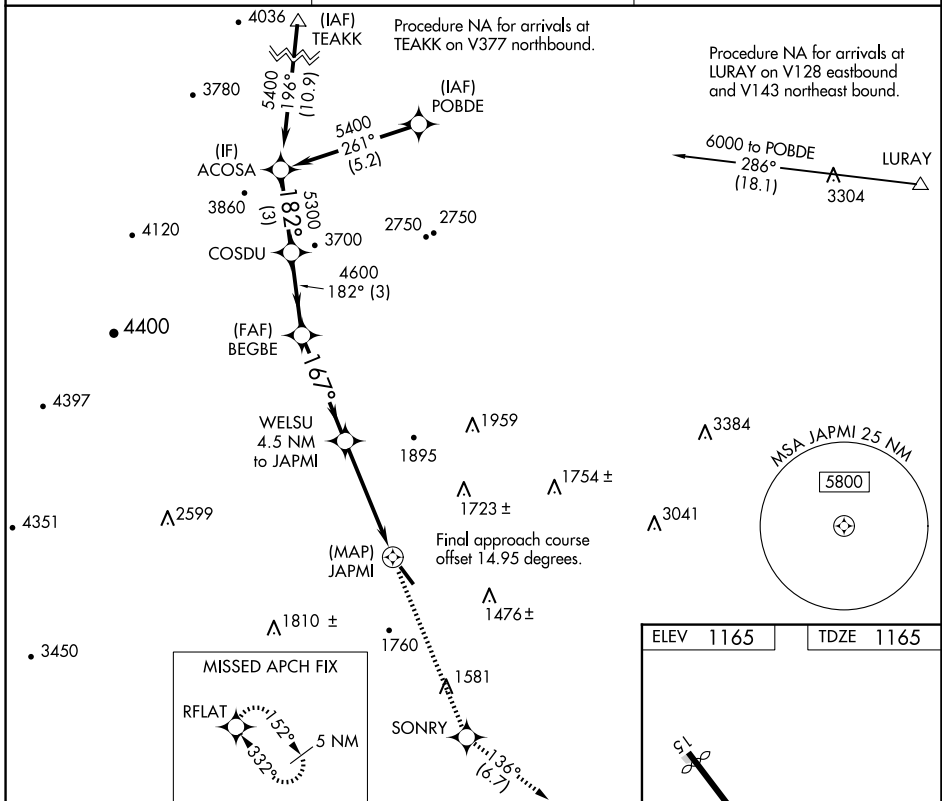
**NA** DME/DME RNP-0.3 NA. Helicopter visibility reduction below 3/4 SM NA. When local altimeter setting not received, use Staunton/Waynesboro/Harrisonburg altimeter setting and increase all MDA 40 feet and visibility Cat B 1/4 mile.

**MISSED APPROACH:** Climb to 5000 direct SONRY and on track 136° to RFLAT and hold, continue climb-in-hold to 5000.

AWOS-3  
**119.55**

POTOMAC APP CON  
**132.85 323.125**

UNICOM  
**122.7 (CTAF) 0**



|          |            |                  |   |    |
|----------|------------|------------------|---|----|
| CATEGORY | A          | B                | C | D  |
| RNAV MDA | 2080-1 1/4 | 915 (1000-1 1/4) |   | NA |
| CIRCLING | 2080-1 1/4 | 915 (1000-1 1/4) |   | NA |

MIRL Rwy 15-33 0

NE-3, 20 FEB 2025 to 20 MAR 2025

NE-3, 20 FEB 2025 to 20 MAR 2025