

NDB TII <b>269</b>	APP CRS <b>250°</b>	Rwy Idg TDZE Apt Elev	<b>4000</b> <b>785</b> <b>786</b>
-----------------------	------------------------	-----------------------------	---

# NDB RWY 24

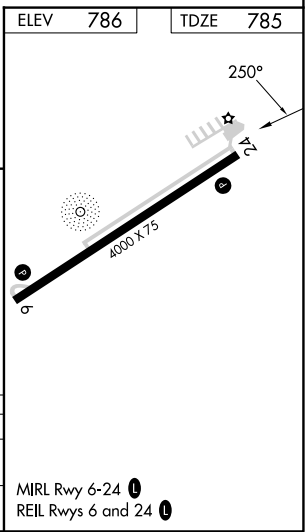
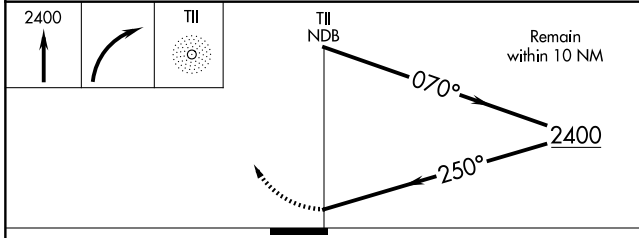
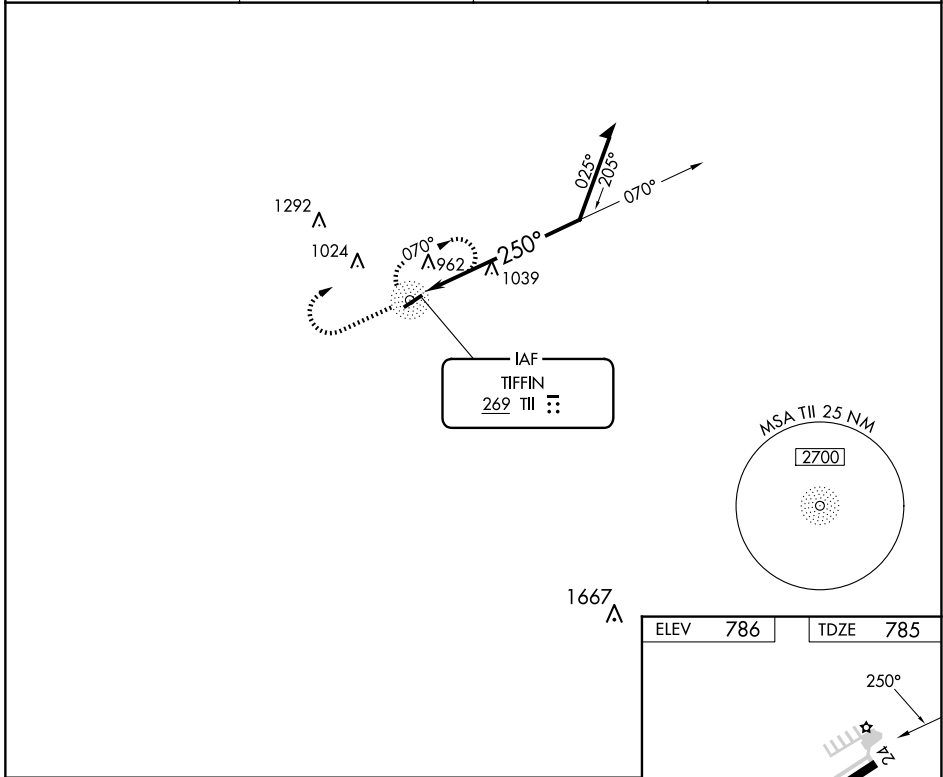
SENECA COUNTY (16G)

**▽** Rwy 24 helicopter visibility reduction below 1 SM NA. When local altimeter setting not received, use Findlay altimeter setting and increase all MDAs 60 feet, increase S-24 Cat C visibility  $\frac{1}{8}$  SM, and Circling Cat D visibility  $\frac{1}{4}$  SM. Straight-in Rwy 24 NA at night, Circling Rwy 24 NA at night.

**△ NA**

MISSED APPROACH: Climb to 2400 then right turn direct TII NDB and hold.

AWOS-3 <b>127.175</b>	FDY ASOS <b>132.85</b>	TOLEDO APP CON <b>120.8 317.55</b>	UNICOM <b>123.0</b> (CTAF) <b>📞</b>
--------------------------	---------------------------	---------------------------------------	--



CATEGORY	A	B	C	D
S-24	1460-1	675 (700-1)	1460-1 $\frac{1}{8}$ 675 (700-1 $\frac{1}{8}$ )	1460-2 675 (700-2)
CIRCLING	1460-1	674 (700-1)	1460-2 674 (700-2)	1560-2 $\frac{1}{2}$ 774 (800-2 $\frac{1}{2}$ )

EC-2, 20 FEB 2025 to 20 MAR 2025

EC-2, 20 FEB 2025 to 20 MAR 2025