

VORTAC BNA <b>114.1</b> Chan <b>88</b>	APP CRS <b>045°</b>	Rwy Idg TDZE Apt Elev <b>583</b>	<b>N/A</b> <b>N/A</b> <b>583</b>
--	------------------------	---	--

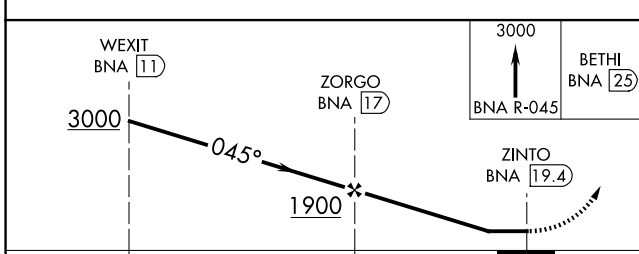
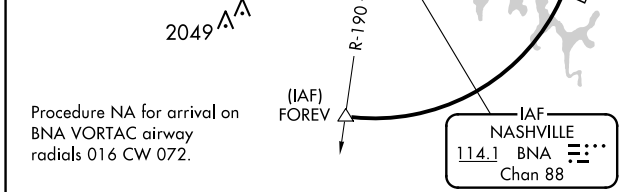
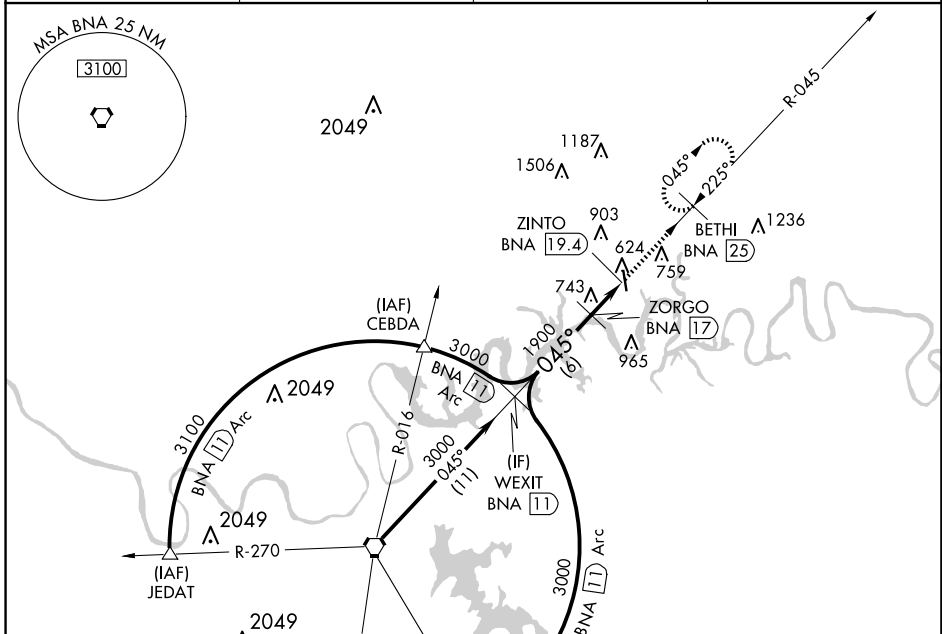
**VOR-A**  
MUSIC CITY EXEC (XNX)

DME required.

When local altimeter setting not received, use Nashville Intl altimeter setting and increase all MDA 60 feet, increase Cat C/D visibility 1/4 mile.

MISSED APPROACH: Climb to 3000 on BNA VORTAC R-045 to BETHI/25 DME and hold, continue climb-in-hold to 3000.

AWOS-3 <b>132.725</b>	NASHVILLE APP CON <b>118.4 360.7</b>	GCO <b>135.075</b>	UNICOM <b>123.05</b> (CTAF) <b>0</b>
--------------------------	---	-----------------------	---



CATEGORY	A	B	C	D	MIRL Rwy 17-35 <b>0</b> REIL Rwy 17 and 35 <b>0</b>
<b>CIRCLING</b>	1100-1 517 (600-1)	1120-1 537 (600-1)	1240-1 3/4 657 (700-1 3/4)	1280-2 1/4 697 (700-2 1/4)	

SE-1, 20 FEB 2025 to 20 MAR 2025

SE-1, 20 FEB 2025 to 20 MAR 2025