

# RNAV (GPS) RWY 18

NACOGDOCHES A L MANGHAM JR RGNL (OCH)

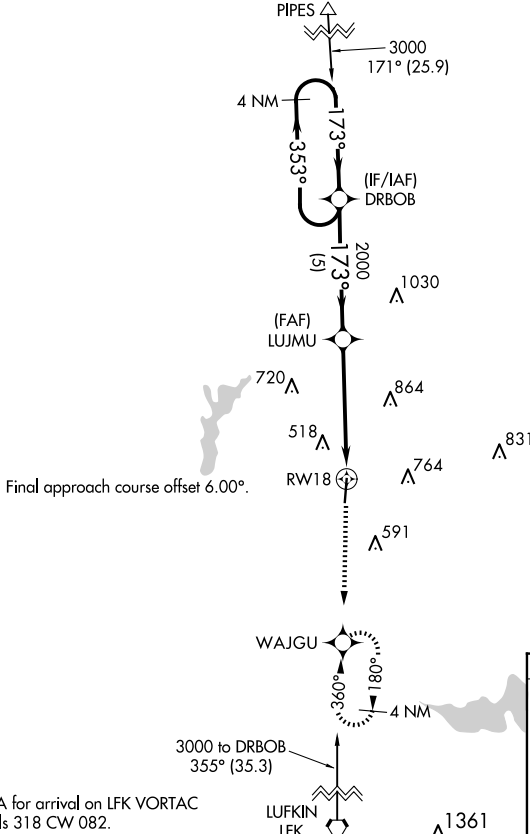
APP CRS	Rwy ldg	<b>5000</b>
<b>173°</b>	TDZE	<b>343</b>
	Apt Elev	<b>343</b>

RNP APCH-GPS.

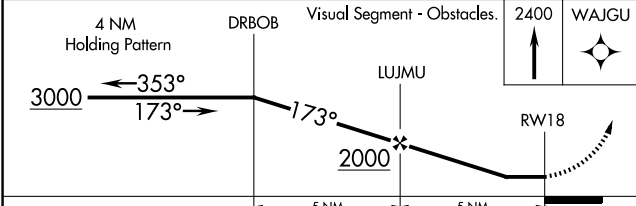
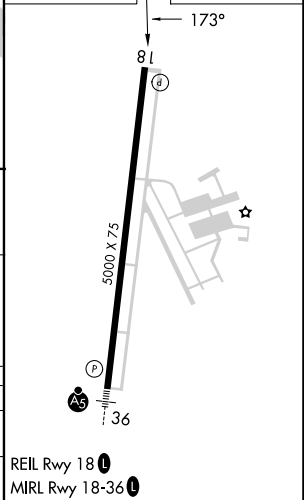
**▼** Rwy 18 helicopter visibility reduction below 1 SM NA. When local altimeter setting not received, use Lufkin altimeter setting and increase all MDA 60 feet and visibility LNAV Cat C and Circling Cat C ¼ SM.

MISSED APPROACH: Climb to 2400 direct WAJGU and hold.

AWOS-3PT <b>135.625</b>	HOUSTON CENTER <b>125.175 285.575</b>	UNICOM <b>123.0(CTAF) 0</b>
----------------------------	------------------------------------------	--------------------------------



ELEV 343	TDZE 343
----------	----------



CATEGORY	A	B	C	D
LNAV MDA	980-1	637 (700-1)	980-1¾ 637 (700-1¾)	NA
CIRCLING	980-1	637 (700-1)	1080-2 737 (800-2)	NA

# RNAV (GPS) RWY 18

SC-5, 20 FEB 2025 to 20 MAR 2025

SC-5, 20 FEB 2025 to 20 MAR 2025