

APP CRS	Rwy Idg	N/A
109°	TDZE	N/A
	Apt Elev	1510

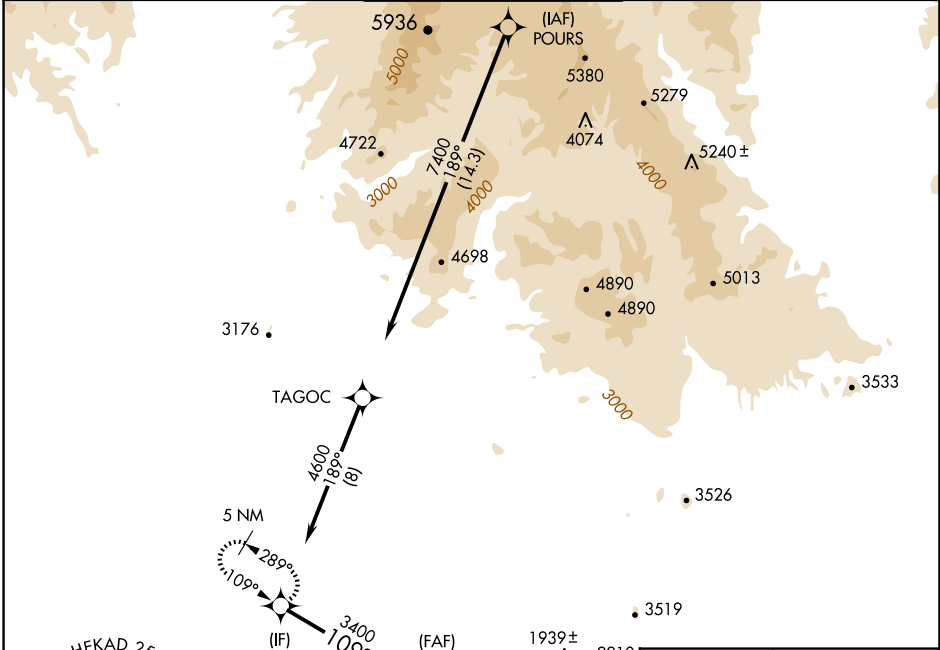
RNAV (GPS)-D

SCOTTSDALE (SDL)

▽ When VGSI inoperative, circling Rwy 21 NA at night. When local altimeter setting not received, use Phoenix Sky Harbor Intl altimeter setting and increase all MDA 100 feet and increase visibility Cat C ¼ SM. DME/DME RNP-0.3 NA.

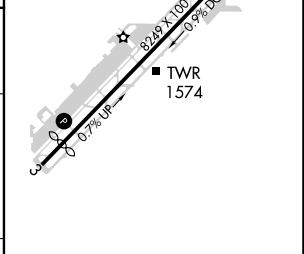
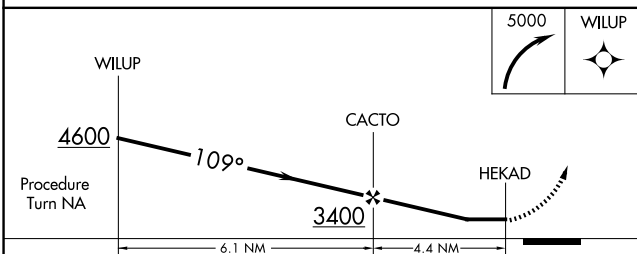
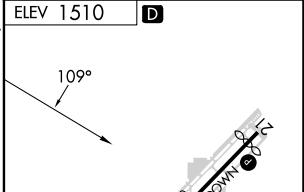
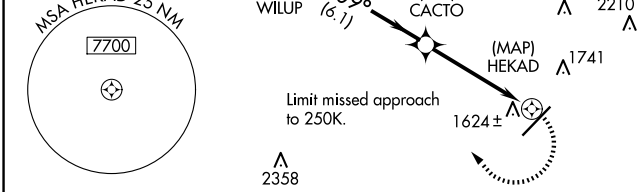
MISSED APPROACH: Climbing right turn to 5000 direct WILUP and hold, continue climb-in-hold to 5000.

ATIS	PHOENIX APP CON	SCOTTSDALE TOWER *	GND CON	CLNC DEL
118.6	120.7 239.0	119.9 (CTAF) 0	121.6	124.8



SW-4, 20 FEB 2025 to 20 MAR 2025

SW-4, 20 FEB 2025 to 20 MAR 2025



CATEGORY	A	B	C	D
CIRCLING	2080-1 570 (600-1)	2100-1 590 (600-1)	2460-2¾ 950 (1000-2¾)	3300-3 1790 (1800-3)

MIRL Rwy 3-21 0
REIL Rwy 3 and 21 0