

# RNAV (RNP) Y RWY 3

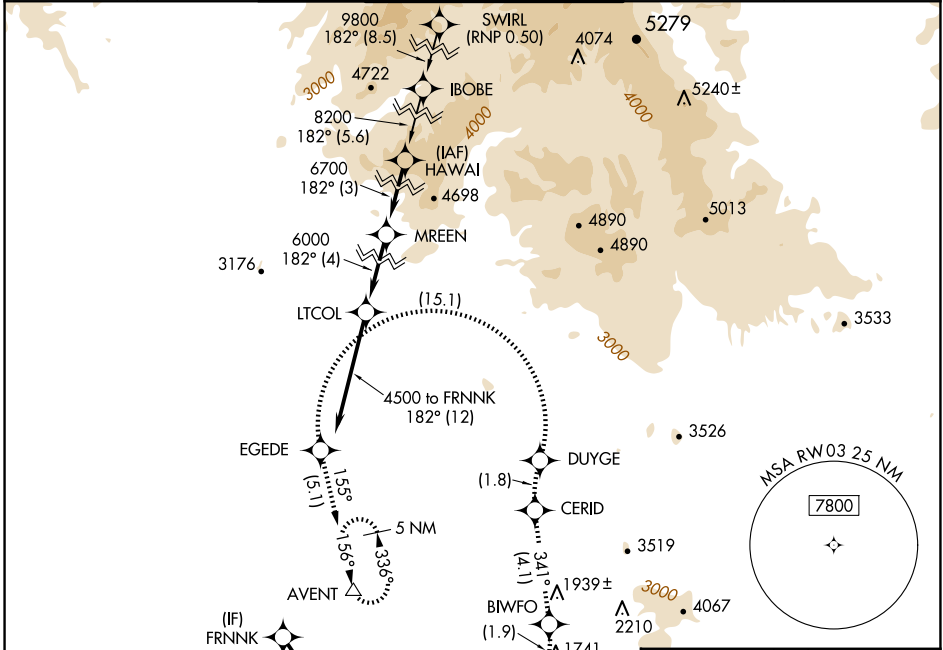
SCOTTSDALE (SDL)

APP CRS	Rwy Idg	<b>7110</b>
<b>032°</b>	TDZE	<b>1470</b>
	Apt Elev	<b>1510</b>

**RF and GPS required. Visibility reduction by helicopters NA.**  
 For uncompensated Baro-VNAV systems, procedure NA below 1°C (31°F) or above 54°C (130°F). When local altimeter setting not received procedure NA. Missed approach requires RNP less than 1.0.

**MISSED APPROACH:** Climb to 5000 via left turn to AFXUR, and via left turn to BIWFO, and via track 341° to CERID, and via right turn to DUYGE, and via left turn to EGEDE, and via track 155° to AVENT and hold.

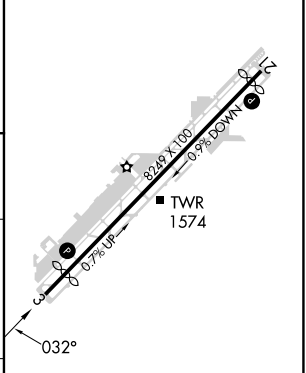
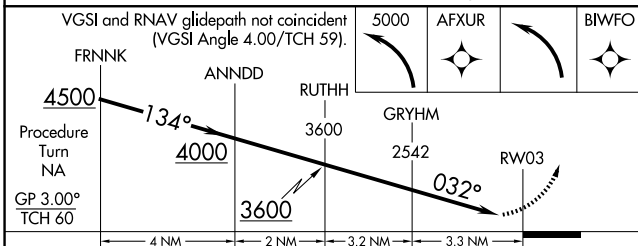
ATIS	PHOENIX APP CON	SCOTTSDALE TOWER*	GND CON	CLNC DEL
<b>118.6</b>	<b>120.7 239.0</b>	<b>119.9 (CTAF) 0</b>	<b>121.6</b>	<b>124.8</b>



SW-4, 20 FEB 2025 to 20 MAR 2025

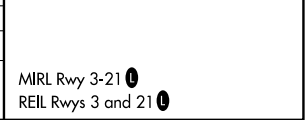
SW-4, 20 FEB 2025 to 20 MAR 2025

ELEV 1510	<b>D</b>	TDZE 1470
-----------	----------	-----------



CATEGORY	A	B	C	D
RNP 0.30 DA	1829-1¼	359 (400-1¼)		NA

**AUTHORIZATION REQUIRED**



MIRL Rwy 3-21 0  
 REIL Rwy 3 and 21 0