

WAAS CH <b>61008</b> <b>W04A</b>	APP CRS <b>038°</b>	Rwy Idg <b>6032</b> TDZE <b>511</b> Apt Elev <b>529</b>
--	------------------------	---

# RNAV (GPS) RWY 4

TALLADEGA MUNI (ASN)

RNP APCH - GPS.

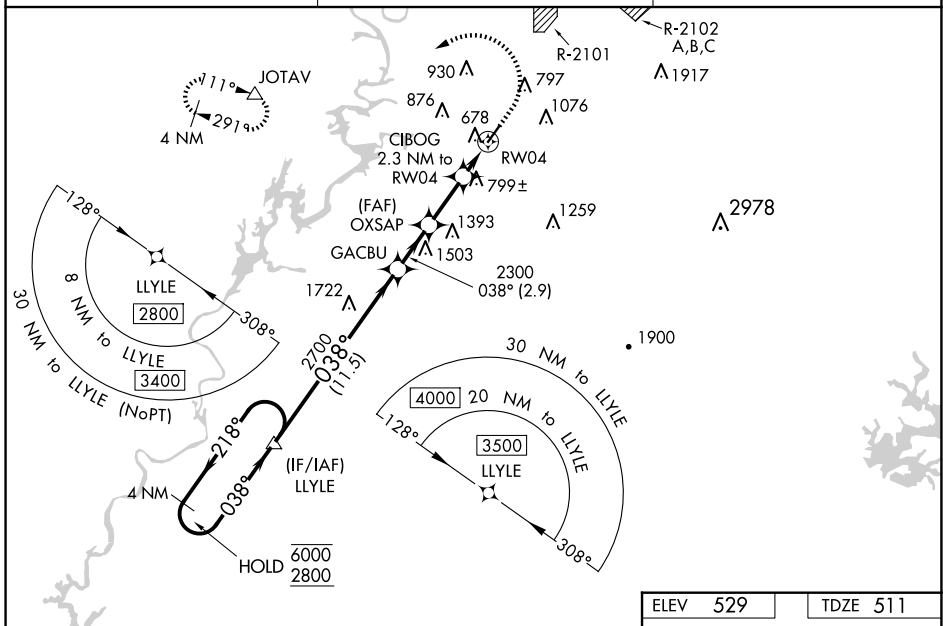
**⚠** For uncompensated Baro-VNAV systems, LNAV/VNAV NA below -16°C or above 54°C.

MISSED APPROACH: Climb to 1300 then climbing left turn to 3700 direct JOTAV and hold, continue climb-in-hold to 3700.

AWOS-3PT  
**118.425**

BIRMINGHAM APP CON  
**132.15 285.45**

UNICOM  
**122.8 (CTAF) 0**



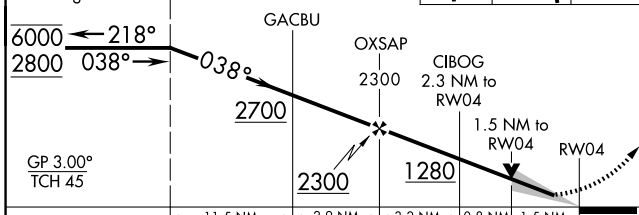
SE-4, 20 FEB 2025 to 20 MAR 2025

SE-4, 20 FEB 2025 to 20 MAR 2025

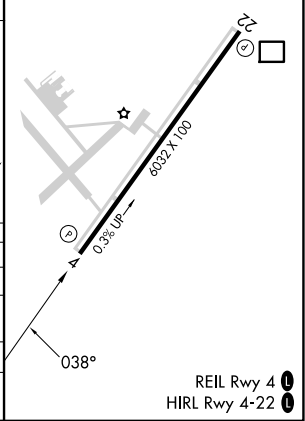
ELEV <b>529</b>	TDZE <b>511</b>
-----------------	-----------------

VGSI and RNAV glidepath not coincident (VGSI Angle 3.00/TCH 65).

1300	3700	JOTAV
↑	↩	△



CATEGORY	A	B	C	D
LPV DA		711-3/4	200 (200-3/4)	
LNAV/VNAV DA		884-1	373 (400-1)	
LNAV MDA	1060-1	549 (600-1)	1060-1 1/8	549 (600-1 1/8)
<b>C</b> CIRCLING	1140-1 611 (700-1)	1180-1 651 (700-1)	1380-2 1/2 851 (900-2 1/2)	1500-3 971 (1000-3)



REIL Rwy 4 **0**  
HIRL Rwy 4-22 **0**