

WAAS CH <b>90238</b> <b>W28A</b>	APP CRS <b>281°</b>	Rwy Idg TDZE Apt Elev	<b>4103</b> <b>796</b> <b>800</b>
--	------------------------	-----------------------------	---

# RNAV (GPS) RWY 28

PLYMOUTH MUNI (C65)

RNP APCH - GPS.

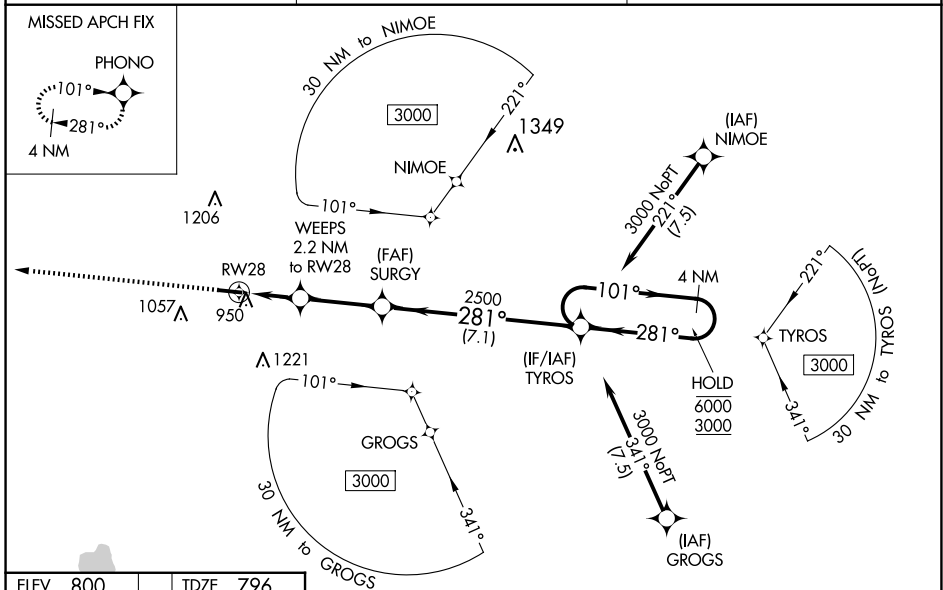
▼ Baro-VNAV NA when using South Bend altimeter setting. Rwy 28 helicopter visibility reduction below 1 SM NA. For uncompensated Baro-VNAV systems, LNAV/VNAV NA below -16°C or above 54°C. When local altimeter setting not received, use South Bend altimeter setting and increase LPV DA to 1154 feet and visibility all Cats ¼ SM; LNAV/VNAV DA to 1240 feet and visibility all Cats ¼ SM, increase all MDAs 60 feet and LNAV visibility Cat C ½ SM, and Circling visibility Cat C ¼ SM. Straight-in Rwy 28 NA at night, Circling Rwy 28 NA at night.

MISSED APPROACH: Climb to 3000 direct PHONO and hold.

AWOS-3  
**133.025**

SOUTH BEND APP CON \*  
**132.05 257.8**

UNICOM  
**122.975 (CTAF) ①**

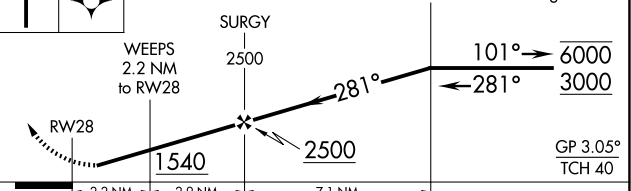
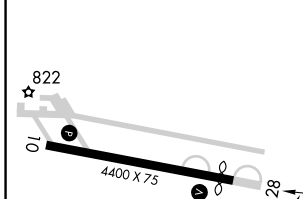


EC-2, 20 FEB 2025 to 20 MAR 2025

EC-2, 20 FEB 2025 to 20 MAR 2025

ELEV 800	TDZE 796
----------	----------

3000 PHONO VGSi and RNAV glidepath not coincident (VGSi Angle 3.30/TCH 28). 4 NM Holding Pattern



CATEGORY	A	B	C	D
LPV DA	1103-1	307 (400-1)		NA
LNAV/VNAV DA	1189-1½	393 (400-1½)		NA
LNAV MDA	1260-1	464 (500-1)	1260-1¾ 464 (500-1¾)	NA
<b>C</b> CIRCLING	1280-1 480 (500-1)	1360-1 560 (600-1)	1540-2 740 (800-2)	NA

MIRL Rwy 10-28 ①  
REIL Rwy 10 and 28 ①