

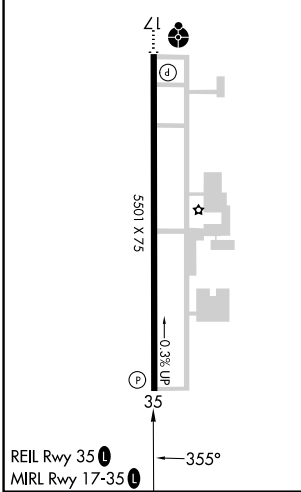
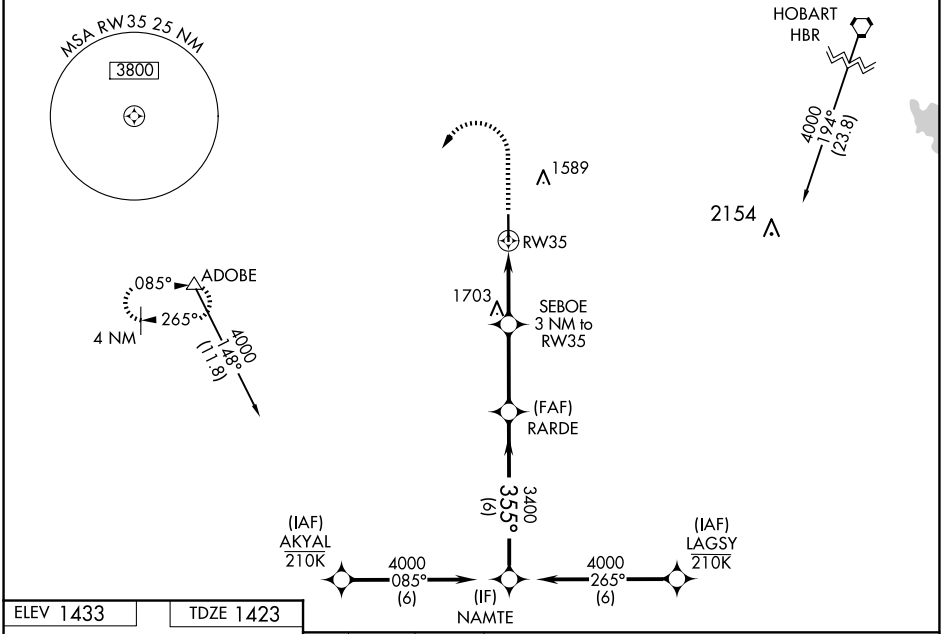
WAAS CH 93914 W35A	APP CRS 355°	Rwy Idg TDZE Apt Elev	5501 1423 1433
--	------------------------	-----------------------------	---

RNAV (GPS) RWY 35

ALTUS/QUARTZ MOUNTAIN RGNL (A.X.S)

RNP APCH.	MISSED APPROACH: Climb to 2100 then climbing left turn to 4000 direct ADOBE and hold.
<p>▽</p> <p>▲ For uncompensated Baro-VNAV systems, LNAV/VNAV NA below -17°C or above 54°C.</p>	

AWOS-3PT 118.825	ALTUS APP CON* 125.1 353.7	UNICOM 122.8 (CTAF) 0
----------------------------	--------------------------------------	---------------------------------



2100 4000 ADOBE VGSI and RNAV glidepath not coincident (VGSI Angle 3.00/TCH 40).

*LNAV only.

NAMTE

RARDE 3400
SEBOE 3 NM to RW35
RW35
2400*
3400
355°
4000

GP 3.00° TCH 40

CATEGORY	A	B	C	D
LPV DA	1673-7/8		250 (300-7/8)	NA
LNAV/VNAV DA	1673-7/8		250 (300-7/8)	NA
LNAV MDA	1960-1	537 (600-1)	1960-1/2 537 (600-1/2)	NA
C CIRCLING	1960-1	527 (600-1)	2020-1/2 587 (600-1/2)	NA

SC-1, 20 FEB 2025 to 20 MAR 2025

SC-1, 20 FEB 2025 to 20 MAR 2025