


| | | | |
|---------------|-------------|----------|-------------|
| LOC/DME I-JLS | APP CRS | Rwy Idg | 5002 |
| 110.3 | 051° | TDZE | 193 |
| | | Apt Elev | 193 |

LOC RWY 5

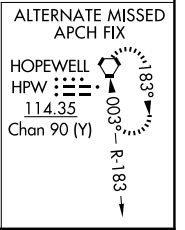
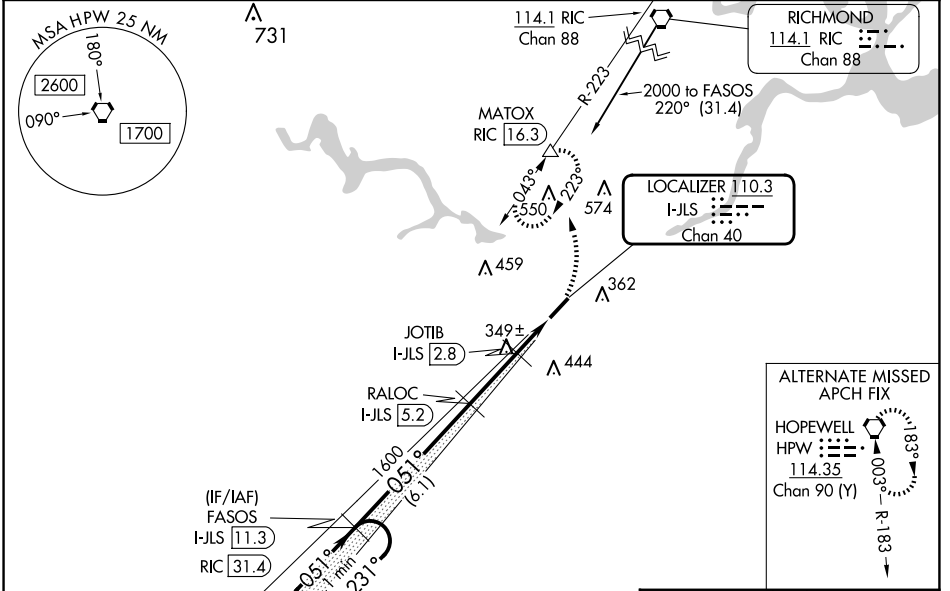
TRI CITIES EXEC/DINWIDDIE COUNTY (PTB)

⚠ **⚠** DME required. Helicopter visibility reduction below 3/4 SM NA. VDP NA when using Richmond Exec/Chesterfield County altimeter setting. When local altimeter setting not received, use Richmond Exec/Chesterfield County altimeter setting and increase all MDA 40 feet; increase S-LOC 5 Cat C visibility 1/8 mile and Circling Cat C visibility 1/4 mile. For inop ODALS, increase S-LOC 5 Cat C visibility to 1 1/8 mile. Inop table does not apply to S-LOC 5 Cat A and B. Inop table does not apply to S-LOC Cat A and B when using Richmond Exec/Chesterfield County altimeter setting.

ODALS  ...

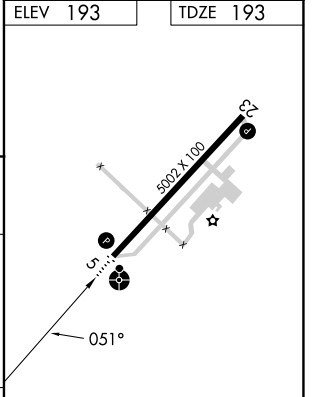
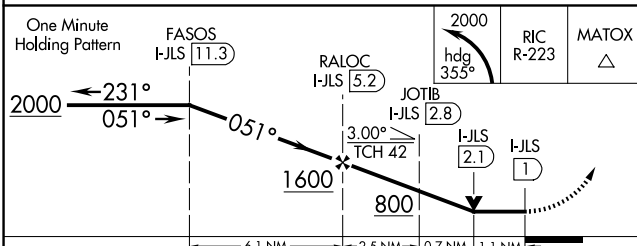
MISSED APPROACH:
Climbing left turn to 2000 on heading 355° and on RIC VORTAC R-223 to MATOX/RIC 16.3 DME and hold.


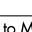
| | | | |
|----------------|---------------------|----------------|-----------------------|
| AWOS-3 | POTOMAC APP CON | GCO | UNICOM |
| 133.325 | 126.75 307.2 | 135.075 | 122.7 (CTAF) 0 |



| | |
|----------|----------|
| ELEV 193 | TDZE 193 |
|----------|----------|

DME REQUIRED



| | | | | | | | | | | | | | | | | | |
|-----------------|-------|-------------|------------------------------|------|--|-------|----|----|-----|-----|-----|---------|------|------|------|------|------|
| CATEGORY | A | B | C | D | MRL Rwy 5-23  | | | | | | | | | | | | |
| S-5 | 600-1 | 407 (500-1) | | NA | REIL Rwy 23  | | | | | | | | | | | | |
| | | | | | FAF to MAP 4.3 NM | | | | | | | | | | | | |
| CIRCLING | 680-1 | 487 (500-1) | 760-1 1/2 567 (600-1 1/2) | NA | <table border="1"> <tr> <td>Knots</td> <td>60</td> <td>90</td> <td>120</td> <td>150</td> <td>180</td> </tr> <tr> <td>Min:Sec</td> <td>4:18</td> <td>2:52</td> <td>2:09</td> <td>1:43</td> <td>1:26</td> </tr> </table> | Knots | 60 | 90 | 120 | 150 | 180 | Min:Sec | 4:18 | 2:52 | 2:09 | 1:43 | 1:26 |
| Knots | 60 | 90 | 120 | 150 | 180 | | | | | | | | | | | | |
| Min:Sec | 4:18 | 2:52 | 2:09 | 1:43 | 1:26 | | | | | | | | | | | | |

LOC RWY 5

NE-3, 20 FEB 2025 to 20 MAR 2025

NE-3, 20 FEB 2025 to 20 MAR 2025