

BLUFFTON, OHIO

AL-5665 (FAA)

22307

VORTAC FBC 108.2 Chan 19	APP CRS 233°	Rwy Idg TDZE 850 Apt Elev 851
--	------------------------	---

VOR RWY 23

BLUFFTON (5G7)

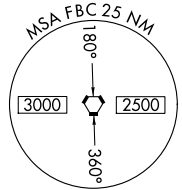
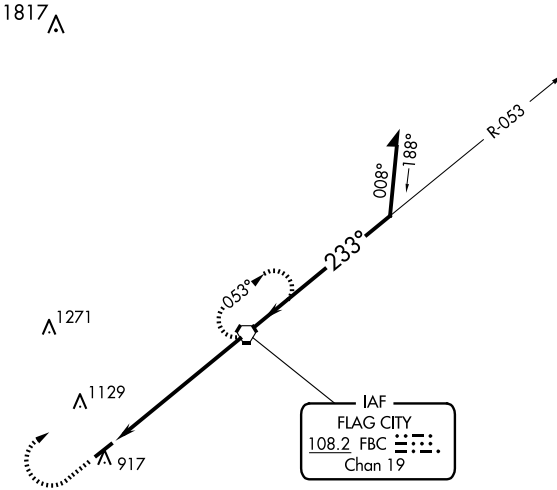
▼ Use Findlay altimeter setting; when not received, use Lima altimeter setting and increase all MDA 20 feet, increase S-23 Cat C 1/8 SM and Circling Cat C/D visibility 1/4 SM.

MISSED APPROACH: Climb to 2500 then right turn direct FBC VORTAC and hold.

FDY ASOS
132.85

TOLEDO APP CON
120.8 317.55

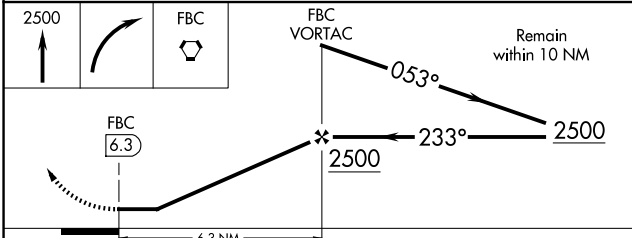
UNICOM
122.8 (CTAF) 0



ELEV 851	TDZE 850
----------	----------

Inset diagram showing the final approach to runway 23 from 6.3 NM out, with a 233° heading and a 053° turn.

REIL Rwys 5 and 23 0
MIRL Rwy 5-23 0
FAF to MAP 6.3 NM
Knots: 60 90 120 150 180
Min:Sec: 6:18 4:12 3:09 2:31 2:06



CATEGORY	A	B	C	D
S-23	1360-1 510 (600-1)	1360-1 510 (600-1 3/8)	1360-1 510 (600-1 3/8)	1360-1 510 (600-1 1/2)
C CIRCLING	1360-1 509 (600-1)	1520-1 669 (700-1)	1520-1 3/4 669 (700-1 3/4)	1520-2 669 (700-2)

BLUFFTON, OHIO
Amdt 7B 26MAR20

40°53'N-83°52'W

BLUFFTON (5G7) VOR RWY 23

EC-2, 20 FEB 2025 to 20 MAR 2025

EC-2, 20 FEB 2025 to 20 MAR 2025