

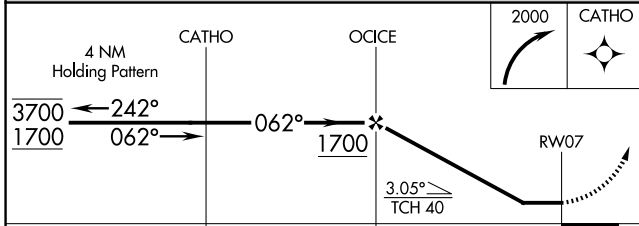
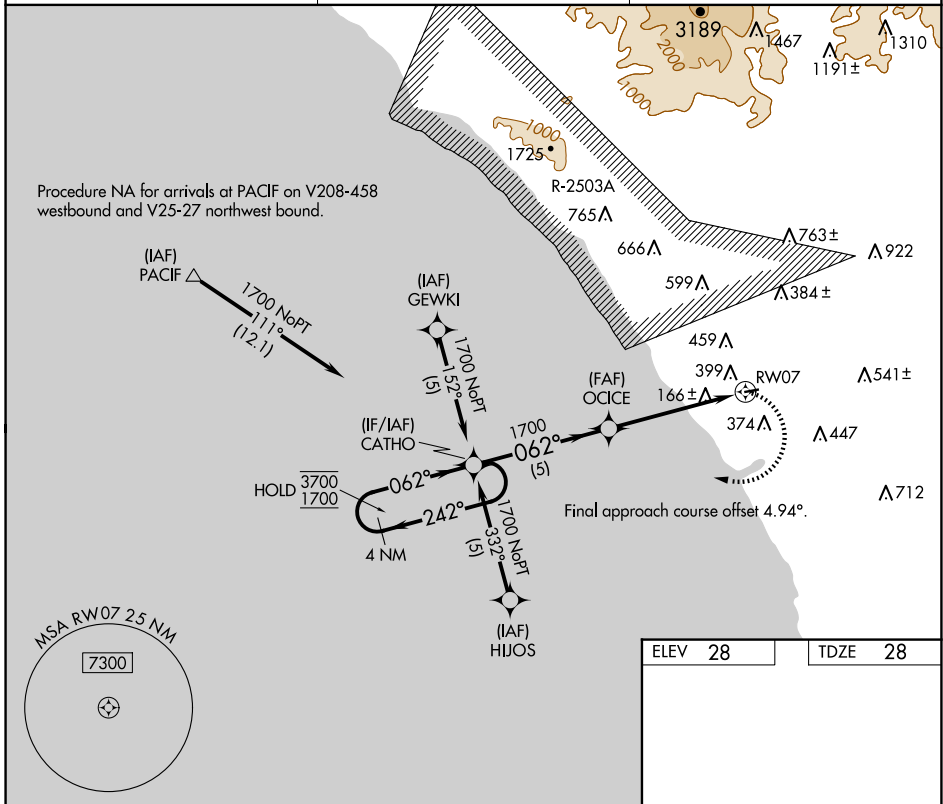
APP CRS	Rwy Idg	<b>2712</b>
<b>062°</b>	TDZE	<b>28</b>
	Apt Elev	<b>28</b>

# RNAV (GPS) RWY 7

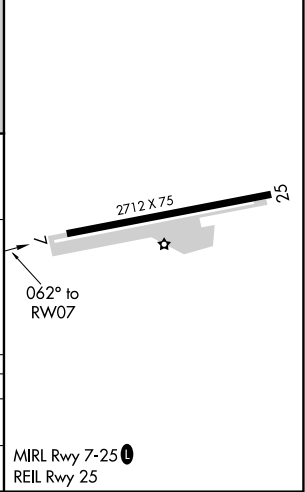
BOB MAXWELL MEML AIRFIELD (OKB)

RNP APCH-GPS.		MISSED APPROACH: Climbing right turn to 2000 direct CATHO and hold.
▼	Rwy 7 helicopter visibility reduction below 1 SM NA.	
▲	NA	Rwy 7 Straight-in and Circling minimums NA at night.

ASOS	SOCAL APP CON	UNICOM
<b>127.8</b>	<b>127.3 323.0</b>	<b>122.725 (CTAF)</b>



ELEV	28	TDZE	28
------	----	------	----



CATEGORY	A	B	C	D
LNVA MDA	660-1	632 (700-1)		NA
CIRCLING	720-1 692 (700-1)	840-1¼ 812 (900-1¼)		NA

SW-3, 20 FEB 2025 to 20 MAR 2025

SW-3, 20 FEB 2025 to 20 MAR 2025