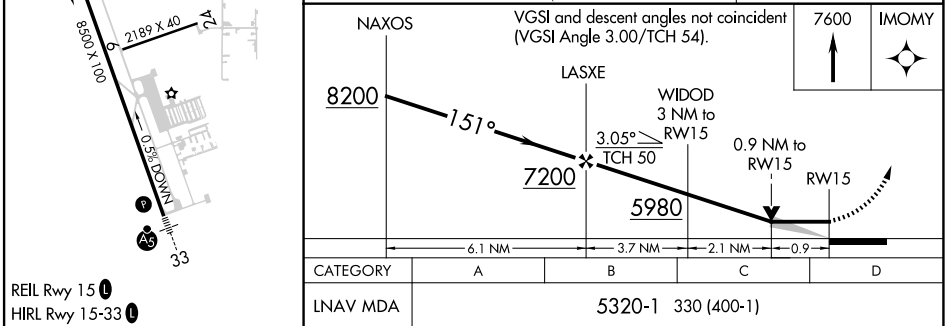
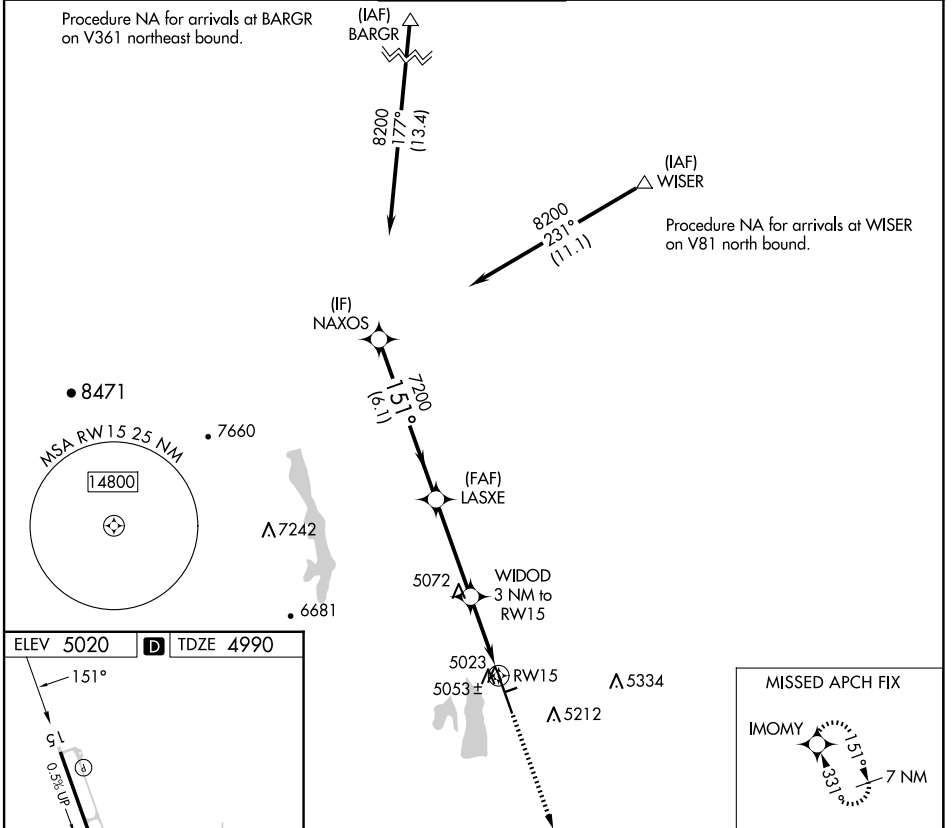


APP CRS 151°	Rwy Idg 8500
	TDZE 4990
	Apt Elev 5020

RNAV (GPS) RWY 15

NORTHERN COLORADO RGNL (FNL)

RNP APCH-GPS.		MISSED APPROACH: Climb to 7600 direct IMOMY and hold.		
ATIS 135.075	DENVER APP CON 134.85 251.125	NOCO TOWER* 118.4 (CTAF) 0	GND CON 121.65	CLNC DEL 120.25 (When twr closed)



SW-1, 20 FEB 2025 to 20 MAR 2025

SW-1, 20 FEB 2025 to 20 MAR 2025