

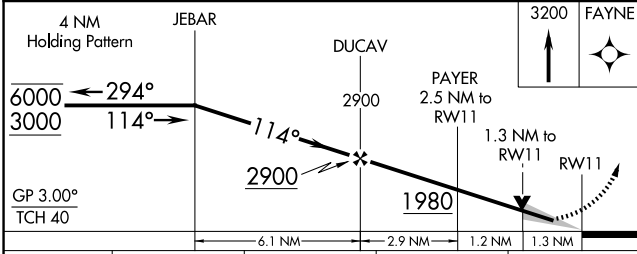
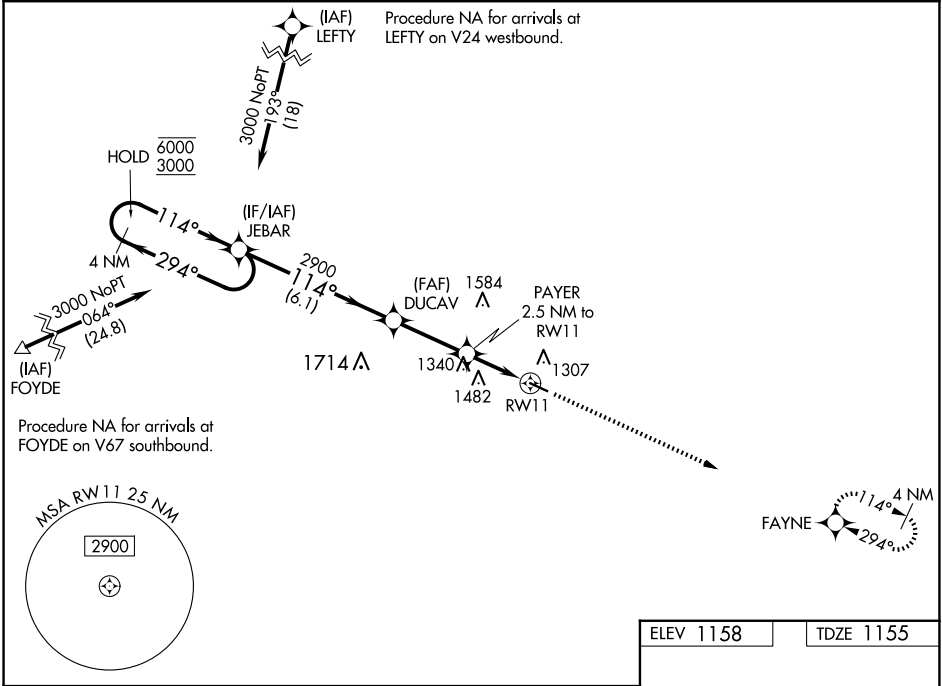
WAAS CH 78021 W11A	APP CRS 114°	Rwy Idg 4001 TDZE 1155 Apt Elev 1158
--	------------------------	---

RNAV (GPS) RWY 11

DECORAH MUNI (DEH)

RNP APCH - GPS.	MISSED APPROACH: Climb to 3200 direct FAYNE and hold.
<p>▼ For uncompensated Baro-VNAV systems, LNAV/VNAV NA below -17°C or above 54°C.</p>	

AWOS-3 120.925	MINNEAPOLIS CENTER 118.85	UNICOM 122.8 (CTAF) 0
--------------------------	-------------------------------------	--



ELEV 1158	TDZE 1155
<p>REIL Rwy 11 and 29 0</p> <p>MIRL Rwy 11-29 0</p>	

CATEGORY	A	B	C	D
LPV DA	1405-1	250 (300-1)		NA
LNAV/VNAV DA	1405-1	250 (300-1)		NA
LNAV MDA	1600-1	445 (500-1)		NA
C CIRCLING	1620-1	462 (500-1)		NA

NC-3, 20 FEB 2025 to 20 MAR 2025

NC-3, 20 FEB 2025 to 20 MAR 2025