

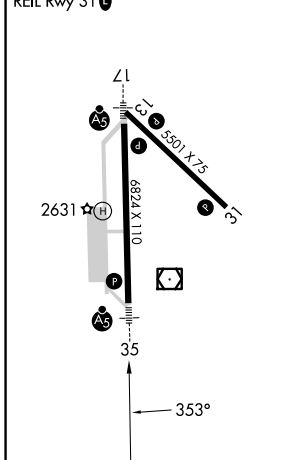
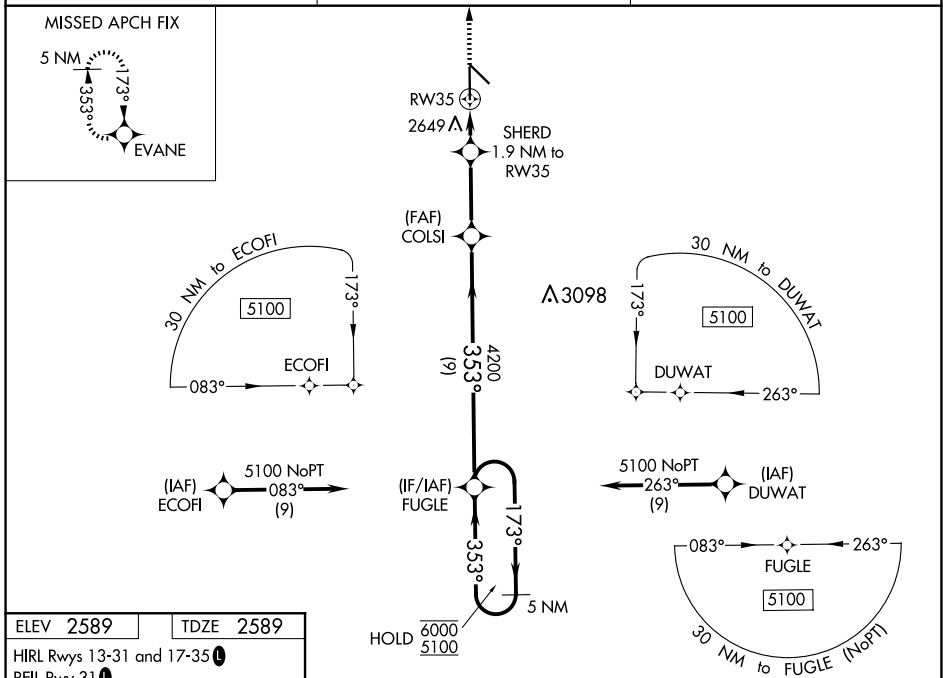
WAAS CH 81917 W35A	APP CRS 353°	Rwy Idg TDZE Apt Elev	6824 2589 2589
--	------------------------	-----------------------------	---

RNAV (GPS) RWY 35

AINSWORTH RGNL (A.NW)

RNP APCH.	MALSR 	MISSED APPROACH: Climb to 5000 direct EVANE and hold.
<p>⚠ For uncompensated Baro-VNAV systems, LNAV/VNAV NA below -20°C or above 54°C. For inop ALS, increase LNAV/VNAV all Cats visibility to 3/4 SM and LNAV Cats C and D visibility to 1 SM.</p>		

AWOS-3 118.325	DENVER CENTER 127.95 338.2	UNICOM 122.8 (CTAF) 1
--------------------------	--------------------------------------	---------------------------------



5000	EVANE	FUGLE		5 NM Holding Pattern
*LNAV only	SHERD 1.9 NM to RW35	COLSI 4200	FUGLE	6000 5100
	1 NM to RW35	3240	4200	GP 3.00° TCH 45
	1 NM	0.9 NM	3 NM	9 NM
CATEGORY	A	B	C	D
LPV DA	2789-1/2		200 (200-1/2)	
LNAV/VNAV DA	2839-1/2		250 (300-1/2)	
LNAV MDA	2960-1/2 371 (400-1/2)		2960-5/8 371 (400-5/8)	
C CIRCLING	3000-1 411 (500-1)	3040-1 451 (500-1)	3040-1 1/2 451 (500-1 1/2)	3200-2 611 (700-2)

NC-2, 20 FEB 2025 to 20 MAR 2025

NC-2, 20 FEB 2025 to 20 MAR 2025