


VOR/DME ANW 112.7 Chan 74	APP CRS 008°	Rwy Idg TDZE Apt Elev	6824 2589 2589
--	------------------------	-----------------------------	---

VOR RWY 35

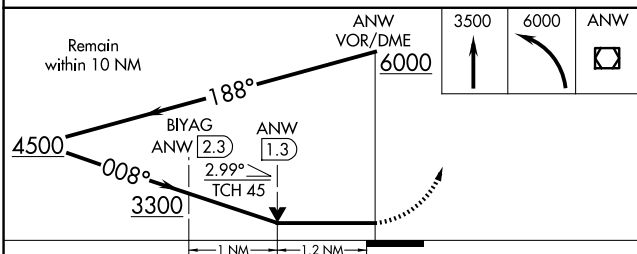
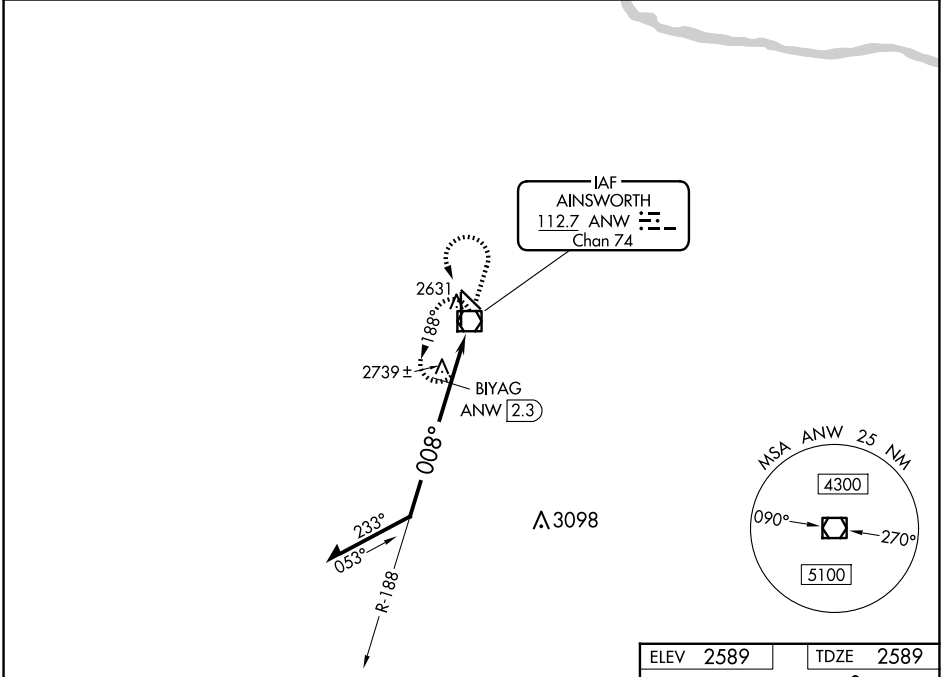
AINSWORTH RGNL (A.N.W)

⚠ When local altimeter setting not received, procedure NA.
⚠ For inoperative ALS, increase BIYAG fix minimums S-35 Cat D visibility to 1¼.



MALSR 

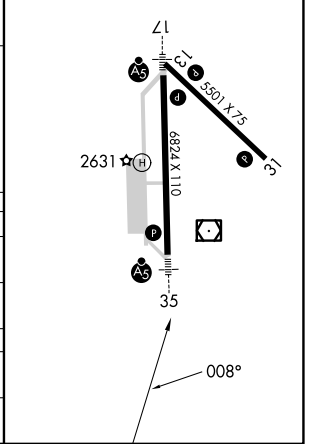
MISSED APPROACH: Climb to 3500 then climbing left turn to 6000 direct ANW VOR/DME and hold.



AWOS-3 118.325	DENVER CENTER 127.95 338.2	UNICOM 122.8 (CTAF) 
--------------------------	--------------------------------------	---



ELEV 2589	TDZE 2589
-----------	-----------

HIRL Rwy 13-31 and 17-35 
 REIL Rwy 31 



CATEGORY	A	B	C	D
S-35	3300-½ 711 (800-½)		3300-1½ 711 (800-1½)	3300-1¾ 711 (800-1¾)
 CIRCLING	3300-1 711 (800-1)		3300-2 711 (800-2)	3300-2¼ 711 (800-2¼)
BIYAG FIX MINIMUMS (DME REQUIRED)				
S-35	3000-½ 411 (500-½)		3000-¾ 411 (500-¾)	3000-1 411 (500-1)
 CIRCLING	3000-1 411 (500-1)	3040-1 451 (500-1)	3040-1½ 451 (500-1½)	3200-2 611 (700-2)

NC-2, 20 FEB 2025 to 20 MAR 2025

NC-2, 20 FEB 2025 to 20 MAR 2025