


LOC/DME I-SVH 111.75 Chan 54 (Y)	APP CRS 285°	Rwy Idg 6453 TDZE 967 Apt Elev 968
------------------------------------------------------	------------------------	---------------------------------------------------------------

ILS Y or LOC Y RWY 28

STATESVILLE RGNL (SVH)

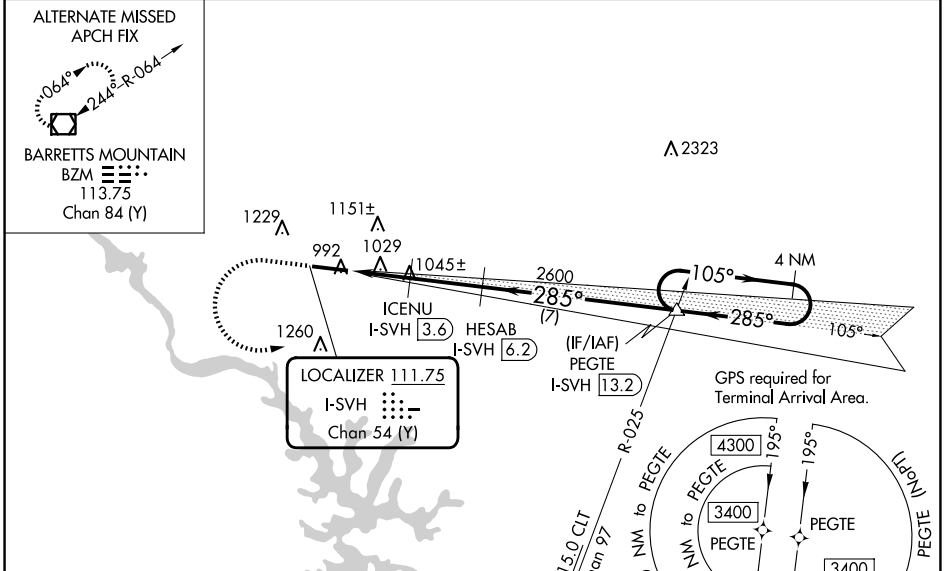
DME required.

▼ When local altimeter setting not received, use Lincolnton altimeter setting and increase ILS DA to 1219 and all MDA 60 feet; increase S-LOC 28 Cats C/D visibility 1/8 mile and Circling Cat C visibility 1/4 mile. VDP NA when using Lincolnton altimeter setting. For inop MALSRR when using Lincolnton altimeter setting, increase S-ILS 28 all Cats visibility to 7/8 mile and S-LOC 28 Cats C/D visibility to 1 mile.

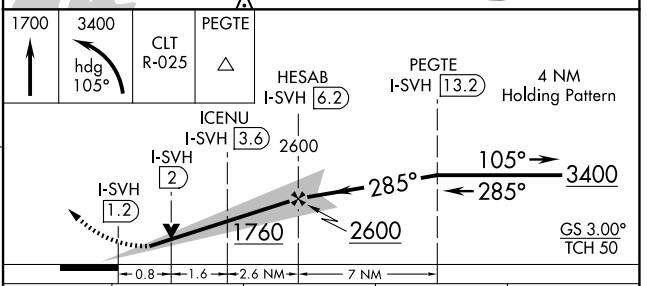
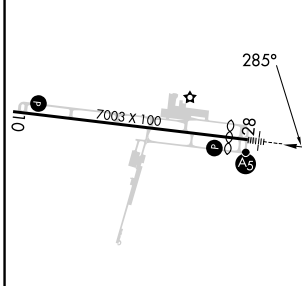
MALSRR 

MISSED APPROACH: Climb to 1700 then climbing left turn to 3400 on heading 105° and on CLT VOR/DME R-025 to PEGTE INT/I-SVH 13.2 DME and hold.

AWOS-3 119.225	ATLANTA CENTER 125.15 263.0	UNICOM 123.075 (CTAF) 0
--------------------------	---------------------------------------	-----------------------------------



ELEV 968	D	TDZE 967
----------	----------	----------



CATEGORY	A	B	C	D
S-ILS 28	1167-1/2		200 (200-1/2)	
S-LOC 28	1280-1/2		313 (400-1/2)	
C CIRCLING	1420-1 452 (500-1)	1540-1 572 (600-1)	1540-1 1/2 572 (600-1 1/2)	1560-2 592 (600-2)

SE-2, 20 FEB 2025 to 20 MAR 2025

SE-2, 20 FEB 2025 to 20 MAR 2025