

CHIEF NINE DEPARTURE

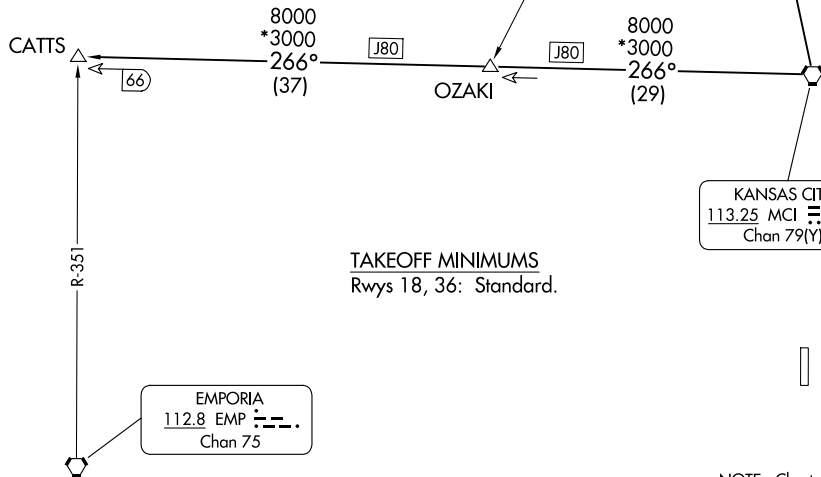
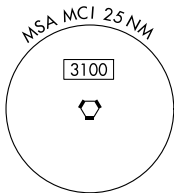
AL-5687 (FAA)

JOHNSON COUNTY EXEC (OJC)
OLATHE, KANSAS

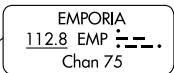
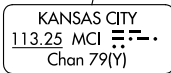
**TOP ALTITUDE:
10000**

RADAR required.

KANSAS CITY DEP CON
118.9 251.075
ATIS
119.35



TAKEOFF MINIMUMS
Rwys 18, 36: Standard.



NOTE: Chart not to scale.

DEPARTURE ROUTE DESCRIPTION

TAKEOFF ALL RUNWAYS: Climb on assigned heading for RADAR vectors to appropriate route. Maintain 10000 or as assigned by ATC, expect filed altitude 10 minutes after departure.

CATTs TRANSITION (CHIEF9.CATTs): From over MCI VORTAC on MCI R-266 to CATTs.

ST. JOSEPH TRANSITION (CHIEF9.STJ): From over MCI VORTAC on MCI R-343 and STJ R-160 to STJ VORTAC.

CHIEF NINE DEPARTURE

NC-2, 20 FEB 2025 to 20 MAR 2025

NC-2, 20 FEB 2025 to 20 MAR 2025