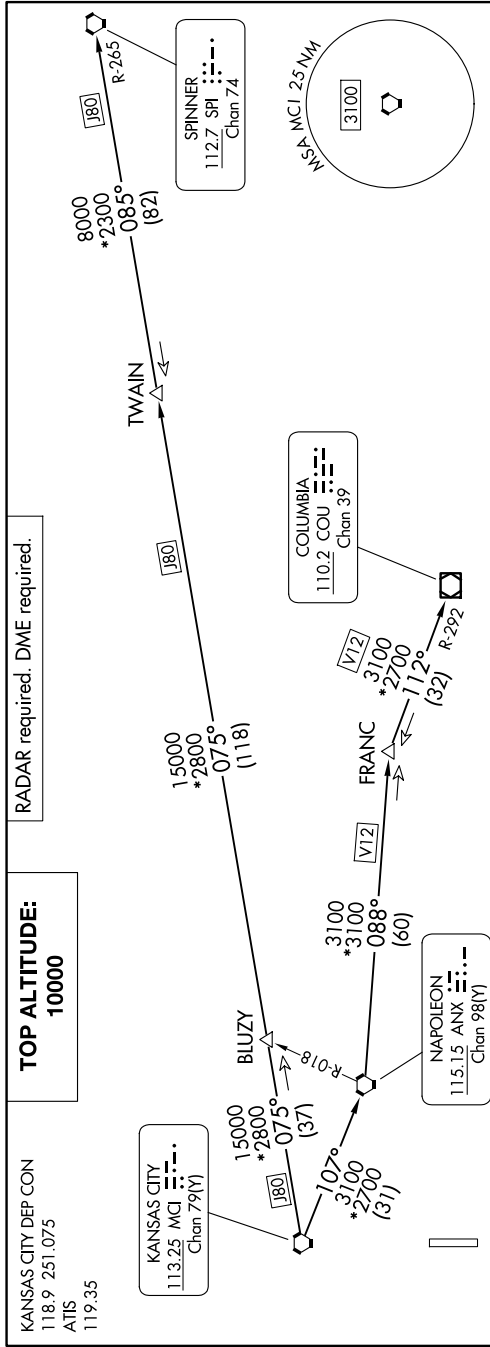


# LAKES FIVE DEPARTURE

AL-5687 (FAA)

NC-2, 20 FEB 2025 to 20 MAR 2025



**TOP ALTITUDE:**  
10000

KANSAS CITY DEP CON  
118.9 251.075  
ATIS  
119.35

# LAKES FIVE DEPARTURE

(LAKES5.MCI) 05OCT23

## DEPARTURE ROUTE DESCRIPTION

**TAKEOFF ALL RUNWAYS:** Climb on assigned heading for RADAR vectors to appropriate route. Maintain 10000 or as assigned by ATC. Expect filed altitude 10 minutes after departure.

**COLUMBIA TRANSITION [LAKES5.COJ]:** From over MCI VORTAC on MCI R-107 to ANX VORTAC, then on ANX R-088 and COU R-292 to COU VOR/DME.

**FRANC TRANSITION [LAKES5.FRANC]:** From over MCI VORTAC on MCI R-107 to ANX VORTAC, then on ANX R-088 to FRANC.

**SPINNER TRANSITION [LAKES5.SPI]:** From over MCI VORTAC on MCI R-075 and SPI R-265 to TWAIN, then on SPI R-265 to SPI VORTAC.

**TWAIN TRANSITION [LAKES5.TWAIN]:** From over MCI VORTAC on MCI R-075 and SPI R-265 to TWAIN.

**TAKEOFF MINIMUMS**  
Rwys 18, 36: Standard.

NOTE: Chart not to scale.

NC-2, 20 FEB 2025 to 20 MAR 2025