

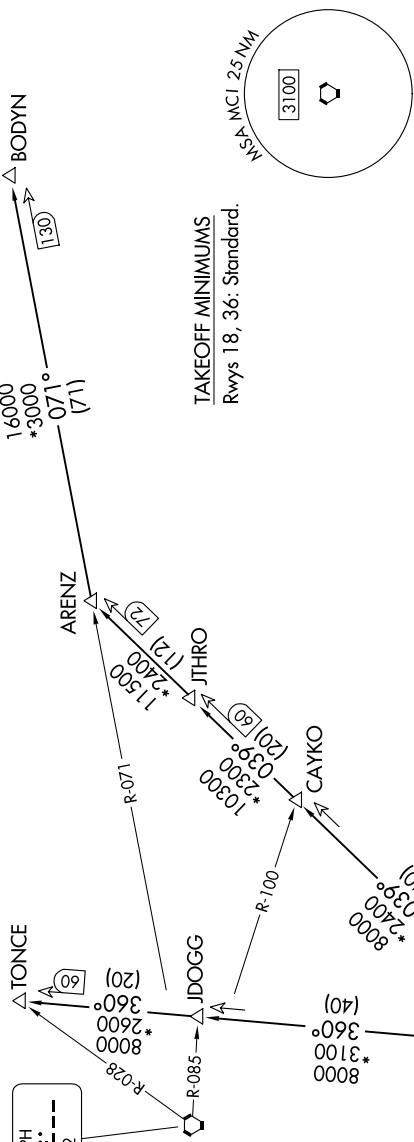
# ROYAL TWO DEPARTURE

NC-2, 20 FEB 2025 to 20 MAR 2025

**TOP ALTITUDE:  
10000**

RADAR and DME required.

KANSAS CITY DEP CON  
118.9 251.075  
ATIS  
119.35



### DEPARTURE ROUTE DESCRIPTION

**TAKEOFF ALL RUNWAYS:** Climb on assigned heading for RADAR vectors to appropriate route. Maintain 10000, expect filed altitude 10 minutes after departure.

**ARENZ TRANSITION (ROYAL2.ARENZ):** From over MCI VORTAC on MCI R-039 to ARENZ.

**BODYN TRANSITION (ROYAL2.BODYN):** From over MCI VORTAC on MCI R-039 to ARENZ, then on STJ R-071 to BODYN.

**TONCE TRANSITION (ROYAL2.TONCE):** From over MCI VORTAC on MCI R-360 to TONCE.

NOTE: Chart not to scale.

NC-2, 20 FEB 2025 to 20 MAR 2025